

1 Who Should Participate?

Individuals involved in:

- Procurement and purchasing
- Supply chain and operations
- Sustainability / ESG functions
- Organisational or project decision-making



2 Why Should You Participate?

- Highlight key challenges and industry needs
- Support the development of practical, industry-relevant strategies
- Strengthen responsible sourcing and ESG integration across supply chains
- Contribute to shaping sustainable procurement practices in Malaysia



3 Survey Details

- 10–15 minutes
- 27 questions across key areas of procurement, supply chain, and sustainability



Deadline:
8 May 2026



MALAYSIA SUSTAINABLE PROCUREMENT SURVEY 2026

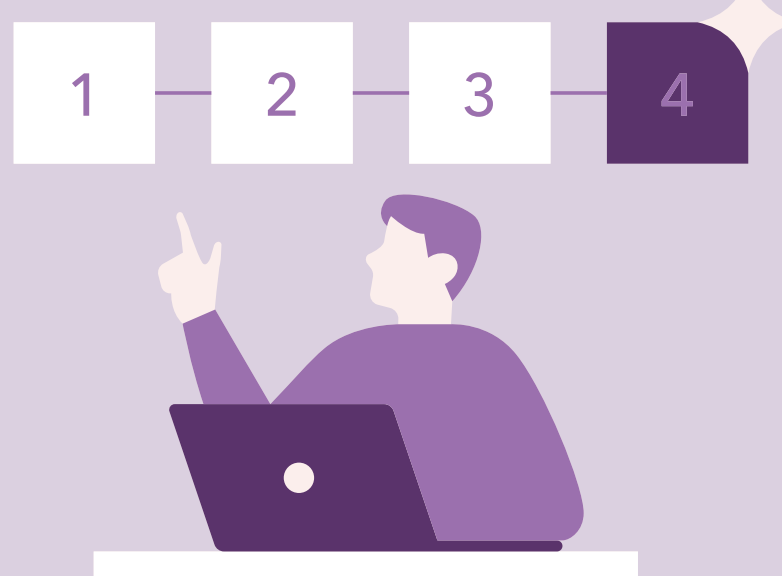
The Malaysian Timber Certification Council (MTCC) is conducting a national survey to better understand current practices, challenges, and priorities in sustainable procurement across organisations in Malaysia.

4 How to Participate?

Take the survey via the Google form link below:

<https://forms.gle/BGCXusoCZNko8L367>

Alternatively, access the Google form by scanning the QR code



5 Have an Enquiry?

Contact

Mr. Muhammad Hasif Azizan /
Ms. Prahashini Galadaran at

comm@mtcc.com.my
[+603-2161 2293](tel:+603-21612293)

Follow MTCC for more updates:

- Website: www.mtcc.com.my
- Facebook: <https://www.facebook.com/MTCC.Malaysia/>
- Instagram: https://www.instagram.com/mtcc_my/
- TikTok: <https://www.tiktok.com/@mtccwoodtok>
- WhatsApp Channel: [Click to join](#)