



# 2013

MALAYSIAN TIMBER CERTIFICATION COUNCIL

---

# CONTENTS

---

	Page
VISION AND MISSION	2
CORPORATE PROFILE	2
BOARD OF TRUSTEES	3
ANNUAL GENERAL MEETING	5
ORGANISATION STRUCTURE	6
CHAIRMAN'S STATEMENT	8
REVIEW OF OPERATIONS	11
OPERATIONS	14
EXPORT OF TIMBER PRODUCTS CERTIFIED UNDER MTCS	18
CERTIFICATION STANDARDS	20
TRAINING	24
PROMOTION	28
RECOGNITION OF MTCS	35
PEFC FOREST CERTIFICATION WEEK	38
COOPERATION	44
OTHER ACTIVITIES	46
SIGNIFICANT EVENTS	48
FINANCIAL STATEMENTS	56
APPENDIX I	58

## Vision

To be recognised as the leading timber certification organisation for tropical forests

## Mission

To establish and operate a credible and internationally recognised national timber certification scheme towards promoting sustainable forest management in Malaysia

## Corporate Profile

The Malaysian Timber Certification Council (MTCC) is an independent organisation established in October 1998 to develop and operate the voluntary Malaysian Timber Certification Scheme (MTCS). Incorporated under the Companies Act 1965 as a company limited by guarantee, MTCC is governed by a Board of Trustees and started its operation in January 1999.

MTCC is the national governing body (NGB) which has overall responsibility for the MTCS. MTCC's main activities are to:

- support the standard-setting process by serving as the secretariat to the appropriate standard setting body in formulating standards related to timber certification and keeping them under review periodically
- process applications for MTCS notification of certification bodies (CBs) operating forest management system and/or chain of custody certification and issuance of logo usage licences to certificate holders
- implement a procedure for the investigation and resolution of disputes, complaints and appeals related to its role as the NGB
- liaise closely with the national accreditation body and other certification organisations in matters related to timber certification
- coordinate with national, regional and international bodies related to timber certification to facilitate cooperation and mutual recognition arrangements
- conduct programmes to promote and publicise the MTCS, both locally and internationally

## BOARD OF TRUSTEES

The Board of Trustees, comprising the Chairman and ten other members, is the governing body which decides the overall policies and direction in carrying out MTCC's activities. The members comprise of representatives from the academic and research institutions, timber industry, social and environmental non-governmental organisations (NGOs) and government agencies.

### Chairman

Dato' Dr. Freezailah Che Yeom

### Trustees

• M. Nagarajan	Ministry of Plantation Industries and Commodities
• Wan Hasmah Wan Mohd	Ministry of Natural Resources and Environment
• Emeritus Prof. Dato' Dr. Abdul Latiff Mohamad	Universiti Kebangsaan Malaysia ( <i>up to 19 July</i> )
• Dr. Liew Kang Chiang	Universiti Malaysia Sabah ( <i>w.e.f. 20 July</i> )
• Prof. Dr. Mohd Hamami Sahri	Universiti Putra Malaysia ( <i>up to 19 July</i> )
• Dr. Rasmina Halis	Universiti Putra Malaysia ( <i>w.e.f. 20 July</i> )
• Datuk James Hwong	Sabah Timber Industries Association
• Ng Kay Yip	Malaysian Wood Industries Association ( <i>up to 19 July</i> )
• Ho Khoy Lim	Malaysian Panel-Product Manufacturers' Association ( <i>w.e.f. 20 July</i> )
• Dr. Banabas Tapin	Kadazandusun Cultural Association
• Dr. Melvin Gumal	Wildlife Conservation Society, Malaysia Program
• Elbson Marajan Pengeran	Sarawak Dayak National Union ( <i>up to 19 July</i> )
• Gerawat Gala	Federation of Orang Ulu Associations, Sarawak, Malaysia ( <i>w.e.f. 20 July</i> )
• Mohd. Khalid Atan	Timber Employees Union Peninsular Malaysia

The Board of Trustees met four times as follows:

- Fifty-Fourth Meeting      11 March      Kuala Lumpur
- Fifty-Fifth Meeting      6 June      Kuching
- Fifty-Sixth Meeting      21 October      Kuala Lumpur
- Fifty-Seventh Meeting      16 December      Kuala Lumpur



*Fifty-Fourth Meeting*



*Fifty-Fifth Meeting*



*Fifty-Sixth Meeting*



*Fifty-Seventh Meeting*

## BOARD OF TRUSTEES



**Seated (left to right)** : Dr. Rasmina Halis, Dato' Dr. Freezailah Che Yeom, Wan Hasmah Wan Mohd

**Standing (left to right)** : Ho Khoy Lim, Dr. Melvin Gumal, Dr. Liew Kang Chiang, M. Nagarajan, Datuk James Hwong, Gerawat Gala, Dr. Banabas Tapin

**Not in picture** : Mohd. Khalid Atan





## Investment Committee

The Investment Committee oversees the overall implementation of MTCC's investment policy, particularly in the management of the Endowment Fund. The Committee is also responsible for the formulation of policies and procedures on matters related to the establishment and management of the Endowment Fund.

### *Members of the Investment Committee*

Dato' Dr. Freezailah Che Yeom (Chairman)

M. Nagarajan – Ministry of Plantation Industries and Commodities

Mustafar Taib – Ministry of Finance

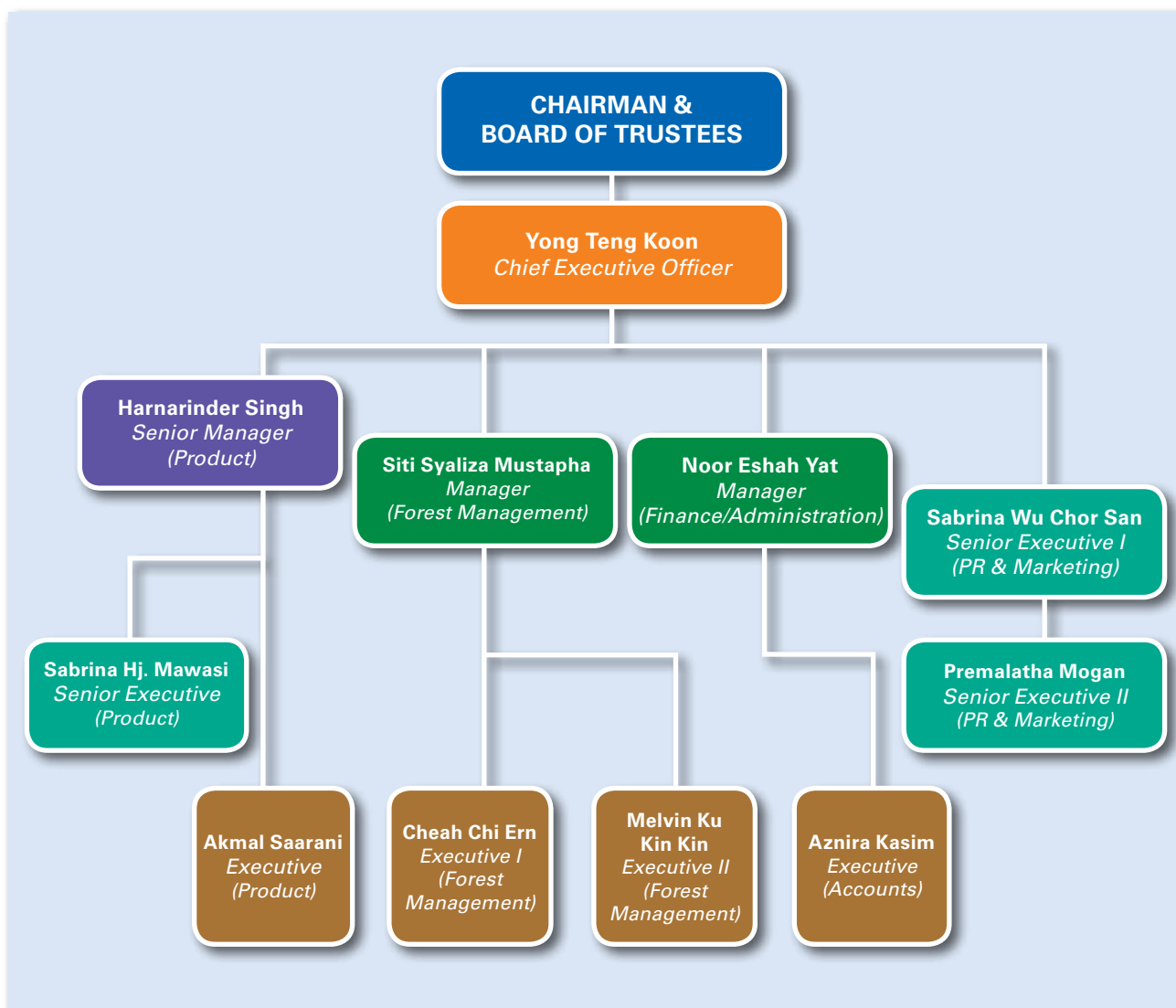
Yong Teng Koon – Chief Executive Officer

## ANNUAL GENERAL MEETING



**T**he Fourteenth Annual General Meeting was held on 27 June in Kuala Lumpur during which the Audited Accounts for the Financial Year ended 31 December 2012, Reports of the Trustees and Auditors, and the Annual Report for the Year 2012, were tabled and adopted by the Members.

## ORGANISATION STRUCTURE



### Management Team and Supporting Staff



**Seated (left to right):**

Premalatha Mogan,  
Siti Syaliza Mustapha,  
Harnarinder Singh, Yong  
Teng Koon, Noor Eshah Yat,  
Sabrina Wu, Sabrina Mawasi

**Standing (left to right):**

Rasyidah Abdul Rahman,  
Norashida Md. Zin, Melvin  
Ku, Ahmad Muzhaffar Razali,  
Cheah Chi Ern, Aznira Kasim,  
Akmal Saarani, Nur Ashykin  
Ab. Shukor

**Not in picture:**

Mohamad Fadzli Abd Ghani

## ORGANISATION STRUCTURE

**Notification Committee**

The Notification Committee considers and approves the notification of certification bodies (CBs) and issuance of logo usage licences to certificate holders under the MTCS. The Notification Committee met eleven times as follows:

Forty-Fifth Meeting – 23 January	Fifty-First Meeting – 29 August
Forty-Sixth Meeting – 28 February	Fifty-Second Meeting – 6 September
Forty-Seventh Meeting – 22 March	Fifty-Third Meeting – 20 September
Forty-Eighth Meeting – 17 May	Fifty-Fourth Meeting – 29 October
Forty-Ninth Meeting – 12 June	Fifty-Fifth Meeting – 13 December
Fiftieth Meeting – 28 June	

*Members of the Notification Committee*

Yong Teng Koon (Chairman)

Harnarinder Singh

Siti Syaliza Mustapha

**In-House Investment Committee**

The In-House Investment Committee monitors the implementation of the decisions of the Investment Committee, as well as formulates investment recommendations for the consideration of the Investment Committee.

*Members of the In-House Investment Committee*

Yong Teng Koon (Chairman)

Harnarinder Singh

Siti Syaliza Mustapha

Noor Eshah Yat (Secretary)

Company Secretary	Company Auditors
<p>Zainal Abidin Pit (MAICSA 7014057)</p> <p>ZAP Management Services Sdn. Bhd.</p> <p>15B, 2<sup>nd</sup> Floor, Jalan Tengku Ampuan Zabedah F9/F</p> <p>40100 Shah Alam, Selangor</p>	<p>Mazars (No. AF: 1954)</p> <p>Wisma Selangor Dredging</p> <p>7<sup>th</sup> Floor, South Block, 142-A, Jalan Ampang</p> <p>50450 Kuala Lumpur</p>





## CHAIRMAN'S STATEMENT

It is with much pleasure that I present MTCC's Annual Report for 2013 highlighting its operational activities, milestones and related developments. The year had been busy and eventful for the organisation. And so was the world of timber certification for sustainability and verification for timber legality, with numerous initiatives, conferences and meetings worldwide. But let me begin this statement from the home front. The year saw the retirement of Emeritus Professor Dato' Dr. Abdul Latiff Mohamad, Professor Dr. Mohd. Hamami Sahri, Mr. Ng Kay Yip and Mr. Elbson Marajan from MTCC's Board of Trustees on 19 July. Members of MTCC's Board of Trustees are eminent and busy people representing various stakeholder interests, academia, research institutions and relevant government ministries, yet they have found time to contribute to the organisation's growth and development into a respected world body on tropical timber certification. Members of MTCC's Board of Trustees, past and present, have provided and continue to sustain the organisation with policy directions, ideas and networking so that the organisation remains relevant, effective, efficient and pragmatic. MTCC's Board of Trustees, is so to speak, its "green compass" in providing its policy direction and

## CHAIRMAN'S STATEMENT

strike a judicious balance between stakeholder concerns and make progress to strengthen both MTCC's standards and implementation of certification. To all of them I pay a special tribute for their contributions, without which MTCC would not be where it is today.

MTCC is proud to be entrusted with the organisation of the PEFC Forest Certification Week which it successfully co-hosted with PEFC in Kuala Lumpur from 11-15 November 2013. This was the first such event to be held in a tropical country. The main event of the Week was the 18<sup>th</sup> PEFC General Assembly (GA) which was officiated by YB Datuk Amar Douglas Uggah Embas, Minister of Plantation Industries and Commodities. The GA was attended by more than 100 PEFC members comprising PEFC Board members, national governing bodies, international and extraordinary members, invited guests and media representatives, both local and international. In his address, Chairman of PEFC International, Mr. William Street Jr. noted that with more than 300,000 workers in the forestry sector in Malaysia, the social dimensions of sustainability are critically important. The MTCS is the first forest certification system that integrated social requirements in its chain of custody certification, protecting workers' rights. He also expressed that PEFC is looking forward to work with Malaysia and its members in China and Indonesia and other stakeholders in the region. The PEFC GA was followed by a two-day Stakeholder Dialogue which was held on 14-15 November. The Week ended with a field tour to a certified forest area and an overnight stay at the National Park. This event put Malaysia and the role of MTCC on the world map of forest certification. It was a resounding success thanks to the hard work of the small MTCC secretariat under the leadership of its Chief Executive Officer, Mr. Yong Teng Koon, now in his initial year to helm the organisation. I am proud of their exemplary work and dedication.

The extent and state of the world's forests have now become a serious problem of global concern due to the alarming loss of forest cover resulting from deforestation, degradation, illegal logging, lack of management and conversion into other forms of land uses. And the world's population now stands at 7 billion. All these have adverse impacts on the environment, soil and water resources,

wildlife habitats, biodiversity and forest-dependent communities, which are increasingly severe and now, seriously felt. This situation may be put into perspective in the context of the extent and state of the world's forest situation. During the pre-industrial era, when humankind caused little or no disturbance to forests and forest resources, the world's forested area is estimated at some 6 billion hectares. It has now declined to about 4 billion hectares more or less equally distributed between tropical and non-tropical forests. Out of this total only 395 million hectares or 9 per cent of the world's forests, have been certified for sustainability.

If the world's forest situation is dire, tropical forests are even more so according to a report released by the International Tropical Timber Organisation in 2011. In the survey conducted in its 33 producer member countries with a total forest area of about 1.4 billion hectares, only 30.6 million hectares were reported to be under management out of which 17 million hectares have been certified for sustainability. The latest report indicated that this area has now increased to 23.4 million hectares. Malaysia has Permanent Reserved Forests (PRF) totaling 14.5 million hectares which are under sustainable forest management. To date almost 5 million hectares of the PRF have been certified mainly under the MTCS (PEFC endorsed scheme). The certified PRF area is almost 35 per cent of its total and is thus a major component of the world's tropical forests which have been certified for sustainability. This is indeed a tribute to the dedication and professionalism of our forest managers in Malaysia, the support and cooperation of all stakeholders and the awareness of the general public on the role and importance of forests. And I am also most heartened that our forest managers are doing their utmost to improve forest management of the non-certified PRF so that they will attain the level of sustainability to achieve certification.

Certification, however, is confined only to PRF which are under sustainable management. Timber harvesting also takes place in non-PRF such as state land forests and alienated land. Timber production from such areas therefore needs to be verified for legality to meet the requirements of the US Lacey Act, the EU Timber Regulation (EUTR) and similar legislation by Australia

which will enter into force in November of 2014. All these initiatives are to combat illegal logging and the trade in illegal timber. As a responsible member of the international community, Malaysia is supportive of such initiatives and is in negotiations with the EU to conclude the Forest Law Enforcement Governance and Trade Voluntary Partnership Agreement (FLEGT VPA) to ensure the legality of all our timber products exported to the EU countries. The FLEGT VPA among others, provides for the development and implementation of a Timber Legality Assurance System (TLAS) which will be independently audited to ensure compliance with all relevant Malaysian laws and legislation in the forestry and timber sectors. Substantial progress has been made in the negotiations to conclude the FLEGT VPA which will enable Malaysia's timber exports to be FLEGT licensed and enter EU markets through a "green lane". Pending conclusion and signing of the FLEGT VPA, Peninsular Malaysia is implementing the TLAS and issuing "MYTLAS Licenses" for the timber exported to the EU countries since 1 February 2013 to meet the Due Diligence requirements of the EUTR which come into force on 3 March 2013. Based on its experience, MTCC is providing support in the negotiations led by the Ministry of Plantation Industries and Commodities especially in the development and implementation of the TLAS which has many parallels with forest certification.

The world of forest and timber certification is evolving and ever-changing with new ideas, dimensions, developments, emerging issues, market requirements and public procurement policies especially in environmentally sensitive markets and countries. MTCC must be alert to such developments and requirements. At the same time MTCC must also be a voice for tropical forestry and certification regarding challenges, constraints and the need for greater awareness and better understanding by everyone. MTCC looks forward to work closely with forest managers and all stakeholders in Malaysia in addition to other relevant bodies such as those responsible for public procurement policies in major markets. At the ASEAN and regional level, MTCC will do its utmost to render cooperation to promote timber certification based on its experience and resources.



**DATO' DR. FREEZAILAH CHE YEOM**  
Chairman  
2 July 2014



## REVIEW OF OPERATIONS

The year 2013 marked a new milestone in the history of MTCC. The year saw the change of leadership with the retirement of Mr Chew Lye Teng, the founding CEO at the end of 2012, after an illustrious career of 14 years. I therefore count it a great privilege to have been entrusted with the responsibility to lead the Council beginning 1 January 2013.

The highlights of the year were the successful conduct of two international events co-organised and hosted by MTCC in Malaysia. As the lead agency, MTCC with the cooperation of the Ministry of Plantation Industries and Commodities hosted the *Twelfth Meeting of the Working Group on a Pan ASEAN Timber Certification Initiative* in Kuala Terengganu in July. The Meeting which included a field visit to MTCS-certified forest areas and a MTCS-certified timber company in Terengganu was attended by participants from the ASEAN Member States. MTCC also co-hosted the inaugural *PEFC Forest Certification Week* together with the PEFC International in Kuala Lumpur in November during which the PEFC Board Meeting, General Assembly and Stakeholder Dialogue were held. In fact, the Stakeholder Dialogue attracted a record number of participants exceeding 300 from more than 49 countries. It was regarded as the best Stakeholder Dialogue ever organised by the PEFC. Besides being able to showcase Malaysia as a leader in sustainable forest management

(SFM) in the tropics, it is reassuring that the holding of the Forest Certification Week has generated a greater appreciation of the efforts taken by Malaysia in tropical forest management, and helped build better rapport and understanding among the PEFC family members.

A number of key activities related to the MTCS were conducted in 2013, the most notable ones being the start of the review process for the MC&I(Forest Plantations) standard in January and the assessment of the MTCS for re-endorsement by the PEFC Council in August. For the review of the forest plantation standard, MTCC facilitated the process by conducting the First Public Comment on the standard, establishing a 15-member Standards Review Committee (SRC) and hosting its first meeting to deliberate on the comments received which resulted in the formulation of the Enquiry Draft 1 of the revised standard. As for the assessment of the MTCS for PEFC re-endorsement, an Interim Draft Report on the assessment was prepared and submitted by the PEFC Council appointed consultant to MTCC in December.

In 2013, one new FMU was certified against the requirements of the MC&I(Natural Forest), bringing the total number of FMUs certified to 10 and the total area of the PEFC-certified forests in Malaysia to 4,649,913 ha. The Anap Muput FMU which was granted certification by SIRIM QAS International Sdn. Bhd. in May became the first FMU in Sarawak to be PEFC-certified under the MTCS.

As a capacity building exercise for new auditors, MTCC conducted a combined auditor training course on the two standards used for forest management certification under the MTCS, i.e. MC&I(Natural Forest) and MC&I(Forest Plantations) in December in Sungai Petani, Kedah. The aim was to familiarize the 22 auditors who attended the course on the requirements of the standards, as well as the assessment procedures for conducting audit for certification of natural forest and forest plantation management. In addition, a total of five briefings on the revised PEFC CoC standard were conducted throughout the country in November and December.

With regard to CoC certification, 99 new PEFC CoC certificates were issued, two certificates issued by overseas PEFC-notified CBs were transferred to MTCC's administration, and 12 certificates were withdrawn in 2013. The increase in new certificates earned MTCC the *Certificate of Appreciation* award for being the NGB with the second highest increase in CoC certification, which was handed to MTCC at the PEFC General Assembly in Kuala Lumpur. In addition, 33 Logo Usage Licences were issued to the qualified CoC certificate holders.

The export volume of timber products certified under the MTCS showed an increase of 47% from 112,098 m<sup>3</sup> in 2012 to 164,612 m<sup>3</sup> in 2013, of which 107,006 m<sup>3</sup> (65%) were PEFC-certified. The United Kingdom was the biggest market for PEFC-certified products, accounting for 26% of the total export which was followed by The Netherlands at 16%. India, Iraq, Lebanon, Libya and Sudan became the latest destinations for certified timber products from Malaysia, adding to the existing list of 33 countries.

Activities to promote and publicise the MTCS as a PEFC-endorsed scheme were continued through participation and dissemination of publicity brochures during business visits, conferences, seminars, workshops, trade fairs and exhibitions conducted both locally and internationally; through on-line circulation of the *MTCC News* as well as one-to-one discussions with key contacts by MTCC or its public relations representatives in The Netherlands and Germany.

MTCC continued to support the implementation of two collaborative projects in 2013, namely the *Pilot Study on Group Certification of Rubber Smallholdings under the MTCS*, and the project on *Capacity Building for Compliance with Requirements for Chain of Custody Certification under the MTCS*.

MTCC deeply appreciates the continued cooperation, understanding and support of all the relevant stakeholder groups representing the social, economic and environmental interest groups, as well as the relevant government agencies in Sabah, Sarawak and Peninsular Malaysia towards the implementation of its activities and initiatives in 2013. MTCC sincerely looks forward to continue working with all parties concerned to further promote and encourage the practice of SFM and the implementation of the MTCS in Malaysia.

I am indebted to the Chairman and Board of Trustees, as well as the Members of MTCC, for their trust and guidance which has enabled me to complete my first year successfully. I also wish to express my sincere thanks to all the MTCC staff for their dedication and diligence in carrying out their duties and responsibilities. They have contributed significantly to the successful implementation of the activities and events undertaken by MTCC in 2013.



**YONG TENG KOON**  
Chief Executive Officer  
2 July 2014



# OPERATIONS



## OPERATIONS

### Forest Management Certification

In line with the transition plan from the use of the MC&I(2002) to the MC&I(Natural Forest), eight FMUs had successfully undergone the recertification audits and were awarded PEFC certification in 2012. These eight FMUs continued to maintain their certification in 2013 after successfully undergoing the first surveillance audit against the MC&I(Natural Forest), thus enabling them to produce PEFC-certified timber and to use the PEFC Logo.

One other FMU, i.e. the Kelantan FMU underwent a recertification audit while a new FMU, the Anap Muput FMU located in Sarawak underwent a Stage 2 audit against the requirements of the MC&I(Natural Forest) in 2013. Both FMUs were successful in their respective audit and were granted PEFC certification to the requirements of the new standard in 2013.

Details regarding the date of issuance of certificates, the CBs involved, and the date of audits are shown in **Table 1**.

*Table 1: Details of FMU Audits*

FMU	Certification Body	Recertification Audit Date	Certificate Issuance Date	First Surveillance Audit Date
Segaliud Lokan	SIRIM QAS International Sdn. Bhd.	31 July - 4 August 2012	28 May 2013	26-29 November 2013
Negeri Sembilan	SIRIM QAS International Sdn. Bhd.	3-7 September 2012	1 June 2013	20-22 August 2013
Johor	SGS (Malaysia) Sdn. Bhd.	18-21 June 2012	1 April 2013	24-27 June 2013
Terengganu	SGS (Malaysia) Sdn. Bhd.	10-13 September 2012	1 April 2013	2-5 September 2013
Kedah	SIRIM QAS International Sdn. Bhd.	23-27 September 2012	1 June 2013	30 September – 3 October 2013
Pahang	SGS (Malaysia) Sdn. Bhd.	15-20 October 2012	1 June 2013	7-11 October 2013
Perak	SIRIM QAS International Sdn. Bhd.	8-13 October 2012	1 June 2013	9-13 December 2013
Selangor	SGS (Malaysia) Sdn. Bhd.	26-28 December 2012	1 June 2013	25-27 November 2013
Kelantan	SIRIM QAS International Sdn. Bhd.	20-25 October 2013	1 June 2013	-

FMU	Certification Body	Stage 2 Audit Date	Certificate Issuance Date	-
Anap Muput	SIRIM QAS International Sdn. Bhd.	22-25 April 2013	25 July 2013	-

The ten PEFC-certified FMUs cover a total of 4,649,913 ha of Permanent Reserved Forests (PRFs) as shown in **Table 2**.

*Table 2: PEFC-Certified FMUs*

Name of FMU	Certificate Number	Area (ha)
Segaliud Lokan (Sabah)	FMC 0001	57,247
Negeri Sembilan	FMC 0002	154,577
Johor	SGS-MTCS/FM0102	351,302
Terengganu	SGS-MTCS/FM0103	516,697
Kedah	FMC 0003	307,046
Pahang	SGS-MTCS/FM0104	1,524,827
Perak	FMC 0004	991,436
Selangor	SGS-MTCS/FM0105	238,749
Kelantan	FMC 0005	424,497
Anap Muput (Sarawak)	FMC 0006	83,535
<b>Total Area Certified</b>		<b>4,649,913</b>

## Chain of Custody Certification

Another 99 companies were awarded the PEFC *Certificate for Chain of Custody* by six PEFC-notified CBs under the MTCS in 2013.

Of this total, 61 certificates were issued by the local CBs, i.e. 30 certificates by SGS (Malaysia) Sdn. Bhd, 19 certificates by SIRIM QAS International Sdn. Bhd. and 12 certificates by Intertek Certification International Sdn. Bhd. The remaining 38 certificates were issued by the overseas-based CBs, i.e. 36 certificates by SGS South Africa Pty Ltd, and one certificate each by BM Trada Certification Ltd and Bureau Veritas France.

In addition to the issuance of new certificates, two PEFC *Certificate for Chain of Custody* that were issued by Bureau Veritas Sverige AB, one of the PEFC-notified CBs, were transferred to MTCC's administration in 2013 following Bureau Veritas Sverige AB's notification under the MTCS.

With the addition of the new and transferred certificates and also the withdrawal of 12 certificates in 2013, the number of PEFC *Certificate for Chain of Custody* holders increased to 275 by the end of December.

## OPERATIONS

## Issuance of PEFC Logo Usage Licence

In 2013, 33 applications for the PEFC Logo Usage Licence were approved by the Notification Committee. Of this total, four PEFC Logo Usage Licences were issued to Forest Management certificate holders, while the balance to CoC certificate holders.

The full list of the holders of PEFC Certificate for Chain of Custody including information on Logo Usage Licenses issued by MTCC is as shown in **Appendix I**.

The issuance and annual fees for the issuance of the PEFC Logo Usage Licence remained unchanged, as shown in **Table 3**.

*Table 3: PEFC Logo Usage Licence Fee Schedule*

Logo User Category	Subsets	Issuance Fee (RM)	Annual Fee (RM)
A. MTCC		-	-
B. Forest Management Certificate	Natural Forest and Forest Plantations	50.00	RM0.018 per ha of certified forest
C. CoC Certificate	Based on annual total turnover (RM):		
	Up to 5 Million	50.00	300.00
	Over 5 Million and up to 20 Million	50.00	500.00
	Over 20 Million and up to 50 Million	50.00	750.00
	Over 50 Million and up to 100 Million	50.00	1,000.00
	Over 100 Million	50.00	2,000.00
D. Other users	PEFC-notified CB	50.00	500.00
	Other users	-	-

## OPERATIONS

## Certification Bodies

In 2013, two overseas-based CBs, namely Bureau Veritas Certification France and Bureau Veritas Sverige AB of Sweden, were PEFC-notified by MTCC to operate CoC certification under the MTCS.

With this addition, the total number of PEFC-notified CBs operating CoC certification increased to ten, while those operating forest management certification remained at two.

**Table 4** shows the PEFC-notified CBs under the MTCS as at 31 December 2013.

*Table 4: PEFC-notified CBs under MTCS*

Type of Certification	PEFC-notified CB	Notification Date
Forest Management Certification	1. SIRIM QAS International Sdn. Bhd.	10 December 2009
	2. SGS (Malaysia) Sdn. Bhd.	24 December 2009
Chain of Custody Certification	1. SIRIM QAS International Sdn. Bhd.	2 September 2009
	2. Japan Gas Appliances Inspection Association	2 October 2009
	3. SGS South Africa Pty Ltd - Qualifor Programme	2 October 2009
	4. SGS (Malaysia) Sdn. Bhd.	24 December 2009
	5. Intertek Certification International Sdn. Bhd.	20 August 2010
	6. Scientific Certification Systems	20 August 2010
	7. BM Trada Certification Ltd.	14 September 2012
	8. Holz und Wald Zertifizierungsgesellschaft GmbH	14 September 2012
	9. Bureau Veritas Certification France	17 May 2013
	10. Bureau Veritas Sverige AB	6 September 2013



## EXPORT OF TIMBER PRODUCTS CERTIFIED UNDER MTCS

The export of timber products certified under the MTCS showed a significant increase of 47% from 112,098 m<sup>3</sup> in 2012 to 164,612 m<sup>3</sup> in 2013. India, Iraq, Lebanon, Libya and Sudan became the latest destinations for the year 2013, and were included to the existing list of 33 countries comprising Albania, Australia, Bahrain, Belgium, China, Denmark, The United Arab Emirates (UAE), Finland, France, Germany, Greece, Indonesia, Ireland, Italy, Japan, Jordan, Kuwait, Mauritius, Netherlands, New Zealand, Norway, Oman, Pakistan, Philippines, Sweden, United Kingdom, United States of America, Poland, Qatar, Saudi Arabia, Singapore, South Africa and South Korea.

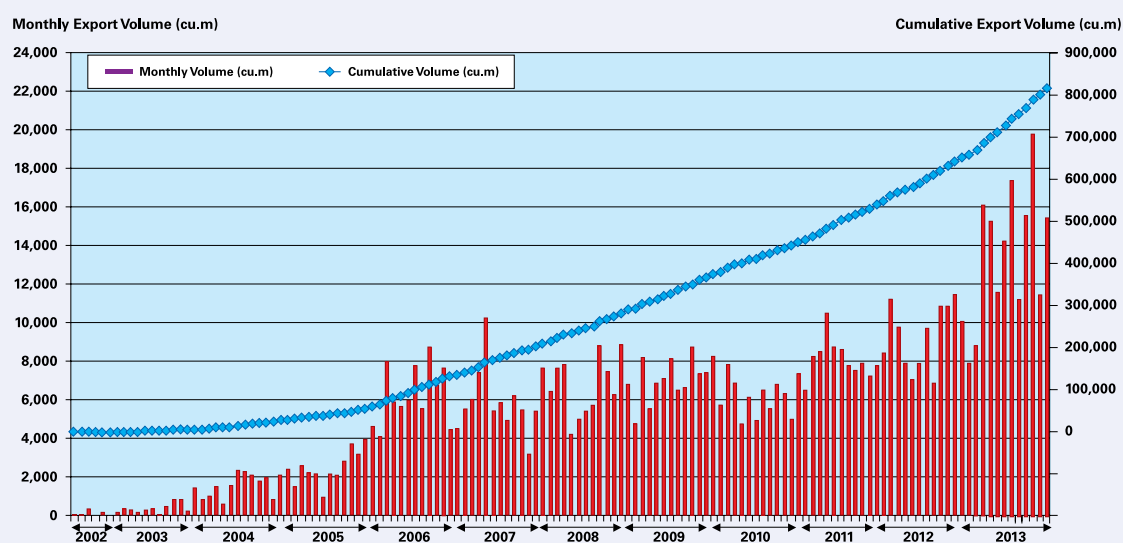
A cumulative total of 814,933 m<sup>3</sup> of certified timber products had been exported by the end of 2013. The Netherlands continued to remain the biggest contributor with 359,552 m<sup>3</sup> (44% of the total quantity) exported since July 2002.

The decision taken by MTCC to encourage all the PEFC CoC certificate holders to use the PEFC Logo on MTCS-certified product beginning 1 July 2012, has resulted in a significant increase in the export of PEFC-certified products. Of the total 164,612 m<sup>3</sup> exported, 107,006 m<sup>3</sup> or 65% were PEFC-certified. The month of October recorded the highest export figure of 14,346 m<sup>3</sup>. By the end of 2013, a total cumulative of 197,404 m<sup>3</sup> of PEFC-certified products had been exported. The United Kingdom imported 28,230 m<sup>3</sup> (26%), thus making it the largest market for PEFC-certified products from Malaysia, followed by The Netherlands importing 16,784 m<sup>3</sup> (16%).

Sawn timber, plywood and mouldings remained as the major products exported, followed by paper-based products, laminated scantlings, laminated finger-jointed and door components. More paper-based companies had started to express their interest in obtaining CoC certification. In 2013, another 14 paper based manufacturers and traders were awarded certification compared to only two companies in 2012. The product range also expanded to cover envelopes, tissue paper and printed products.

**Figure 1** shows the export of timber products certified under the MTCS by month, as well as the cumulative volume since July 2002. **Figures 2** and **3** provide the percentage breakdown of the certified products exported in 2013 by product type and destination, respectively.

*Figure 1: Export of timber products certified under MTCS, July 2002 – December 2013*



Source: MTIB & MTCC

## EXPORT OF TIMBER PRODUCTS CERTIFIED UNDER MTCS

Figure 2: Export of timber products certified under MTCS by product type, 2013

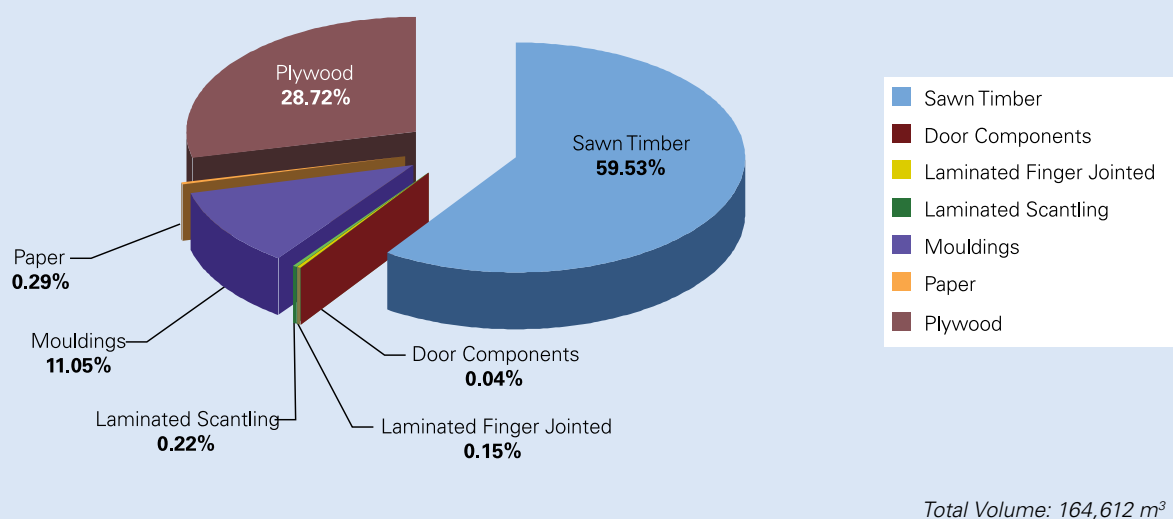
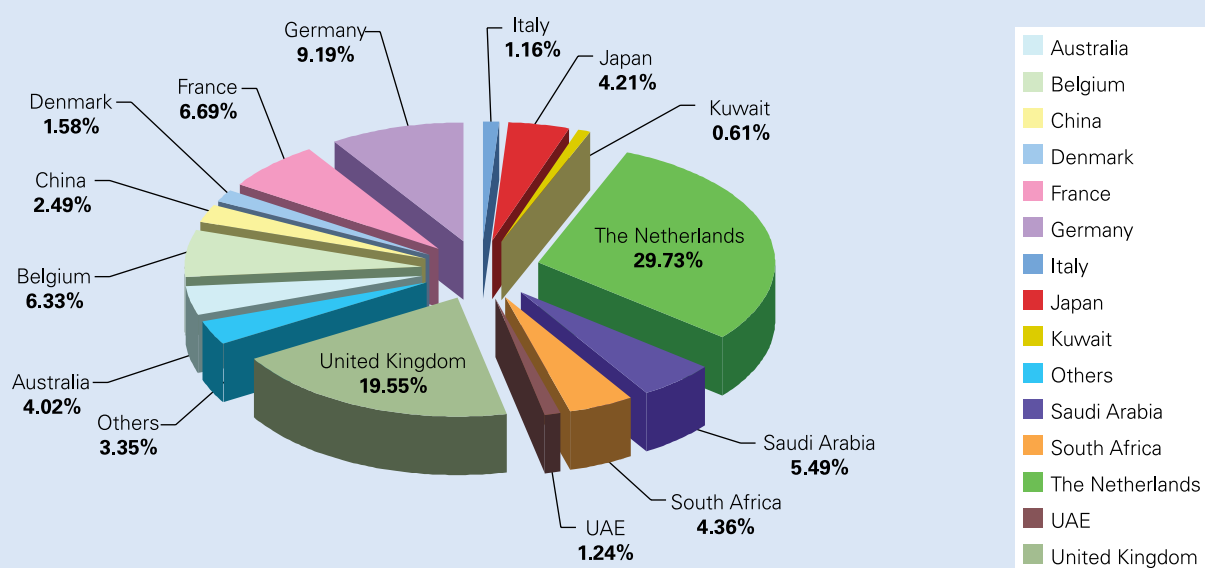


Figure 3: Export of timber products certified under MTCS by destination, 2013



Others: Bahrain, Finland, Greece, India, Indonesia, Iraq, Jordan, Korea, Lebanon, Libya, Mauritius, New Zealand, Norway, Oman, Pakistan, Philippines, Poland, Qatar, Singapore, Sweden and USA

## CERTIFICATION STANDARDS

---

### Review of MC&I(Forest Plantations)

The document *Rules on Standard Setting Process for Development of Timber Certification Standards* under the MTCS requires that a forest management standard shall be reviewed every five years. In line with this requirement, the MC&I(Forest Plantations) which was formulated in 2009 for the certification of forest plantations was due for a review in 2013.

Following the decision of the 57<sup>th</sup> Meeting of the Board in September 2012, a stakeholder mapping was conducted and an announcement on the review of the MC&I(Forest Plantations) made in December 2012, highlighting the key activities that would be undertaken during the review process commencing January 2013.

### First Public Comment Period

The review process started with the first (60-day) public comment period on 15 January. The announcement was made through circulation by post, e-mail and via the MTCC website. The first public comment period was extended to 1 April based on requests by a number of stakeholders. At the end of the period, comments and proposals for amendments to the MC&I(Forest Plantations) were received from 14 organisations as follows:

- Department of Environment Sarawak
- Labour Department Sarawak
- Department of Environment Sabah
- Forestry Department Peninsular Malaysia
- Department of Wildlife and National Parks Peninsular Malaysia (PERHILITAN)
- Labour Department Peninsular Malaysia
- Iskandar Regional Development Authority
- Malaysian Trade Union Congress (MTUC) Sarawak Division
- Wildlife Conservation Society (Malaysia Program)
- Malaysian Nature Society (Penang Branch)
- World Wide Fund for Nature (WWF) Malaysia
- Sarawak Timber Association (STA)
- Zedtee Sdn. Bhd.
- KTS Forests Management Sdn. Bhd.

### Formation of the Multi-Stakeholder Standards Review Committee

MTCC as the Secretariat of the review process facilitated the formation of the multi-stakeholder Standards Review Committee (SRC). The SRC serves as the “Working Group/Committee” for standards development, and has the overall responsibility in the review of the MC&I(Forest Plantations). The 15-member SRC comprises representatives from the economic, environmental and social (indigenous people and workers union) groups, and the relevant government agencies in equal numbers from Sabah, Sarawak and Peninsular Malaysia.

The formation of the SRC was initiated through a letter which was sent to all the stakeholder groups in January. Two options were offered to facilitate the nomination and election of a Member and an Alternate Member for each stakeholder group. Option 1 was for the stakeholder group to appoint a coordinator from among the members of the stakeholder group to conduct the nomination and election process; while Option 2 allowed the stakeholder group to request the assistance of the Secretariat to facilitate the nomination and election process on its behalf.

## CERTIFICATION STANDARDS

In this connection, MTCC was requested to facilitate the nomination and election process for the economic stakeholder group in Sabah, the social (indigenous peoples) groups in Sarawak and Peninsular Malaysia; and the relevant government agencies for all the three regions.

The SRC was finally formed in July 2013. The elected Members and Alternate Members of the SRC are shown in **Table 5**.

*Table 5: Members and Alternate Members of the Standards Review Committee*

Region	Stakeholder Group	Member	Alternate Member
Sabah	Social (Indigenous Peoples)	<b>Dr (H) Banabas Tapin</b> Kadazandusun Cultural Association	<b>Native Chief Saniban Bin Amphila</b> United Sabah Dusun Association
	Social (Workers' Union)	<b>Engrit Liaw</b> Sabah Timber Industry Employees Union	<b>Apolinar Tolentino</b> Building and Wood Workers' International
	Environmental	<b>Omar Abdul Kadir</b> Malaysian Nature Society (Sabah Branch)	<b>Bernard Tai</b> WWF-Malaysia
	Economic	<b>Raymond Chiew</b> Timber Association of Sabah	<b>Edmund Gan</b> Sabah Timber Industries Association
	Relevant Government Agencies	<b>Musa Salleh</b> Sabah Forestry Department	<b>Assoc. Prof. Dr Phua Mui How</b> School of International Forestry, Universiti Malaysia Sabah
Sarawak	Social (Indigenous Peoples)	<b>Assoc. Prof. Dr. Ramy Bulan</b> Federation of Orang Ulu Associations of Sarawak, Malaysia	<b>Elbson Marajan Pengeran</b> Sarawak Dayak National Union
	Social (Workers' Union)	<b>Fatimah Mohamad</b> Union of Forestry Employees Sarawak	<b>Mohamad Jefrie Abdullah</b> Timber Industry Employees Union Sarawak
	Environmental	<b>Dr. Melvin Gumal</b> Wildlife Conservation Society (Malaysia Program)	<b>Dr. Henry Chan</b> WWF-Malaysia
	Economic	<b>Peter Ling Kwong Hung</b> Sarawak Timber Association	<b>Nicholas Ting Kang Hwa</b> Sarawak Timber Association
	Relevant Government Agencies	<b>Ting Chek Hieng</b> Sarawak Forestry Corporation	<b>Roslan b. Othman</b> Sarawak Forest Department
Peninsular Malaysia	Social (Indigenous Peoples)	<b>Wak Ziah a/p Bak Sandin</b> Persatuan Orang Asli Perak	<b>Jesrina Grewal</b> Human Rights Commission of Malaysia (SUHAKAM)
	Social (Workers' Union)	<b>Mohd Khalid Atan</b> Timber Employees Union Peninsular Malaysia	<b>Mohd. Najid Shauqi bin Mohd. Sahar @ Ishak</b> Malay Forest Officers Union, West Malaysia
	Environmental	<b>Balu Perumal</b> Malaysian Nature Society	<b>Dr. Pan Khang Aun</b> WWF-Malaysia
	Economic	<b>Goh Chee Yew</b> Malaysian Wood Industries Association	<b>Low Ching Cheong</b> Timber Exporters Association Malaysia
	Relevant Government Agencies	<b>Dato' Hj. Nor Akharrudin Mahmud</b> Forestry Department Peninsular Malaysia	<b>Prof. Dato' Dr. Wan Razali Wan Mohd</b> Universiti Putra Malaysia

## CERTIFICATION STANDARDS

### First Meeting of the SRC

The First Meeting of the SRC was held on 26-28 August in Kuala Lumpur. It was attended by a total of 24 participants comprising Members, Alternate Members and Observers.

The Meeting deliberated and considered all the comments received from the First Public Comment on the MC&I (Forest Plantations) and resulted in the formulation of Enquiry Draft 1 on the review of the MC&I (Forest Plantations).

### Second Public Comment period

The Enquiry Draft 1 was subjected to a second 30-day public comment period in December 2013, which resulted in comments and proposals received from four (4) organisations as follows:

- Department of Wildlife and National Parks Peninsular Malaysia (PERHILITAN)
- Forestry Department Peninsular Malaysia
- Sabah Forestry Department
- WWF-Malaysia

The comments received would be consolidated by the Secretariat for consideration by the SRC during its Second Meeting scheduled in early 2014.



*First meeting of the SRC in progress*



*Standards Review Committee members, alternate members and secretariat*



## CERTIFICATION STANDARDS

## Assessment of MTCS for PEFC Re-endorsement

In May 2009, the PEFC Council announced its decision to endorse the MTCS for a period of five years beginning 1 May 2009. Since the endorsement of the MTCS, the MTCC management has been reviewing the scheme documents from time to time to ensure that they are in line with the changes made in relation to the PEFC requirements and adoption of revised documents by the PEFC Council. This has been necessary to ensure that the MTCS continues to comply with the latest requirements adopted by the PEFC Council.

Beginning late 2012, the MTCC management recognised that there was a need to start preparing for the re-endorsement of the MTCS by the PEFC Council as the initial endorsement will be expiring in May 2014. By early 2013, the MTCC management had taken the necessary action to revise and update all the MTCS documents in line with the requirements of the latest approved PEFC documentation.

The MTCC management also noted that in early 2012, the PEFC Board of Directors had approved the procedures for an Extraordinary Assessment of all schemes regarding the requirements that were approved and adopted by the 14<sup>th</sup> PEFC General Assembly, to be carried out by May 2013. This assessment is considered as an extraordinary and *ad-hoc* assessment of schemes against the new PEFC Council standards.

With approval from the MTCC Board, on 8 January, MTCC submitted to the PEFC Secretariat its application to exclude the MTCS from the extraordinary assessment, and also informed the PEFC Council that MTCC would be submitting the scheme documents for the re-endorsement of the MTCS before 12 August 2013.

The PEFC Secretariat informed MTCC on 18 March that the PEFC Board of Directors had considered MTCC's application to be excluded from the requirement to submit its scheme documentation to the PEFC Council for an extraordinary assessment by 13 May 2013, and decided to extend the submission of evidence on compliance with the requirements of the five PEFC documents (referred by the PEFC as the "2010 standards") for the MTCS to 13 August 2013.

Upon approval by the MTCC Board at its 55<sup>th</sup> Meeting held on 6 June, the MTCC management submitted the scheme documents for the purpose of re-endorsement of the MTCS to the PEFC on 5 August. On 17 September, the PEFC informed MTCC of the appointment of TJ Consulting (based in Luxembourg) as the consultant to undertake the assessment of the MTCS.

As of December 31, the appointed consultant had submitted an Interim Draft Report on the assessment of the MTCS. It is anticipated that the results of the assessment of the MTCS for PEFC re-endorsement will be made known by mid-2014.



## TRAINING

### Training for Auditors on MC&I(Natural Forest) and MC&I(Forest Plantations)



*Siti Syaliza giving training on MC&I(Natural Forest) and MC&I(Forest Plantations)*

MTCC conducted a 5-day combined auditor training course on the MC&I(Natural Forest) and MC&I(Forest Plantations) standards from 1-5 December in Sungai Petani, Kedah. The aim of the training was to familiarise the auditors with the requirements of the two standards, as well as the assessment procedures for conducting audit for certification of natural forest and forest plantation management. The training is in line with the competency requirements of STANDARDS MALAYSIA for certification bodies operating forest management certification for both natural forest and forest plantations under the MTCS.

The training was attended by 22 participants, comprising auditors from Bureau Veritas Certification, SIRIM QAS International, SGS Malaysia, Forest Research Institute Malaysia and Global Forestry Services.



*Interview session with representatives of the local communities during training session*



*Briefing on management practices in the forest plantation management unit*



## TRAINING

The first two days of the training were conducted in a classroom setting, focusing on the requirements of the two standards for forest management certification. Participants were also briefed on the competency requirements for bodies operating forest management certification under the MTCS, as well as the various auditing tools and skills necessary in carrying out forest management audit.

The course programme also included a two-day field segment where the participants were required to conduct a trial audit for forest management certification for both the natural forest and forest plantations. The participants were divided into four groups to undertake the following activities: i) documentation review, ii) on-site assessment, iii) consultation with stakeholders, iv) issuance of corrective action requests (CARs), and v) preparation of audit report and recommendations, under the guidance of in-house trainers from MTCC.

For the MC&I(Natural Forest) field segment exercise, the participants audited an active harvesting site and a recently logged-over forest in the Bukit Enggang Forest Reserve, and visited the Jeniang Forest Checking Station to inspect the CoC system in tracking the flow of the forest product, and a regenerated forest area in the Chebar Kechil Forest Reserve to audit the post-felling forest inventory. Consultations were also carried out with relevant stakeholders, i.e. the local communities at Kg. Landai, and the forest workers at the logging camp in the Ulu Muda Forest Reserve.

For the field segment on the MC&I(Forest Plantations), the participants audited a teak (*Tectona grandis*) plantation and a rubber (*Hevea brasiliensis*) plantation to assess the forest plantation management practices. Various aspects of forest plantation establishment and operations were assessed based on the requirements of the MC&I(Forest Plantations), including a visit to a growth plot and a forest nursery. The participants successfully completed the training with the presentation of the group trial audit findings on the last day of the course.



Briefing on activities conducted in a nursery



*Various briefing sessions on revised PEFC CoC standard held throughout Peninsular Malaysia, Sabah and Sarawak*

## Briefing on Revised PEFC CoC Standard

In 2013, the PEFC Council adopted the revised chain of custody standard entitled PEFC ST 2002:2013 *PEFC Chain of Custody of Forest Based Products-Requirements* dated 24 May 2013. The revised standard replaces the PEFC ST 2002:2010 *Chain of Custody of Forest Based Products- Requirements* dated 26 November 2011. The PEFC ST 2002:2010 document will be withdrawn on 24 February 2014, after a nine month transition period.

The revised standard offers an efficient mechanism for PEFC chain of custody certificate holders to demonstrate compliance with the European Union Timber Regulation (EUTR) requirements through small but smart changes. The EUTR, which entered into force on 3 March 2013, prohibits illegally harvested timber from being placed on the EU market. It sets out mandatory procedures designed to minimise the risk of illegal timber being sold and applies to both imported and domestically produced timber and is therefore relevant for companies globally.

To provide a better understanding on the revised PEFC ST 2002:2013 standard and changes made in comparison to the PEFC ST 2002:2010 document, a number of briefing sessions were conducted throughout Malaysia for the CoC certificate holders under the MTCS. For Peninsular Malaysia, the briefing sessions were held on 21, 25 and 27 November in Kuala Lumpur, Ipoh and Kuantan, respectively, while the briefing in Sarawak was held on 18 December in Sibu and for Sabah on 19 December in Kota Kinabalu.



*Briefing on revised PEFC CoC standard presented by Harnarinder Singh*



PROMOTION





## PROMOTION

### Promotional Activity in the Middle East

For the second time, MTCC participated in the Dubai International Wood & Wood Machinery Show that was held on 9 -11 April. A total of 550 exhibitors from 40 countries participated in the Dubai Wood Show. Malaysia was represented by six exhibitors, namely Malaysian Timber Council (MTC), HeveaBoard Berhad, Pio Hardwoods (M) Sdn. Bhd., Segamat Panel Boards Sdn. Bhd., Carl Ronnow (Malaysia) Sdn. Bhd., and Sarawak Timber Industry Development Corporation (STIDC). MTCC's presence at the show was through the display of exhibits of information on MTCS, publications and promotional items at the MTC booth.

In conjunction with the Wood Show, MTCC CEO Yong Teng Koon made a presentation on the *"Implementation of the MTCS and PEFC Certification"*, highlighting the operation of the MTCS and the availability of PEFC-certified timber and timber products from Malaysia at the *"Promoting Wood Solutions in the GCC"* seminar held on 10 April. The seminar aimed to explore and promote wood solutions in the design and construction sectors of the Gulf Coordination Council (GCC) comprising UAE, Oman, Saudi Arabia, Kuwait, Qatar and Bahrain. The seminar was divided into two sessions with the morning session directed at the traders, while the afternoon session catered for the architects and contractors.



MTC Booth at the Dubai International Wood & Wood Machinery Show



Yong Teng Koon making a presentation at the Promoting Wood Solutions in the GCC Seminar

During the Wood Show, Yong also took the opportunity to hold follow-up meetings and discussions with the following organisations with the objective to raise awareness on the MTCS and the availability of PEFC-certified timber and timber products from Malaysia:

- (i) Dubai Municipality – Dr. Ali Ahmed Elian, Engineering Materials Expert and Dr. Prakasan V.C, Principal Analyst, Dubai Central Laboratory Department
- (ii) Society of Engineers – Mr. Majed Farouk Hanna, General Manager
- (iii) UAE Contractors Association – Dr. Imad Al Jamal
- (iv) EMAAR Properties – Ms. May Monjardin, Interior Designer

The Dubai Municipality is the authority that oversees the implementation of public procurement policies and controls the licensing and issuance of building permits in Dubai. In 2010, the Dubai Government issued the *"Green Building Regulations and Specifications"* that have to be applied on all buildings in the Emirate of Dubai in line with the sustainable development standards adopted by the government. In the document, PEFC which includes the MTCS has been listed as one of the acceptable schemes for certified/accredited sources.

## MTCC Journalist Programme

In conjunction with the PEFC Forest Certification Week held in Kuala Lumpur on 11-15 November, MTCC organised a journalist programme for three international timber trade and forestry related journalists, comprising two journalists from Germany and one from The Netherlands, as follows:

- Lutz Odewald, Editor-in-Chief of Genau (professional newspaper of the German Association for Joiners and Carpenters)
- Josef Krauhausen, Editor of Holz-Zentralblatt (leading newspaper for the timber industry and forestry in Germany)
- Kees de Vries, freelance publicist, writer and photographer in the field of construction, wood, architecture and sustainability (formerly editor of the timber trade newspaper, Houtwereld of The Netherlands)

Besides covering the key events of the PEFC Forest Certification Week, the objective of the programme was to provide an opportunity for the journalists to acquaint themselves with sustainable forest management practices in Malaysia and to have an on-the-ground exposure and experience on the operation of the MTCS through visits to a PEFC-certified FMU and timber companies.

The highlights of the programme included the journalists participating in the Opening Ceremony of the 18<sup>th</sup> PEFC General Assembly, attending the press conference with the Minister of Plantation Industries and Commodities, as well as participating in some of the Stakeholder Dialogue sessions.

The journalists visited two timber factories to better understand the chain of custody certification process and went on a field trip to a PEFC-certified forest FMU to observe the implementation of sustainable forest management practices under the MTCS. In addition, the journalists interviewed representatives from the social, environmental and economic stakeholder groups, FMU managers, relevant government agencies, certification bodies and members of the MTCC Board of Trustees, to obtain their feedback in order to assess and better appreciate the implementation of the MTCS.



*Journalists interviewing MTCC Trustees, representatives of stakeholder groups and certification bodies*



## PROMOTION



*Journalist visiting Victory Enterprise Sdn. Bhd., Klang, Selangor*



*Visit to Maran Road Sawmill Sdn. Bhd., Mentakab, Pahang*



*Field trip to Jerantut Forest Reserve and Taman Negara (National Park)*

## Publicity Programmes / Exhibitions

Publicity brochures as well as information on the developments related to the MTCS were distributed at the following fairs and exhibitions in which MTCC participated:

- International Bouwbeurs 2013, Utrecht (February)
- Export Furniture Exhibition (EFE), Serdang (March)
- Ecobuild 2013, London (March)
- Sarawak Grand Timber Expo, Kuching (June)
- SPOGA 2013, Cologne (September)
- Timber Expo, Birmingham (September)
- International Greentech and Eco Products Exhibition Malaysia (IGEM), Kuala Lumpur (October)
- Malaysia International Commodity Conference & Showcase (MICCOS), Kuala Lumpur (October)
- German Timber Day, Cologne (October)



MTCC joint stand with MTC at Bouwbeurs 2013, a biennial trade show for the Dutch construction sector. A unique exhibit in the stand was the special brown coloured 'timber tree' used to display the MTCC and MTC publications and brochures



MTCC booth at EFE 2013 displaying PEFC-certified garden furniture from Hang Tuah Furniture, and door jambs and frames from Ah Hai Industries



MTCC participated in the Sarawak Grand Timber Expo held on 7-10 June in Kuching, jointly organized by the Sarawak Timber Industry Development Corporation (STIDC) and Sarawak Ministry of Industrial Development (MID) in conjunction with STIDC's 40<sup>th</sup> Anniversary



MTCC, MTC, PEFC UK and Sustainable Forestry Initiative (SFI) joint stand at the 9<sup>th</sup> Ecobuild exhibition, world's leading green building show, held on 5-7 March in London



## PROMOTION



MTCC and MTC joint stand at SPOGA 2013 held on 8-10 September in Germany with display of PEFC-certified garden furniture and flooring contributed by Hang Tuah Furniture, Strategi Mutiara Manufacturing Berhad and Gilbert Hardwoods Industries



MTCC, MTC, PEFC UK and SFI joint stand at the Timber Expo 2013 held on 24-25 September in Birmingham. Timber Expo is the UK's only timber dedicated show, where an audience of constructors, specifiers, housebuilders and developers keep themselves up-to-date with the innovations and developments across the constantly evolving timber industry



MTCC booth at IGEN 2013 held on 10-13 October in Kuala Lumpur. IGEN 2013 is an annual event organised by the Ministry of Energy, Green Technology and Water (KeTTHA) together with the Malaysian Green Technology Corporation, Expomal International, International Green Purchasing Network (IGPN) and Green Purchasing Network Malaysia (GPNM), focusing on the theme "Advancing Green Growth and Global Entrepreneurship"



MTCC and MTC joint stand at the German Timber Day held on 29-30 October in Germany with display of PEFC-certified door, garden furniture and flooring contributed by Ah Hai Industries, Hang Tuah Furniture, Strategi Mutiara Manufacturing and Gilbert Hardwoods Industries



MTCC's display on timber certification in the Timber Showcase pavilion at the Malaysia International Commodity Conference & Showcase (MICCOS) 2013, held on 24-27 October at MAEPS, Serdang. MICCOS is a biennial event organised by the Ministry of Plantation Industries and Commodities and its agencies to showcase Malaysian Commodities

## PROMOTION

Several interview sessions were organised with the mass media to generate awareness for the MTCS as well as highlight Malaysia's efforts in implementing sustainable forest management through the operation of the MTCS:

### TraXX FM Radio Station

TraXX FM is an English radio station operated by Radio Televisyen Malaysia.



MTCC CEO being interviewed by Rishi Singh, presenter of TraXX 101, the station's main talk show on current affairs

### New Straits Times



Article on MTCC and MTCS published in the Green Technology Supplement of the New Straits Times in conjunction with the IGEM exhibition

## Publications

In 2013, MTCC published five issues of its newsletter the *MTCC News*, to keep certificate holders and stakeholder groups updated on the latest developments in the MTCS and matters related to timber certification and sustainable forest management.

The following articles, information updates and press releases were issued by MTCC and posted on the MTCC website:

- 10 January – PEFC Collaboration Fund – 2013 Call for Proposals
- 14 January – ANNOUNCEMENT: Review of the MC&I (Forest Plantations) – First Public Comment from 15 January - 16 March 2013



## PROMOTION

- 22 February – REMINDER: Review of MC&I(Forest Plantations) – First Public Comment
- 29 April – Summary of First Public Comment on Review of MC&I(Forest Plantations)
- 15 May – Clarification on Statement on Rubberwood Products issued by MTIB
- 17 July – MICCOS 2013 – Malaysia International Commodity Conference & Showcase
- 18 July – PEFC Forest Certification Week 2013 – Advancing Sustainable Trade in Asia, 11-15 November 2013, Kuala Lumpur
- 18 July – Review of the MC&I(Forest Plantations) – Formation of the Standards Review Committee (SRC)
- 26 November – MTCC Chairman Receives Chinese Friendship Award
- 26 November – MTCC achieves second highest increase in CoC certification at PEFC GA
- 26 November – Minister Opens PEFC General Assembly; Highlights Importance of Certification
- 27 November – ANNOUNCEMENT: Review of the MC&I(Forest Plantations) – Second Public Comment (1-31 December 2013)

The following press releases were issued by KaiserCommunication GmbH in Germany:

- The mood for certified tropical timber in the timber trade and wooden window branch sector is very positive
- Spoga+gafa 2013: Joint booth of the Malaysian organizations Malaysian Timber Council and Malaysian Timber Certification Council underlines the important market of Germany for PEFC-certified outdoor furniture from Malaysia (Joint MTCC and MTC press release)
- The first ever PEFC Certification Week will take place in Kuala Lumpur mid of November 2013



## Participation in Conferences / Seminars / Workshops / Courses / Meetings

MTCC participated in a number of international and local conferences, seminars, workshops, courses and meetings during which presentations on the MTCS and other activities were made. These included the following:-

- Industry Briefing on Capacity Building for Compliance with Requirements for Certification under MTCS, organised by MTIB, 22 February (Butterworth), 14 March (Kuala Lumpur), 21 March (Kuala Terengganu) and 23 April (Muar)
- IRIM Executive Talk, 20 June, Kuala Lumpur
- Lecture to students of School of International Forestry, UMS, 22 November, Kota Kinabalu

## PROMOTION



Harnarinder Singh briefing CoC certificate holders on the revised PEFC CoC standard

MTCC conducted the following briefing sessions:

- Briefing on MC&I(Natural Forest) and MC&I(Forest Plantation) to Yayasan Sabah, 21 May, Kota Kinabalu
- Briefing to HeveaBoard Sdn. Bhd. on MTCS and PEFC Certification, 13 June, Melaka
- Briefing on Revised PEFC CoC Standard
  - 21 November, Kuala Lumpur
  - 25 November, Ipoh
  - 27 November, Kuantan
  - 18 December, Sibu
  - 19 December, Kota Kinabalu

## RECOGNITION OF MTCS

### PUBLIC PROCUREMENT POLICIES

As a PEFC-endorsed scheme, the MTCS has continued to be accepted under the national timber procurement policies of Denmark, United Kingdom, Germany, Finland, Belgium, Switzerland, France and New Zealand, as well as the Keurhout System of The Netherlands as meeting the requirements for sustainable timber.

#### The MTCS also continued to be accepted by the following:

- The Forestry Agency, Ministry of Agriculture, Forestry and Fisheries, Japan which lists MTCS in its *Guideline for Verification on Legality and Sustainability of Wood and Wood Products* (since April 2006).
- The Dutch Ministry of Infrastructure and the Environment [formerly Ministry of Housing, Spatial Planning and Environment (VROM)] which accepts MTCS as meeting the requirements for legality of timber (since April 2007).
- The Free and Hanseatic City of Hamburg, Germany which has granted full acceptance of the MTCS in its procurement policy (since December 2009).



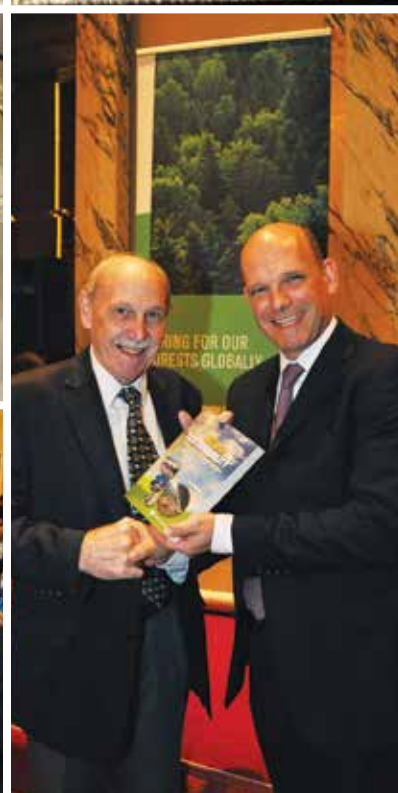
### GREEN BUILDING SYSTEMS

PEFC-endorsed MTCS continued to be recognised under the green building schemes of Australia, Italy, Singapore, The Netherlands, United Kingdom, Canada, United States of America, Japan and Abu Dhabi, UAE.

The Green Building Index (GBI) in Malaysia has recognised the MTCS under its Sustainable Timber criteria since April 2010.









# PEFC FOREST CERTIFICATION WEEK





## PEFC FOREST CERTIFICATION WEEK



*PEFC Board Members during the 18<sup>th</sup> PEFC General Assembly*



*PEFC members at the General Assembly*



*Malaysian Delegation at the PEFC General Assembly*



*Yong Teng Koon receiving the Certificate of Appreciation on behalf of MTCC from William Street Jr. and Ben Gunneberg*

The inaugural PEFC Forest Certification Week was held in Kuala Lumpur from 11-15 November. The event which was jointly organised by PEFC and MTCC, was attended by participants from 35 PEFC member countries, observers and potential members, as well as almost 300 stakeholders of diverse backgrounds from 46 countries. The event was held for the very first time in a tropical country and Malaysia was selected as PEFC recognises that Asia holds the key to unlocking the production and trade of sustainable forest products, as well as the growing importance of the region.

### 18<sup>th</sup> PEFC General Assembly

The highlight of the PEFC Forest Certification Week was the 18<sup>th</sup> PEFC General Assembly (GA), held on 13 November 2013. The GA was officiated by YB Datuk Amar Douglas Uggah Embas, Minister of Plantation Industries and Commodities, Malaysia. The GA was attended by over 100 PEFC members comprising PEFC board members, national governing bodies, international and extraordinary members, who also attended the opening ceremony together with other invited guests and media representatives, both local and international. MTCC was represented by its Chairman, Dato' Dr Freezailah Che Yeom, Chief Executive Officer, Yong Teng Koon and Senior Manager (Product), Harnarinder Singh.

The Minister in his opening address reiterated that Malaysia is committed to manage its forests in a sustainable manner to take full benefits of the environmental, social and economic benefits they provide. He pointed out that while lack of financial resources, institutional capacity and human resources often hamper the implementation of good practices in the forests, Malaysia had already pledged to keep at least 50% of its land area under forest cover at the Earth Summit in 1992, and in 1998 established MTCC to mainstream responsible forest management, and develop and implement a national certification scheme for the country. The Minister noted that the MTCS had achieved a significant milestone by becoming the first Asian national forest certification system to achieve international recognition by being accorded endorsement by the PEFC Council, and today one third of the Malaysia's permanent reserved forests are certified as sustainably and responsibly managed.

Meanwhile, Chairman of PEFC International William Street Jr., in his address noted that with more than 300,000 people working in the forestry sector in Malaysia, the social dimensions of sustainability are critically important to the rural development of Malaysia. He highlighted that the MTCS is the first forest certification system globally that integrated social requirements in its chain of custody certification, protecting worker's rights along the entire supply chain and thus playing an important role in advancing the livelihoods of these people. He pointed out that the Malaysian standard had set an example for appropriately balancing the different stakeholder needs and expectations in maintaining and advancing the forest resources, and serves as a model for other countries across Asia. Street emphasised that the PEFC is looking forward to continuing its work with Malaysia, and with members in China and Indonesia, and interested stakeholders in countries such as India,

## PEFC FOREST CERTIFICATION WEEK

Japan, the Philippines, Thailand and Vietnam to develop and promote forest certification in their respective countries and advance the sustainable forest management agenda.

Ben Gunneberg, PEFC Secretary General presented the *PEFC Update*, which highlighted that the total PEFC-certified forest area had increase by 6.3% (14.9 million ha) to 252.3 million ha and that the number of PEFC chain of custody certificates had also shown an increase of 6.9% (to 10,194 certificates). Gunneberg continued to highlight that PEFC is optimistic of forest certification under the PEFC scheme gaining more ground in the Asia region since legality and governance issues are being addressed at the highest levels by many of the governments in the region.

The 18<sup>th</sup> GA also approved the applications submitted by the European Timber Trade Federation (ETTF) and the International Council of Forest & Paper Associations (ICFPA) to become International Stakeholder Members of the PEFC Council. These two members joined the Weyerhaeuser Company as new PEFC International Stakeholder Members in 2013.

The GA also agreed with the proposal of the PEFC Council Nominations Committee to appoint Natalie Hufnagl-Jovy



William Street Jr. giving his welcome remarks at the General Assembly opening ceremony



YB Minister Douglas Uggah Embas presenting his opening remarks at the General Assembly

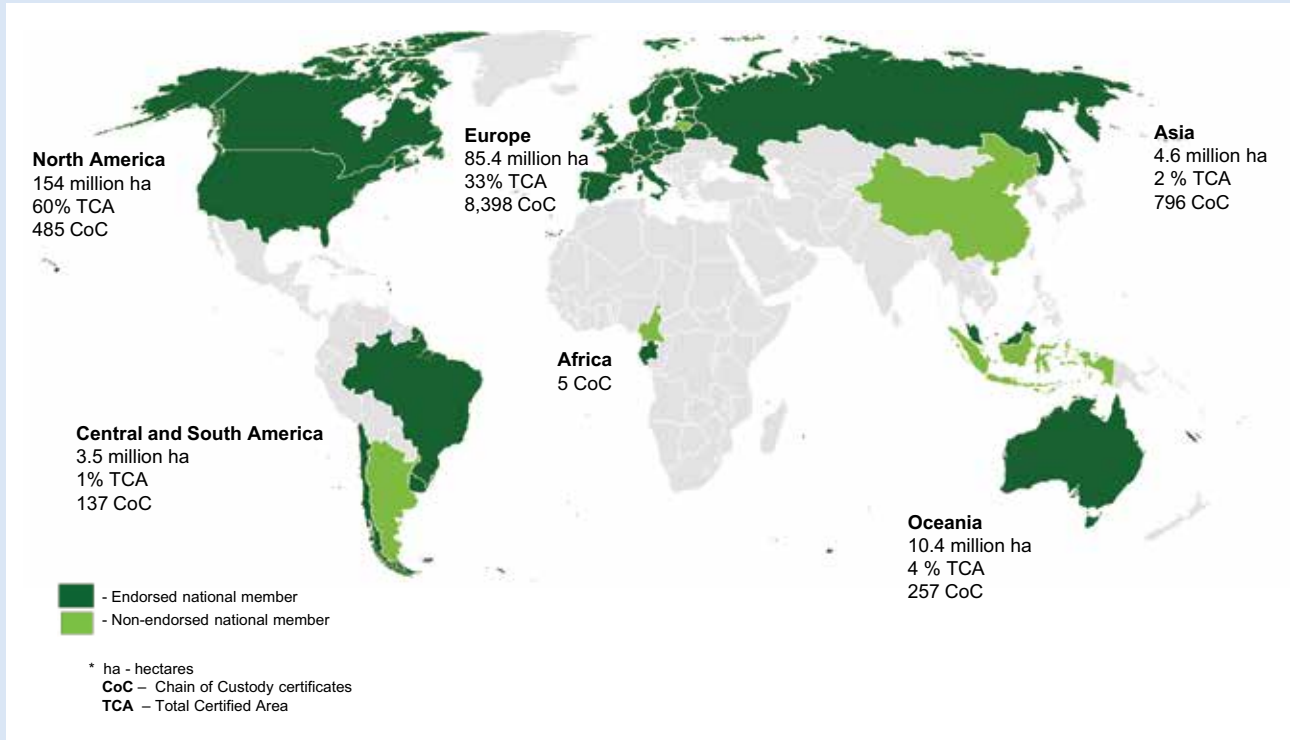
(Germany) as Vice Chair of the PEFC Council, and re-elected Genevieve Chua (Singapore), Julian Walker-Palin (United Kingdom), Olivier Bertrand (France) and Pedro Albizu (Spain) as Members of the PEFC Council Board of Directors for a three-year period (2013-2016). The GA also appointed three candidates, Dato Dr. Freezailah Che Yeom (Malaysia), Dr. Christopher Francis Lorenz (UK) Prins (UK) and Clifford F. Schneider (USA), as members of the Nominations Committee for the year 2014.

During the GA, the Indonesian Forest Certification Corporation (IFCC), which was admitted as the PEFC NGB in Indonesia, took the opportunity to hand over its scheme documentation to the PEFC Council Secretariat to be assessed for PEFC endorsement.

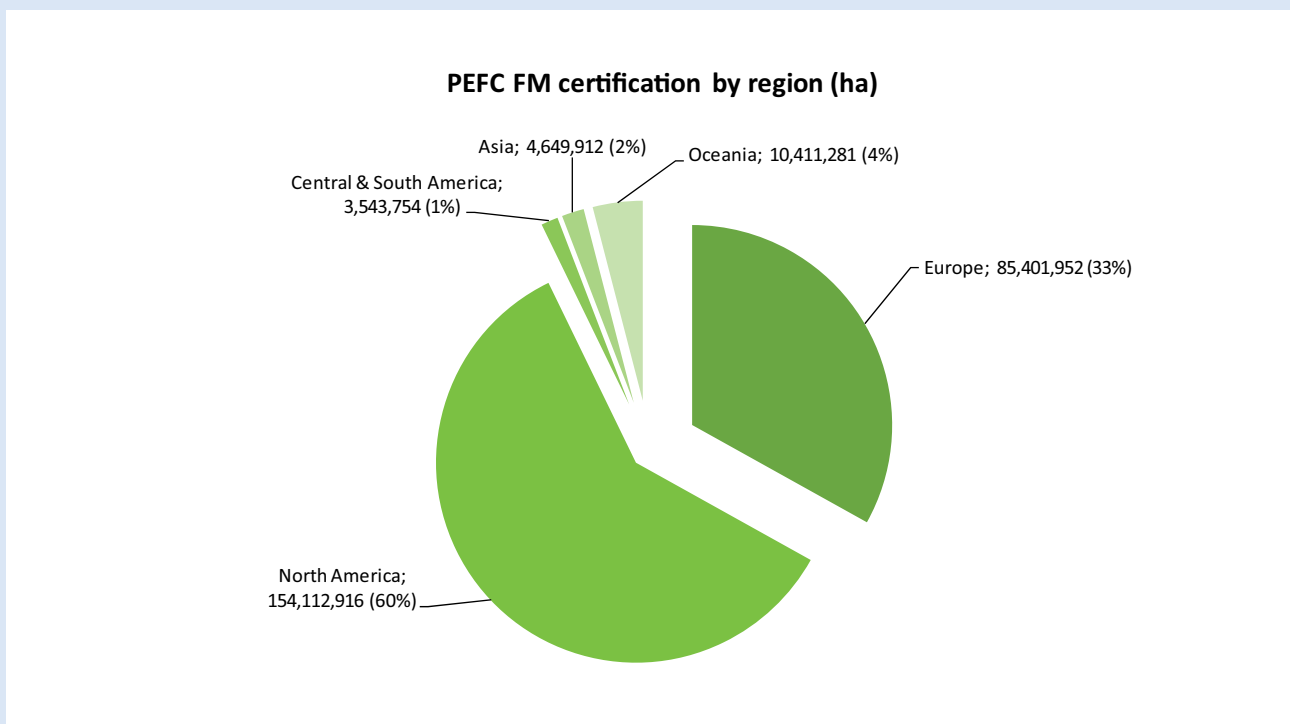
In conjunction with the meeting, *Certificates of Appreciation* were awarded to out-going Board members for their contributions to PEFC, newly elected members, recently endorsed schemes, and to the members in first, second and third place for chain of custody and forest area growth in the last year. In this connection, MTCC was honoured to be awarded with the *Certificate of Appreciation* in gaining the second greatest increase in chain of custody certification. The highest increase of CoC certification was awarded to PEFC France while PEFC Spain recorded the third highest increase. At the same ceremony, Sustainable Forestry Initiative (SFI), PEFC France and PEFC Poland, were also awarded with *Certificate of Appreciation* for achieving the highest increase in certified forest areas, in descending order.



## MEMBERS; ENDORSED SYSTEMS; DISTRIBUTION OF CERTIFICATES



## CERTIFIED FOREST AREA BY REGION



## PEFC FOREST CERTIFICATION WEEK

### PEFC Stakeholder Dialogue

After the 18<sup>th</sup> GA, the 4<sup>th</sup> PEFC Stakeholder Dialogue along with three different parallel side events were held on 14-15 November, focusing on the important theme of *Linking sustainable forest product supply chains through Asia*. The Dialogue provided a platform to enable more in-depth discussions amongst the participants on the first day, and also to provide the opportunity for other organisations to host a series of interactive side events on the second day. The Dialogue was very well attended and brought together more than 230 representatives from a wide variety of organisations and diverse stakeholder groups across the forest sector landscape, not only from Malaysia but also from across the world, to discuss the current status, share perspectives on approaches that work, identify challenges that need additional attention, and also to take stock and identify opportunities to catalyse uptake of sustainable practices within the region.

The keynote address was presented by Dato' Dr. Freezailah, as the Co-Chair of the Dialogue, who emphasized that Asia is a region that is shaping the world's landscape of forestry, timber trade and consumption, and holds the key to unlocking the production and trade of sustainable forest products. Pointing out that sustainable forest management (SFM) is complex and will have to deal with social, environmental and economic dimensions, he agreed that progress can only be achieved and endured if all the stakeholders are able to strike a balance between the various needs. Dr. Freezailah observed that serious interest has been indicated by India, Japan, Myanmar, the Philippines, Turkey and others looking to follow the examples set by China, Indonesia and Malaysia, countries that are already part of the PEFC family.

The Dialogue was divided into four sessions, which examined the subject matter in greater detail. Session 1 dealt with *Regional Perspectives: Forest Resources, Sector Developments & Sustainability Trends*; session 2 on *Value Chain Discussions: Contrasting perspectives between actors in the chain*; session 3 on *Influencing Forest Industry Transformation: Sustainability initiatives across the region*; while session 4 highlighted *Forest Certification Organizations in Asia*.

Throughout the first day, participants, panelists and speakers discussed the important issues of linking sustainable forest product supply chains through Asia, looking at bottlenecks in supply chains and the next steps to be taken. A key message raised by several participants was the need to increase demand for certified products in the Asian and Middle Eastern markets. As markets in Europe and the USA decline, companies are increasingly trading with Asian and Middle Eastern markets, where there is currently no or limited demand for certified products. There was also a call on PEFC to raise awareness, and therefore the demand, for certified products in this region. With rubberwood being an extremely important source of material for the wood-based industries in Malaysia and the wider Asia region, both speakers and participants also called on the PEFC to start certifying this material. There was also substantial discussion on the topic of legality. Many of the participants observed that the rise of legality regulations globally risks moving the focus from sustainability towards the very different concept of legality. However, some others believed that the forest industry should never give up on sustainable forest management and independent third party certification that provides assurance of sustainability and legality.

The second day saw a number of side events organised which were designed to enable more in-depth exchange between the participants attending the Dialogue. Under the banner of Advancing Sustainable Trade in Asia, a number of organisations took the opportunity to present their work and engage with stakeholders in side events on key forestry-related issues, which included the following:

- *Update on Proposed Changes to United States Formaldehyde Standards for Composite Wood – CARB & EPA*, hosted by International Wood Products Association (IWPA) & APP Timber
- *Common Legality Framework for Assessing Legality of Forestry Operations, Timber Processing and Trade*, hosted by TRAFFIC
- *Practitioners' Workshop: Developing National Certification Systems*, hosted by PEFC International
- *Plantation Forests: Distinct Approaches and Trends*, hosted by the Brazilian Pulp and Paper Association – Bracelpa
- *Increasing the Commitment of Private Forest Owners to PEFC*, hosted by IFFA & PEFC Germany

## PEFC FOREST CERTIFICATION WEEK



Participants at 4<sup>th</sup> PEFC Stakeholder Dialogue

- *FLEGT & Certification – Building more Synergies*, hosted by the European Forest Institute (EFI)
- *Agroforestry & Smallholder Certification: Innovation in Asia*, hosted by Bureau Veritas Certification Singapore & PEFC International
- *Cross Laminated Timber: Providing Opportunities for PEFC Project Certification*, hosted by PEFC UK

The highlight of the day was the international launching of the new PEFC's *Toolkit for Developing a National Forest Certification System* by PEFC International, which is a step-by-step guide to establishing national forest certification systems aligned with PEFC's globally recognised sustainability benchmark requirements.

PEFC members were also taken on a field trip to a PEFC-certified forest area where some 80 participants had the opportunity to witness the implementation of sustainable forest management practices in the Pahang FMU during the visit to active logging and regenerated forest sites in the Jerantut Forest Reserve. The participants concluded their trip with an overnight stay at the Taman Negara (National Park) where they experienced the adventure of a night jungle walk, saw the crowns of tropical forest trees from a different perspective while taking the canopy walk and interacted with the Batak community while visiting an Orang Asli settlement along the Tembeling River.



# COOPERATION





## COOPERATION

### Twelfth Meeting of the Working Group on a Pan ASEAN Timber Certification Initiative



*The Working Group in session*

Malaysia was given the privilege of hosting the 12<sup>th</sup> Meeting of the Working Group on a Pan ASEAN Timber Certification Initiative (WG-PATCI) which was held in Kuala Terengganu on 24-25 June. This was the second time Malaysia hosted the WG-PATCI since its inception meeting in 2002. The meeting was attended by delegates from six ASEAN Member States, namely Indonesia, Lao PDR, Malaysia, Philippines, Thailand and Vietnam. The meeting was also attended by representatives from the ASEAN Secretariat, the European Forest Initiative (EFI) FLEGT Asia and the ASEAN-German Programme on Response to Climate Change (GAP-CC).

The meeting was hosted by the Ministry of Plantation Industries and Commodities (MPIC) with the assistance of MTCC. The Malaysian delegation comprised of representatives from MPIC, Ministry of Natural Resources and Environment (MNRE), Malaysian Timber Industry Board (MTIB), Forestry Department Peninsular Malaysia (FDPM), Sarawak Forest Department (SFD), Sarawak Timber Industry Development Corporation (STIDC), Sarawak Forestry Corporation (SFC), MTC, MTCC, Persatuan Forum Industri Perakayuan Malaysia, Sarawak Timber Association (STA) and the Protem Secretariat Malaysia-EU FLEGT VPA. The meeting was chaired by Dato' Dr. Freezailah Che Yeom with Ms. Fe C. Oliveros from the Philippines as the vice-chair.

Amongst matters discussed at the meeting included the progress update on the status of application of the Criteria and Indicators for legality of timber and/or forest management certification, and the implementation of timber certification in the ASEAN Member States. The meeting also exchanged information and experiences from Indonesia, Lao PDR, Malaysia and Thailand on the negotiations with the EU on a FLEGT VPA. In addition, Indonesia, Malaysia and Thailand exchanged information on the Lacey Act and its impact on exports of timber products to USA.

The meeting further discussed the status of the *Stock Taking Study* on existing initiatives for ensuring legal and sustainable timber in ASEAN and agreed that the study should be conducted to provide analytical views on the state of preparedness of the ASEAN Member States to trade in legal and sustainable timber by 2015.

## COOPERATION

With regard to the progress of the *Study on Timber Trade, Customs and Timber Legality*, the meeting noted that the ASEAN VPA countries' legality verification processes were under development and that the issuance of FLEGT licenses could be readily integrated into the customs export permitting systems of these countries. The meeting took note that the study was conducted to harmonise the existing customs systems and discussed ways to improve documentation and communication of legal timber trade amongst the ASEAN Member States. The meeting further noted that the *ITTO Principles and Guidelines for the Sustainable Management of Natural Tropical Forests* were undergoing a review process.



*The delegates visiting a PEFC-certified mill, Bormill Wood (Terengganu) Sdn. Bhd.*

As the host, MTCC also organised a field visit to the Jengai Forest Reserve in the Terengganu FMU to showcase forest management activities in a certified forest. Participants of the meeting observed sustainable forest management practices in an active logging area, a regenerated forest as well as a high conservation value forest (HCVF) area. The participants were also brought to visit a certified mill [Bormill Wood (Terengganu) Sdn. Bhd] to observe the requirements necessary in obtaining PEFC chain of custody certification under the MTCS.



*Group picture of the delegates in Jengai Forest Reserve in Terengganu FMU*



## OTHER ACTIVITIES



Rob Shaw (third from left) from the Scottish Woodlands and Sarah Price (second from left) from PEFC International visiting the project site



Siti Syaliza introducing Sarah Price to the participants



Briefing session in progress

### Pilot Study on Group Certification of Rubber Smallholdings under MTCS

This project, which is led by Malaysian Timber Industry Board (MTIB) in collaboration with the Malaysian Rubber Board, Federal Land Development Authority (FELDA), Rubber Smallholders Development Authority (RISDA), Federal Land Consolidation and Rehabilitation Authority (FELCRA), Malaysian Timber Council (MTC), MTCC and the Malaysian Furniture Promotion Council (MFPC), aims to explore the feasibility of implementing group certification of rubber smallholdings under the MTCS.

The feasibility of group certification is explored to take into consideration that rubberwood is mainly harvested from smallholdings with an average area ranging from 1.5 ha to 3.0 ha which render them uneconomic to undergo individual certification. Rubberwood is the main source of timber for the manufacture of furnitures and there is an increasing demand for timber products to be certified for sustainability, including furniture.

Throughout the year, the Project Technical Committee (PTC) met three times on 16 April, 13 June and 23 December to provide technical advice to the project consultant, as well as to ensure the timely implementation of the various project activities. In view of the delay in the appointment of the project consultant as well as difficulties faced in coordinating the rubber smallholdings, the PTC meeting held on 13 June proposed the extension of the project from August 2013 to April 2014. The proposal was approved by the Project Steering Committee (PSC) at its meeting held on 1 July. The second meeting of the PSC held on 30 December also agreed to scale down the project from the original extent of 1,257.2 ha covering 361 smallholders to 711.64 ha covering only 120 smallholders.

During the year, three briefing sessions were conducted on 16 January, 3 July and 19 November to update and raise awareness of the smallholders regarding the project, as well as to seek their full cooperation in its implementation. The briefing session on 19 November also saw the participation of Rob Shaw from the Scottish Woodlands and Sarah Price from PEFC International. Their participation was supported by PEFC International as part of its *Project on Expanding Group Certification Globally* to provide technical input and share practical experience in group certification, besides providing encouragement to the smallholders participating in the project.

### Capacity Building for Compliance with Requirements for Chain of Custody Certification under MTCS

On request by the Malaysian Timber Industry Board (MTIB), the project entitled *Capacity Building for Compliance with Requirements for Chain of Custody Certification under MTCS* which was supposed to end in August 2013 was extended to December 2015.

To provide a better understanding in the usage of the PEFC CoC technical documents under this project, MTCC participated in the four briefing sessions that were conducted by MTIB on 22 February in Penang, 14 March in Kuala Lumpur, 21 March in Kuala Terengganu and 23 April in Muar.

By the end of 2013, 25 companies that had participated in this project were successful in obtaining the PEFC *Certificate for Chain of Custody* under the MTCS.



Hamarinder Singh making a presentation at one of the briefing sessions



# SIGNIFICANT EVENTS





## SIGNIFICANT EVENTS

MTCC organised/coordinated the following local events in 2013:

Local Events	Date	Venue
Meeting with the relevant government agencies in Peninsular Malaysia to elect a Member and an Alternate Member for the SRC for the review of MC&I(Forest Plantations)	1 April	Kuala Lumpur
Technical training course for PEFC ST 2003:2012 organised by Department of Standards Malaysia	3 April	Kuala Lumpur
Meeting with the relevant government agencies and social stakeholder group (indigenous peoples) in Sarawak to elect a Member and an Alternate Member for the SRC for the review of MC&I(Forest Plantations)	10 April	Kuching
Meeting with the relevant government agencies and economic stakeholder group in Sabah to elect a Member and an Alternate Member for the SRC for the review of MC&I(Forest Plantations)	11 April	Kota Kinabalu
Trial run by Forestry Department Peninsular Malaysia (FDPM) on use of MC&I (Forest Plantations) in Kemansul Forest Plantation, Pahang	15 – 16 April	Pahang
Briefing on MC&I(Natural Forest) and MC&I(Forest Plantations) to Yayasan Sabah	21 May	Kota Kinabalu
Briefing to HeveaBoard Sdn. Bhd. on MTCS and PEFC Certification	13 June	Melaka
Meeting with the social stakeholder group (indigenous peoples) Peninsular Malaysia to elect a Member and an Alternate Member for the SRC for review of MC&I(Forest Plantations)	8 July	Kuala Lumpur
First Meeting of the Standards Review Committee (SRC) for review of MC&I (Forest Plantations)	26-28 August	Kuala Lumpur
Briefing session on Pilot Study on Group Certification of Rubber Smallholdings under the MTCS involving PEFC representative	19 November	Gemencheh
Briefing on Revised PEFC CoC Standard	21 November	Kuala Lumpur
	25 November	Ipoh
	27 November	Kuantan
	18 December	Sibu
	19 December	Kota Kinabalu
Training for Auditors on MC&I(Natural Forest) and MC&I(Forest Plantations)	1-5 December	Alor Setar

## SIGNIFICANT EVENTS

**MTCC Chairman Receives MTIB Lifetime Achievement Award and Chinese Friendship Award**

Last year, MTCC Chairman, Y. Bhg. Dato' Dr. Freezailah Che Yeom has been awarded two prestigious awards for his contribution and commitment towards the timber industry.



Dato' Dr. Freezailah received a Lifetime Achievement Award from MTIB during the MTIB 40<sup>th</sup> Anniversary held on 4 June 2013 at the Sunway Putra Hotel. The award recognizes the achievement and contributions of Dato' Freezailah towards the country's socioeconomic development as well as his commitments toward developing the Malaysian timber industry. The award was presented by YAB Tan Sri Muhyiddin Yassin, the Deputy Prime Minister of Malaysia.

He also received an internationally recognised award, the 2013 People's Republic of China Friendship Award — the Chinese government's highest honor for foreigners who have made exceptional contributions to China's "economic and social progress" on 29 September 2013. The award which is in the form of a Certificate and a Medal was presented by Vice-Premier Mr. Ma Kai.

Dato' Dr. Freezailah was recognised for helping China with several international cooperation projects on tropical forest management in Hainan and Yunnan provinces. As one of the 50 recipients from 20 countries receiving the award, this award has been one of the most significant achievements for Dato' Dr. Freezailah.





## SIGNIFICANT EVENTS

MTCC held discussions with the following visitors in 2013:

Visitors	Date
Tanzina Rahman, Perception Management International, Kuala Lumpur	17 January
Yuki Sakamoto and Takayuki Nakatsuka, Global Environmental Forum, Japan Miho Sagara, Institute for Global Environmental Strategies, Japan	21 January
Nigel Haigh, Finewood Malaysia	4 March
Richard Muller Thila and Jeus B Rasmussen Linus Didvalis, Ph.D candidate, International Christian University, Japan	11 March
Coen van der Veer, Global Woods Forestry Coalition – Building and Wood Workers’ International (BWI), Switzerland Iravaty Argarini, Building and Wood Workers’ International (BWI) – Asia Pacific, Malaysia	14 March
Roberto Bonse, STCP Engenharia de Projetos Ltda., Brazil	22 May
Delegation from People’s Republic of China: <ul style="list-style-type: none"> <li>• Ms. Jin Aixian, Division Chief, Department of Forest Resource Management, State Forestry Administration (SFA)</li> <li>• Mr. Jing Tao, Deputy Division Chief, Department of Planning and Finance, SFA</li> <li>• Mr. Wu Hao, Project Officer, International Forestry Cooperation Center, SFA</li> <li>• Ms. Liu Jun, Project Officer, Department of Foreign Trade, Ministry of Commerce (MOFCOM)</li> <li>• Mr. Chen Yong, Associate Professor, Research Institute of Forestry Policy and information, Chinese Academy of Forestry (CAF)</li> <li>• Ms. Chen Yujie, Project Officer/Translator, Research Institute of Forestry Policy and information, CAF</li> <li>• Dr. Chen Xiaoqian, EFI FLEGT Adviser</li> </ul>	18 June
Dato’ Sri Douglas Uggah Embas, Minister of Plantation Industries and Commodities	30 July
Visitors from Korea Forestry Promotion Institute: <ul style="list-style-type: none"> <li>• Juwon Shin, WOORIMNR Co., Ltd., EcoServices Consulting Co. Ltd., Seoul</li> <li>• Sang Hyun Choi, Kangwon National University</li> <li>• Elini Misnah Odzlan, Universiti Putra Malaysia</li> </ul>	30 July
Guiseppe LaCandia (International Business Analyst), Asia Business Channel Jennifer Jendusa (Program Coordinator), Asia Business Channel	4 September
Anushia Kandasivam (Senior Writer), New Straits Times	9 September
Ir. Thirukumaran Jallendran, Land Lease Mann Young, Land Lease Ivie Sim, Land Lease Dr. Tan Yu Eng, Forest Research Institute Malaysia	4 October

## SIGNIFICANT EVENTS

**Newly appointed Minister of Plantation Industries and Commodities Malaysia visits MTCC office**

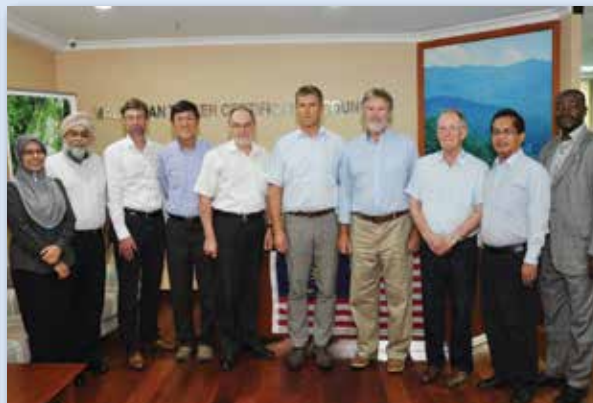
MTCC was honored to receive YB Dato Sri Douglas Uggah Embas, the newly appointed Minister of Plantation Industries and Commodities when he and his delegation visited the MTCC office on 30 July 2013.

YB Minister was welcomed by MTCC Chairman Dato' Dr. Freezailah Che Yeom and CEO Yong Teng Koon. Yong briefed the Minister on the set up of MTCC, its main activities and the operation of the MTCS. The presentation also covered the rationale for implementing timber certification in the country, latest updates and upcoming activities of the scheme, issues and challenges in operating the scheme and strategies to address the issues and challenges. YB Minister was presented with a set of MTCC publications as a token of appreciation.

MTCC participated in the following international events in 2013:

International Conferences/Seminars/Workshops/ Meetings	Date	Venue
3 <sup>rd</sup> Meeting of Asia Pacific Economic Cooperation Experts Group on Illegal Logging and Associated Trade (EGILAT)	29 - 31 January	Jakarta, Indonesia
12 <sup>th</sup> Meeting of the Working Group on a Pan ASEAN Timber Certification Initiative	24 - 25 June	Kuala Terengganu
14 <sup>th</sup> Seminar on Current International Issues Affecting Forestry and Forest Products	4 July	Bandar Seri Begawan, Brunei
16 <sup>th</sup> Meeting of the ASEAN Senior Officials of Forestry (ASOF)	5 - 6 July	Bandar Seri Begawan, Brunei
2 <sup>nd</sup> APEC Meeting of Ministers Responsible for Forestry	14 - 16 August	Cusco, Peru
PEFC Working Group on Sustainable Forest Management in Tropical Forests	17 - 19 September	Kuala Lumpur
PEFC Chain of Custody and Labelling Working Group Meeting	24 September	Madrid, Spain
PEFC Certification Week	11 - 15 November	Kuala Lumpur
World Adhesives 2013 Conference	21 - 22 November	Kuala Lumpur
49 <sup>th</sup> Session of the International Tropical Timber Council and Associated Sessions of the Committees	25 - 30 November	Libreville, Gabon
BWI Wood & Forestry Conference	28 - 29 November	Yangon, Myanmar

## SIGNIFICANT EVENTS

**PEFC Working Group on Sustainable Forest Management in Tropical Forests**

MTCC co-organised the meeting on the *PEFC Working Group on Sustainable Forest Management in Tropical Forests* with the PEFC Council which was held in Kuala Lumpur on 17-19 September. The Working Group has been tasked to review the draft *Appendix 2 – Additional interpretation and requirements for tropical natural forests* to the PEFC ST 1003:2010 meta standard and to develop an alternative solution addressing risk elements common to tropical forests.

The Working Group meeting was attended by 8 members representing a range of stakeholder interests and expertise required to consider this matter. As a result of the Working Group meeting, a revised draft Appendix 2 was formulated.

MTCC participated in the following events within Malaysia in 2013:

Local Conferences/Seminars/Workshops/Meetings	Date	Venue
Malaysian Timber Dialogue on Implementation of Minimum Labours' Wage and Levy, organised by Malaysian Timber Industry Board (MTIB)	10 January	Kuala Lumpur
Certification Workshop 2013 – Responsible Procurement and Purchasing in Asia: <i>Compliance with Requirements for Paper and Other Forestry Product</i> , organised by Malaysian Timber Council (MTC)*	25 January	Kuala Lumpur
Workshop on REDD+ Research Project, organised by Forest Research Institute Malaysia (FRIM)	4 February	Kuala Lumpur
Klinik Malaysia Government Portals and Websites Assessment (MGPWA) 2012	5 February	Port Dickson
Briefing to Implementing Agencies on "Trial Run" and "Compliance Audit" for TLAS Implementation in Peninsular Malaysia	18 February	Kuala Lumpur
Private Sector Engagement in REDD+, organised by United Nations Development Programme (UNDP) and Ministry of Natural Resources and Environment (NRE)	19 February	Kuala Lumpur
Malaysia's REDD+ Readiness Project National Stakeholder Consultation, organised by UNDP and NRE	20-21 February	Kuala Lumpur



## SIGNIFICANT EVENTS

Local Conferences/Seminars/Workshops/Meetings	Date	Venue
Conference on Perak's Central Forest Spine: The Offing of the State's Biodiversity Bastion, organised by the Perak State Government	19 February	Ipoh
Industry Briefing on Capacity Building for Compliance with Requirements for Certification under MTCS, organised by MTIB*	22 February	Penang
National Conference on Environment, organised by Transparency International Malaysia (TI-M)	27-28 February	Kuala Lumpur
IRIM-MSPC Seminar on Liberalization of Forestry and Environmental Services in Malaysia	12 March	Kuala Lumpur
Industry Briefing on Capacity Building for Compliance with Requirements for Certification under MTCS, organised by MTIB*	14 March	Kuala Lumpur
Industry Briefing on Capacity Building for Compliance with Requirements for Certification under MTCS, organised by MTIB*	21 March	Kuala Terengganu
International Forestry Day Celebration, organised by FDPM	21 March	Pekan
11 <sup>th</sup> Stakeholder Consultation on FLEGT VPA	28 March	Kuala Lumpur
GBI Seminar Session II, organised by Green Building Index (GBI)	15 April	Kuala Lumpur
Environmental Seminar: Malaysian Elephant Conservation	23 April	Kuala Lumpur
Industry Briefing on Capacity Building for Compliance with Requirements for Certification under MTCS, organised by MTIB*	23 April	Muar
GBI Seminar Session III, organised by GBI	29 April	Kuala Lumpur
Workshop on Development of Strategic Action Plan for MyHijau Programme, organised by Malaysia Green Technology Corporation (MGTC)	29 April	Kuala Lumpur
Dialogue with wood furniture industry on FLEGT VPA	5 June	Kuala Lumpur
IRIM Executive Talk*	20 June	Kuala Lumpur
The Southeast ASEAN Water Challenges Programme – Water Lab with Stakeholder	26 June	Kuala Lumpur
Briefing session on Australian Illegal Logging Prohibition Act	4 July	Kuala Lumpur
Briefing to the Industry on the Latest Development of Trans Pacific Negotiation	9 July	Kuala Lumpur
National Tiger Conservation Action Plan (2008-2020) Stakeholders Meeting No. 1/2013	9 July	Putrajaya
Stakeholder consultation workshop – UNDP/GEF/GOM: Project document for improving connectivity in the central forest spine landscapes (IC-CFS)	19 July	Kuala Lumpur
Expert discussion on land capability classification	24 July	Kuala Lumpur
Scenario Building and Analysis Workshops – ICT & Forestry	20 August	Putrajaya
Commodity Industry Consultation Session 2013 (Timber Session)	3 September	Kuala Lumpur

## SIGNIFICANT EVENTS

Local Conferences/Seminars/Workshops/Meetings	Date	Venue
MTC Timber Talk	10 September	Kuala Lumpur
First Draft of the National Forestry Policy 2013 Consultation Workshop	7-9 October	Seremban
National Standards Compliance Programme (NSCP) Mini Lab	8 October	Putrajaya
Green Technology Foresight 2030 – Scenario Analysis Workshop (Forestry Sector)	17 October	Cyberjaya
2 <sup>nd</sup> International Timber Marketing Conference	24 October	Serdang
Executive Talk on Kenaf Market Outlooks and Way Forward for Kenaf Industries in Malaysia	25 October	Serdang
Malaysia WSD Debate Series – Malaysian Standards and CA create positive changes to social, environment and economic sustainability	29 October	Kuala Lumpur
Corporate Integrity Pledge (CIP) Implementation Briefing	30 October	Putrajaya
Lecture to students of School of International Forestry, UMS*	22 November	Kota Kinabalu
Conference on Current Southeast Asia Forestry and Mining Issues	27-28 November	Kuala Lumpur
Consultation on Draft Foresters Bill	28 November	Kuala Lumpur
REDD + Readiness Project Closing Workshop in Malaysia	2 December	Kuala Lumpur
MPIC Eleventh Malaysia Plan Planning Workshop	5-7 December	Putrajaya

\* MTCC made a presentation on the MTCS and related activities at the event

MTCC participated in the following fairs/exhibitions in 2013:

Fairs/Exhibitions	Date	Venue
Ecobuild 2013	5-7 March	London, UK
Export Furniture Exhibition (EFE)	6-10 March	Serdang
Sarawak Grand Timber Expo & Conference 2013 & Sarawak Small and Medium Enterprises' Expo 2013	7-10 June	Kuching
SPOGA	8-10 September	Cologne, Germany
Timber Expo 2013	24-25 September	Birmingham, UK
International Greentech and Eco Products Exhibition Malaysia (IGEM)	10-13 October	Kuala Lumpur
Malaysia International Commodity Conference & Showcase (MICCOS)	24-27 October	Serdang
German Timber Day	29-30 October	Cologne, Germany

# FINANCIAL STATEMENTS

RM



# FINANCIAL STATEMENTS

## STATEMENT OF FINANCIAL POSITION AS AT 31 DECEMBER 2013

	2013 RM	2012 RM
<b>ASSETS</b>		
<b>Non-current asset</b>		
Property, plant and equipment	2,603,449	2,695,551
<b>Current assets</b>		
Trade receivables	20,283	21,182
Sundry receivables and deposits	328,706	220,220
Short term investments	67,579,809	77,414,789
Deposits	19,732,638	10,151,749
Cash and bank balances	301,579	1,191,658
<b>Total current assets</b>	87,963,015	88,999,598
<b>TOTAL ASSETS</b>	<b>90,566,464</b>	<b>91,695,149</b>
Endowment fund	84,000,000	84,000,000
Accumulated fund	6,357,279	7,452,918
<b>Total equity</b>	90,357,279	91,452,918
<b>Current liabilities</b>		
Sundry payables and accruals	190,197	222,704
Current tax liability	18,988	19,527
<b>Total liabilities</b>	209,185	242,2319
<b>TOTAL EQUITY AND LIABILITIES</b>	<b>90,566,464</b>	<b>91,695,149</b>

## FINANCIAL STATEMENTS

STATEMENT OF PROFIT OR LOSS AND OTHER COMPREHENSIVE INCOME  
FOR THE YEAR ENDED 31 DECEMBER 2013

	2013 RM	2012 RM
Revenue	92,880	63,980
Direct costs	(1,051,174)	(464,342)
Gross loss	(958,294)	(400,362)
Other income	3,030,123	5,050,983
Administrative and general expenses	(3,167,468)	(3,007,459)
Surplus before tax	(1,095,639)	1,643,162
Tax expense	-	(1,283)
<b>SURPLUS FOR THE YEAR</b>	<b>(1,095,639)</b>	<b>1,641,879</b>
Other comprehensive income for the year, net of tax	-	-
Total comprehensive income for the year	<b>(1,095,639)</b>	<b>1,641,879</b>

## APPENDIX I

### PEFC Chain of Custody Certificate Holders

No.	Company	Certificate Number [Logo Usage Licence No.]	Date of Issuance of Certificate	Scope of Certification
1	Ta Ann Plywood Sdn. Bhd.	CEF0606A [PEFC/01-31-20]	21-Aug-06	Manufacture of plywood, veneer, LVL and wood based construction material
2	Antalis (Malaysia) Sdn. Bhd.	SGS-PEFC/COC-0566 [PEFC/01-31-99]	1-Aug-08	Purchase & sale of PEFC-certified paper & paper board
3	Times Offset (Malaysia) Sdn. Bhd.	SGS-PEFC/COC-0593 [PEFC/01-31-94]	17-Aug-08	Purchase of PEFC-certified paper and paper board, process and sale of PEFC-certified books, magazines and printed matter printing
4	Jinmei Industrial Sdn. Bhd.	SGS-PEFC/COC-0933 [PEFC/34-31-114]	7-Jul-09	Purchase of PEFC-certified paper rolls and semi-finished paper sheets. Processing sale of PEFC-certified tissue paper, diary & stationeries products
5	Syarikat Kayu-Kayan Baoli Sdn. Bhd.	SGS-MTCS/COC-0039 [MTCC/31-046]	10-Mar-12	Purchase of MTCS-certified logs, sawmilling and sale of MTCS-certified sawn timber
6	Lengkap Arif Sdn. Bhd.	FCOC 003 [MTCC/31-025]	23-Jan-12	Manufacture of sawn timber
7	Besgrade Products Sdn. Bhd.	FCOC 004 [MTCC/31-019] [PEFC/34-31-019]	23-Jan-12	Manufacture of plywood
8	Yee Poh Timber Sdn. Bhd.	FCOC 005 [MTCC/31-018] [PEFC/34-31-018]	23-Jan-12	Trading of sawn timber
9	Tandem Holdings Sdn. Bhd.	SIRIM-COC 0006 [PEFC/34-31-088]	20-Feb-12	Purchase of PEFC-certified sawn timber, manufacture and export of PEFC-certified solid wood joinery and mouldings, and housing components
10	Euro Asia Timber Export Sdn. Bhd.	FCOC 007 [MTCC/31-026] [PEFC/34-31-026]	27-Feb-12	Manufacture of sawn timber, solid wood mouldings, laminated and finger-jointed timber
11	Kilang Papan Datuk Wan Ahmad (Raub) Sdn. Bhd.	SIRIM-COC 0009 [MTCC/31-031] [PEFC/34-31-031]	27-Mar-12	Purchase of PEFC-certified log, manufacture and export of PEFC-certified sawn timber and solid wood moulding
12	Maju Weko Timber Industries Sdn. Bhd.	SIRIM-COC 0010 [MTCC/31-044] [PEFC/34-31-044]	29-Apr-12	Manufacture of sawn timber, solid wood mouldings, laminated and finger-jointed timber
13	Golden Latitude Sdn. Bhd.	FCOC 011 [MTCC/31-057] [PEFC/34-31-057]	17-Jul-12	Purchase PEFC-certified sawn timber, manufacture and export of PEFC-certified sawn timber, solid wood moulding
14	Firmwood Sdn. Bhd.	SIRIM-COC 0012 [MTCC/31-075] [PEFC/34-31-075]	17-Jul-12	Purchase and sale of PEFC-certified sawn timber
15	Dyera - Tim Sdn. Bhd.	FCOC 028 [MTCC/31-074] [PEFC/34-31-074]	23-Oct-12	Export of sawn timber and solid wood moulding
16	MTME Point Sdn. Bhd.	FCOC 030 [MTCC/31-080]	6-Nov-12	Manufacture and export of sawn timber



## APPENDIX I

No.	Company	Certificate Number [Logo Usage Licence No.]	Date of Issuance of Certificate	Scope of Certification
17	Kilang Papan Low Fat Sdn. Bhd.	SIRIM-COC 0022 [MTCC/31-078] [PEFC/34-31-078]	27-Aug-12	Purchase PEFC-certified log, manufacture and export of PEFC-certified sawn timber
18	Low Fatt Wood Industries Sdn. Bhd.	SIRIM-COC 0023 [MTCC/31-079] [PEFC/34-31-079]	27-Aug-12	Purchase PEFC-certified sawn timber, manufacture and export of PEFC-certified sawn timber, timber mouldings, finger-jointed timber, laminated scantling and furniture
19	Gunung Seraya Wood Products Sdn. Bhd.	SIRIM-COC 0016 [MTCC/31-072] [PEFC/34-31-072]	7-Aug-12	Purchase and sale of PEFC-certified sawn timber and manufacture and export of PEFC-certified timber, solid wood mouldings, finger-jointed timber and laminated timber
20	Kompleks Perkayuan Kelantan Sdn. Bhd.	FCOC 032 [MTCC/31-085]	25-Nov-12	Manufacture and sale of sawn timber, solid wood moulding and finger-jointed timber
21	Asia Plywood Company Sdn. Bhd.	SIRIM-COC 0014 [MTCC/31-050] [PEFC/34-31-050]	6-Aug-12	Manufacture and export of plywood
22	Pesama Timber Corporation Sdn. Bhd.	FCOC 015	7-Aug-12	Manufacture and export of sawn timber, solid wood mouldings (including finger-jointed mouldings) and furniture
23	Vin-Forest Industries Sdn. Bhd.	SIRIM-COC 0017 [MTCC/31-083] [PEFC/34-31-083]	14-Aug-12	Purchase of PEFC-certified sawn timber, manufacture and export of PEFC-certified S4S, solid wood mouldings and door
24	Guan Hin Sawmill & Hardware Sdn. Bhd.	SIRIM-COC 0018	14-Aug-12	Purchasing of PEFC-certified logs, manufacture and sale of PEFC-certified sawn timber
25	Kim Teck Lee Timber and Flooring Sdn. Bhd.	FCOC 019 [PEFC/34-31-097]	20-Aug-12	Manufacture and export of pre finished solid wood flooring
26	Sim Seng Huat Timber Industries Sdn. Bhd.	FCOC 026 [MTCC/31-106] [PEFC/34-31-106]	9-Sept-12	Trading of sawn timber, manufacture and export of solid wood, finger-jointed and laminated wood moulding
27	Arah Asia Sdn. Bhd.	SIRIM-COC 0027 [PEFC/34-31-123]	23-Oct-12	Purchase of PEFC-certified logs, manufacture and sale of PEFC-certified sawn timber
28	Global Wood Products Sdn. Bhd.	SGS-MTCS/COC-0001 [MTCC/31-005] [PEFC/34-31-005]	20-Oct-11	Purchase of PEFC-certified sawn timber, processing and sale of PEFC-certified moulding products and customized timber profiles and garden furniture
29	Pan Resources Sdn. Bhd.	SGS-MTCS/COC-0002 [MTCC/31-001] [PEFC/34-31-001]	24-Sept-11	Purchase and sale of PEFC-certified sawn timber
30	Jimwood Sdn. Bhd.	SGS-MTCS/COC-0003 [MTCC/31-003] [PEFC/34-31-003]	1-Nov-11	Purchase, outsource kiln drying and sale of PEFC-certified sawn timber
31	Jasa Harapan Sdn. Bhd.	SGS-MTCS/COC-0004 [MTCC/31-014]	24-Sept-11	Purchase of MTCS-certified sawn timber, manufacture and sale of MTCS-certified S4S timber and moulding products
32	Perkayuan Semhing Sdn. Bhd.	SGS-MTCS/COC-0005 [MTCC/31-015]	24-Sept-11	Purchase of PEFC-certified logs, sawmilling and sale of PEFC-certified sawn timber
33	Medan Agresif Sdn. Bhd.	SGS-MTCS/COC-0006 [MTCC/31-037] [PEFC/34-31-037]	2-Nov-2011	Purchase of PEFC-certified logs, processing and sale of PEFC-certified sawn timber

## APPENDIX I

No.	Company	Certificate Number [Logo Usage Licence No.]	Date of Issuance of Certificate	Scope of Certification
34	Hian Yoon Timber Industries Sdn. Bhd.	SGS-MTCS/COC-0009 [MTCC/31-012]	16-Oct-11	Purchase of PEFC-certified logs, processing and sale of PEFC-certified sawn timber
35	Costraco Sdn. Bhd.	SGS-MTCS/COC-0010 [MTCC/31-008] [PEFC/34-31-008]	3-Nov-11	Purchase of PEFC-certified sawn timber, outsource kiln-drying, processing and sale of PEFC-certified sawn timber, solid finger-jointed and laminated finger-jointed beam, solid laminated scantlings and finger-jointed laminated scantling boards, moulding products and decking
36	Euro-CGA Sdn. Bhd.	SGS-MTCS/COC-0011 [MTCC/31-009] [PEFC/34-31-009]	15-Nov-11	Purchase of PEFC-certified sawn timber, outsource kiln drying, processing and sale of PEFC-certified solid and laminated finger-jointed beams, moulding products, deckings and laminated scantling boards
37	Straits Timber Products (Pahang) Sdn. Bhd.	SGS-MTCS/COC-0012 [MTCC/31-006] [PEFC/34-31-006]	17-Nov-11	Purchase of PEFC-certified sawn timber, manufacture and sale of PEFC-certified moulding products
38	Straits Timber Products Sdn. Bhd.	SGS-MTCS/COC-0013 [MTCC/31-007] [PEFC/34-31-007]	1-Dec-11	Purchase of PEFC-certified sawn timber, outsourced kiln drying, manufacture and sale of PEFC solid wood moulding products
39	Poh Huat Furniture Industries (M) Sdn. Bhd.	SGS-MTCS/COC-0015 [MTCC/31-016] [PEFC/34-31-016]	26-Dec-12	Purchase of PEFC-certified particleboard, fabricate and sale of PEFC-certified office furniture products
40	Pekan Sawmill Sdn. Bhd.	SGS-MTCS/COC-0016 [MTCC/31-011]	2-Dec-11	Purchase of PEFC-certified logs, sawmilling and sale of PEFC-certified sawn timber
41	Perak Industrial Corporation Sdn. Bhd.	SGS-MTCS/COC-0017 [MTCC/31-021] [PEFC/34-31-021]	30-Dec-12	Purchase of MTCS-certified logs, sawmilling and sale of MTCS-certified sawn timber
42	Maran Road Sawmill Sdn. Bhd.	SGS-MTCS/COC-0019 [MTCC/31-010] [PEFC/34-31-010]	6-Jan-12	Purchase of certified logs and sawn timber, sawmilling, manufacture and sale of certified logs, sawn timber, moulded timber, and laminated finger-jointed products
43	Kim Ban Huat Sdn. Bhd.	SGS-MTCS/COC-0020 [MTCC/31-039] [PEFC/34-31-039]	5-Mar-12	Purchase of PEFC-certified logs, sawmilling and sale of PEFC-certified sawn timber
44	Lionex (M) Sdn. Bhd.	SGS-MTCS/COC-0021 [MTCC/31-022] [PEFC/34-31-022]	13-Jan-12	Trading of MTCS-certified sawn timber and moulding products
45	Mahawangsa Timber Industries Sdn. Bhd.	SGS-MTCS/COC-0024 [MTCC/31-034]	3-Feb-12	Purchase of PEFC-certified logs, sawmilling and sale of PEFC-certified sawn timber and sawmill waste
46	Lionvest Timber Industries Sdn. Bhd.	SGS-MTCS/COC-0025	3-Feb-12	Purchase of PEFC-certified logs, sawmilling and sale of PEFC-certified sawn timber
47	Standard Wood Products Sdn. Bhd.	SGS-MTCS/COC-0026 [MTCC/31-027] [PEFC/34-31-027]	3-Feb-12	Purchase of certified sawn timber, manufacture and sale of moulding products and furniture components
48	Blue Star Sawmill Sdn. Bhd.	SGS-MTCS/COC-0036 [MTCC/31-032] [PEFC/34-31-032]	26-Feb-12	Purchase of PEFC-certified logs, processing and sale of PEFC-certified sawn timber
49	Mentakab Sawmill Sdn. Bhd.	SGS-MTCS/COC-0040 [MTCC/31-029] [PEFC/34-31-029]	18-Mar-12	Purchase of PEFC-certified logs, processing and sale of PEFC-certified sawn timber
50	Wood Village Industries Sdn. Bhd.	SGS-MTCS/COC-0041 [MTCC/31-045] [PEFC/34-31-045]	18-Mar-12	Purchase of certified sawn timber, manufacture and sale of MTCS-certified finger jointed, laminated finger jointed timber, furniture components, moulding products and indoor and outdoor furniture products

## APPENDIX I

No.	Company	Certificate Number [Logo Usage Licence No.]	Date of Issuance of Certificate	Scope of Certification
51	Chye Hin Sawmill Sdn. Bhd.	SGS-MTCS/COC-0052	5-June-12	Purchase of certified logs, sawmilling and sale of MTCS-certified sawn timber
52	Jerteh Timber Enterprise Sdn. Bhd.	SGS-MTCS/COC-0044	13-Apr-12	Purchase of certified logs, processing and sale of MTCS-certified sawn timber and sawmill waste
53	Chin Ho Sawmill (M) Sdn. Bhd.	SGS-MTCS/COC-0091	24-Dec-12	Purchase of MTCS-certified logs, sawmilling and sale of MTCS-certified sawn timber
54	Evershine Timber Trading Sdn. Bhd.	SGS-MTCS/COC-0092 [MTCC/31-112] [PEFC/34-31-112]	30-Dec-09	Purchase of PEFC-certified sawn timber, processing and sale of PEFC-certified sawn timber, moulding products, finger-jointed products, laminated products and finger-jointed laminated products
55	Arif Jasa Industries Sdn. Bhd.	SGS-MTCS/COC-0031 [MTCC/31-024] [PEFC/34-31-024]	15-Feb-12	Purchase of MTCS-certified logs, sawmilling and sale of MTCS-certified sawn timber
56	Mediarex Sdn. Bhd.	SGS-MTCS/COC-0094 [MTCC/31-089] [PEFC/34-31-089]	11-Jan-10	Purchase of PEFC-certified logs, sawn timber, sawmilling, manufacture and sale of PEFC-certified sawn timber, solid and finger-jointed laminated timber, S4S and mouldings products
57	Eco Lumber Sdn. Bhd.	SGS-MTCS/COC-0028 [MTCC/31-041] [PEFC/34-31-041]	6-Feb-12	Trading of MTCS-certified sawn timber
58	Timber Traders (Selangor) Sdn. Bhd.	FCOC 033 [MTCC/31-084]	18-Jan-10	Manufacture and sale of sawn timber
59	Sanyan Wood Industries Sdn. Bhd.	FCOC 034 [MTCC/31-090] [PEFC/34-31-090]	18-Jan-10	Manufacture and export of plywood
60	Victory Enterprise Sdn. Bhd.	SGS-MTCS/COC-0029 [MTCC/31-020] [PEFC/34-31-020]	2-Feb-12	Purchase of PEFC-certified sawn timber, manufacturing and sale of PEFC-certified sawn timber, finger jointed laminated core lumber, S4S (solid wood) and moulding products
61	Song Sim Sawmill Sdn. Bhd.	SGS-MTCS/COC-0097 [PEFC/34-31-142]	08-Feb-10	Purchase of PEFC-certified logs, sawmilling and sale of PEFC-certified sawn timber
62	United Trading & Sawmill Sdn. Bhd.	SGS-MTCS/COC-0037 [MTCC/31-047] [PEFC/34-31-047]	9-Mar-12	Purchase of PEFC-certified logs, manufacturing and sale of PEFC-certified dressed timber & mouldings
63	UM Wood Industries Sdn. Bhd.	SGS-MTCS/COC-0099 [MTCC/31-086] [PEFC/34-31-086]	11-Feb-10	Purchase of MTCS-certified logs, sawmilling and sale of MTCS-certified sawn timber
64	Carl Ronnow (M) Sdn. Bhd.	SGS-MTCS/COC-0048 [MTCC/31-042] [PEFC/34-31-042]	27-Apr-12	Purchase and sale of PEFC-certified sawn timber and moulding products
65	PTC Timber Sdn. Bhd.	T910488 [MTCC/31-066] [PEFC/34-31-066]	09-Mar-10	Production of sawn timber
66	SNL Woods Sdn. Bhd.	T933288 [MTCC/31-101] [PEFC/34-31-101]	09-Mar-10	Sawmilling and production of mould products (Laminated Woods)
67	Infinite Point Sdn. Bhd.	SGS-MTCS/COC-0100	09-Mar-10	Purchase of MTCS-certified logs, sawmilling and sale of MTCS-certified sawn timber and moulding products
68	Boon Hock Sawmill Sdn. Bhd.	SGS-MTCS/COC-0101	09-Mar-10	Purchase of MTCS-certified logs, sawmilling and sale of MTCS-certified sawn timber, moulding products, laminated scantling and finger jointed products



## APPENDIX I

No.	Company	Certificate Number [Logo Usage Licence No.]	Date of Issuance of Certificate	Scope of Certification
69	Suria Dayapi Timber Products Sdn. Bhd.	SGS-MTCS/COC-0027 [MTCC/31-017] [PEFC/34-31-017]	6-Feb-12	Trading of MTCS-certified sawn timber
70	Shen Foong Trading Sdn. Bhd.	SGS-MTCS/COC-0038 [MTCC/31-061]	10-Apr-12	Purchase of MTCS-certified logs, sawmilling and sale of MTCS-certified sawn timber
71	Evergreen Industries Products Sdn. Bhd.	SGS-MTCS/COC-0033 [MTCC/31-043]	28-Feb-12	Purchase of MTCS-certified logs, sawmilling and sale of MTCS-certified sawn timber
72	Permata Upaya Sdn. Bhd.	SGS-MTCS/COC-0047	13-Apr-12	Purchase of MTCS-certified logs and sawn timber, manufacture and sale of sawn timber, moulding, finger jointed and laminated board
73	Pio Hardwood (M) Sdn. Bhd.	SGS-MTCS/COC-0032 [MTCC/31-030] [PEFC/34-31-030]	21-Feb-12	Purchase of PEFC-certified logs and sawn timber, sawmilling, processing and sale of PEFC-certified sawn timber and moulding products
74	GL Wan Enterprise Sdn. Bhd.	T833888	01-Apr-10	Production of sawn timber
75	Legend Wood Sdn. Bhd.	SGS-MTCS/COC-0045 [MTCC/31-092] [PEFC/34-31-092]	15-Apr-12	Purchase of MTCS-certified logs, sawmilling and sale of MTCS-certified sawn timber
76	GMI Enterprise Sdn. Bhd.	SGS-MTCS/COC-0046	13-Apr-12	Purchase of MTCS-certified logs, manufacture and sale of MTCS-certified sawn timber
77	MIECO Manufacturing Sdn. Bhd.	SGS-MTCS/COC-0042 [MTCC/32-001] [PEFC/34-32-001]	6-Apr-12	Purchase of MTCS-certified logs, slabs, off cuts, woodchips, shave and sawdust, manufacture lamination, sale of MTCS-certified particle board, laminated board & furniture parts
78	Mahakota Sdn. Bhd.	SIRIM-COC 0035 [MTCC/31-100] [PEFC/34-31-100]	26-Apr-10	Manufacture and export of solid wooden doors and components and solid wooden furniture
79	Kilang Papan Seong Eng Sdn. Bhd.	SGS-MTCS/COC-0049 [MTCC/31-035] [PEFC/34-31-035]	4-May-12	Purchase of MTCS-certified logs, process and sale of MTCS-certified sawn timber
80	Leong Seng Sawmill Sdn. Bhd.	SGS-MTCS/COC-0050	21-May-12	Purchase of MTCS-certified logs, sawmilling and sale of MTCS-certified sawn timber
81	Mentakab Veneer & Plywood Sdn. Bhd.	SGS-MTCS/COC-0058 [MTCC/31-051] [PEFC/34-31-051]	20-July-12	Purchase of MTCS-certified logs, manufacture and sale of MTCS-certified plywood
82	Stanwoods Corporation Sdn. Bhd.	SGS-MTCS/COC-0106 [PEFC/34-31-096]	06-May-10	Purchase of MTCS-certified logs, sawmilling and sale of MTCS-certified sawn timber
83	Kilang Papan Teoh Chong Seng Sdn. Bhd.	FCOC 037	24-May-10	Manufacture and sale of sawn timber
84	TSL Timber Sdn. Bhd.	SGS-MTCS/COC-0062 [MTCC/31-054] [PEFC/34-31-054]	21-July-12	Purchase of MTCS-certified logs, sawmilling and sale of MTCS-certified sawn timber
85	Daiken Sarawak Sdn. Bhd.	SIRIM-COC 0038 [MTCC/31-093] [PEFC/34-31-093]	31-May-10	Manufacture and export of medium density fibreboard (MDF)
86	Salak Soon Lee Sawmill Sdn. Bhd.	SGS-MTCS/COC-0072	7-Aug-12	Purchase of MTCS-certified logs, manufacture and sale of MTCS-certified sawn timber

## APPENDIX I

No.	Company	Certificate Number [Logo Usage Licence No.]	Date of Issuance of Certificate	Scope of Certification
87	Papanjaya Sdn. Bhd.	SGS-MTCS/COC-0067 [MTCC/31-062] [PEFC/34-31-062]	27-July-12	Purchase of MTCS-certified logs, sawmilling and sale of MTCS-certified sawn timber
88	Supreme Fame Sdn. Bhd.	SGS-MTCS/COC-0053 [MTCC/31-040] [PEFC/34-31-040]	8-June-12	Trading of MTCS-certified sawn timber
89	E.P.W. Sdn. Bhd.	SGS-MTCS/COC-0064 [MTCC/31-070] [PEFC/34-31-070]	24-July-12	Trading of MTCS-certified sawn timber
90	Winfast Industrial Holdings Sdn. Bhd.	SGS-MTCS/COC-0107 [MTCC/31-095]	10-Jun-10	Purchase of MTCS-certified logs, sawmilling and sale of MTCS-certified sawn timber
91	True Acclaim Sdn. Bhd.	SGS-MTCS/COC-0065 [MTCC/31-056] [PEFC/34-31-056]	29-July-12	Trading of MTCS-certified sawn timber
92	Indah Wood Products Sdn. Bhd.	SGS-MTCS/COC-0071 [MTCC/31-060] [PEFC/34-31-060]	6-Aug-12	Purchase and sale of MTCS-certified sawn timber and moulding products
93	Hills Wood Processing Plants Sdn. Bhd.	SGS-MTCS/COC-0055 [MTCC/31-058] [PEFC/34-31-058]	28-May-12	Purchase of MTCS-certified sawn timber, manufacture and sale of MTCS-certified sawn timber and moulding products
94	P.I.F. Sdn. Bhd.	SGS-MTCS/COC-0056 [MTCC/31-049] [PEFC/34-31-049]	22-June-12	Trading of MTCS-certified sawn timber and moulding products
95	Asrama Raya Sdn. Bhd.	SGS-MTCS/COC-0035 [MTCC/31-036] [PEFC/34-31-036]	20-Feb-12	Purchase of certified logs, process and sale of MTCS-certified sawn timber and sawmill waste
96	Sen Hai Timber Sdn. Bhd.	SGS-MTCS/COC-0109	25-Jun-10	Purchase of PEFC-certified logs, sawmilling and sale of PEFC-certified sawn timber
97	Jejaka Timber Industries Sdn. Bhd.	SGS-MTCS/COC-0070 [MTCC/31-067] [PEFC/34-31-067]	6-Aug-12	Purchase of MTCS-certified logs, sawmilling and sale of MTCS-certified sawn timber
98	Hang Tuah Furniture Sdn. Bhd.	SGS-MTCS/COC-0063 [MTCC/31-098] [PEFC/34-31-098]	21-July-12	Purchase of MTCS-certified sawn timber, manufacture and sale of MTCS-certified garden furniture and moulding products
99	Shua Lym Woodworks Sdn. Bhd.	SGS-MTCS/COC-0077 [MTCC/31-064]	19-Aug-12	Purchase of PEFC-certified logs, sawmilling and sale of PEFC-certified sawn timber
100	Hok Lai Timber (M) Sdn. Bhd.	SGS-MTCS/COC-0068 [MTCC/31-055] [PEFC/34-31-055]	28-July-12	Purchase of MTCS-certified logs, sawmilling and sale of MTCS-certified sawn timber
101	Strategi Mutiara Manufacturing Berhad	SGS-MTCS/COC-0074 [MTCC/31-099] [PEFC/34-31-099]	7-Aug-12	Purchase of PEFC-certified logs and sawn timber, sawmilling, production and sale of PEFC-certified sawn timber, moulding products, finger-jointed products, garden furniture and furniture components
102	Rosewood Corporation Sdn. Bhd.	SGS-MTCS/COC-0089 [MTCC/31-113] [PEFC/34-31-113]	13-Nov-12	Purchase of PEFC-certified sawn timber, outsourced kiln drying and sale of PEFC-certified sawn timber
103	MSK Timber Sdn. Bhd.	SGS-MTCS/COC-0073	7-Aug-12	Purchase of MTCS-certified logs, manufacture and sale of MTCS-certified sawn timber

## APPENDIX I

No.	Company	Certificate Number [Logo Usage Licence No.]	Date of Issuance of Certificate	Scope of Certification
104	Seng Peng Sawmills Sdn. Bhd.	SGS-MTCS/COC-0059	20-July-12	Purchase of MTCS-certified logs, sawmilling and sale of MTCS-certified sawn timber
105	Pesaka Terengganu Berhad	SGS-MTCS/COC-0090	27-Jul-10	Purchase of MTCS-certified logs, sawmilling and sale of MTCS-certified sawn timber and sawmill waste
106	Kilang Papan Bukit Emas Sdn. Bhd.	SGS-MTCS/COC-0080 [PEFC/34-31-133]	8-Sept-12	Purchase of MTCS-certified logs, sawmilling and sale of MTCS-certified sawn timber
107	Perkayuan Fong Shum Sdn. Bhd.	SGS-MTCS/COC-0086	20-Oct-12	Purchase of MTCS-certified logs, sawmilling and sale of MTCS-certified sawn timber
108	Kilang Papan Matang Makmur Sdn. Bhd.	SGS-MTCS/COC-0084	13-Oct-12	Purchase of MTCS-certified logs, sawmilling and sale of MTCS-certified sawn timber using physical separation method
109	Welley Timber Industries Sdn. Bhd.	SGS-MTCS/COC-0110 [PEFC/34-31-111]	17-Aug-10	Purchase of MTCS-certified logs, manufacture and sale of MTCS-certified plywood
110	Lee Wah Sawmill Sdn. Bhd.	SGS-MTCS/COC-0088	13-Nov-12	Purchase of MTCS-certified logs, sawn timber, sawmilling and manufacture and sale of MTCS-certified sawn timber and moulding products
111	Solid Lumber Sdn. Bhd.	SGS-MTCS/COC-0079 [MTCC/31-076] [PEFC/34-31-076]	28-Aug-12	Purchase of PEFC-certified sawn timber , outsourced kiln drying and sale of PEFC-certified sawn timber
112	Kelang Papan Eng Hong Guan Sdn. Bhd.	SGS-MTCS/COC-0082	5-Oct-12	Purchase of PEFC-certified logs, sawmilling and sale of PEFC-certified sawn timber
113	Futurewood Products Sdn. Bhd.	SGS-MTCS/COC-0111 [PEFC/34-31-115]	24-Sep-10	Purchase of MTCS-certified logs and sawn timber, outsourced sawmilling and processing and sale of MTCS-certified moulding products
114	ME Industries Sdn. Bhd.	SIRIM-COC 0044 [MTCC/31-102] [PEFC/34-31-102]	24-Sep-10	Purchase and sale of PEFC-certified solid wood flooring, engineered flooring, decking, plywood, staircase board, mouldings, blockboard and particleboard, sawn timber and medium density fibreboard (MDF)
115	Taichen Enterprise Sdn. Bhd.	SGS-MTCS/COC-0081 [MTCC/31-071]	5-Oct-12	Purchase and sale of PEFC-certified sawn timber
116	Kilang Papan Salamah Sdn. Bhd.	SGS-MTCS/COC-0112 [MTCC/31-108] [PEFC/34-31-108]	2-Oct-10	Purchase of MTCS-certified logs, sawmilling and sale of MTCS-certified sawn timber and moulding products
117	Supreme Tropical Furniture Sdn. Bhd.	SGS-MTCS/COC-0113 [PEFC/34-31-103]	2-Oct-10	Purchase of certified sawn timber and moulding, manufacture and sale of garden furniture, doors and garden gates
118	Beyond Powers Sdn. Bhd.	SGS-MTCS/COC-0114	2-Oct-10	Purchase of MTCS-certified logs, sawmilling and sale of MTCS-certified sawn timber, moulding and finger jointed products
119	Gilbert Hardwood Industries (M) Sdn. Bhd.	SGS-MTCS/COC-0115	2-Oct-10	Purchase of MTCS-certified sawn timber and S4S, manufacture and sale of MTCS-certified flooring and moulding products
120	Perkayuan C. H. Sdn. Bhd.	SIRIM-COC 0045 [MTCC/31-104] [PEFC/34-31-104]	08-Oct-10	Purchase and sale of PEFC-certified sawn timber and solid wood mouldings
121	Roundtree Timber Sdn. Bhd.	FCOC 046 [MTCC/32-002] [PEFC/34-32-002]	15-Oct-10	Manufacture, sale and export of sawn timber, garden stakes, decking, finger-jointed timber, laminated beams, lattice products and plywood
122	K.T.S. Sdn. Bhd.	SGS-MTCS/COC-0116	18-Oct-10	Purchase of MTCS-certified sawn timber, processing and sale of MTCS-certified sawn timber and moulding product



## APPENDIX I

No.	Company	Certificate Number [Logo Usage Licence No.]	Date of Issuance of Certificate	Scope of Certification
123	Leung Huat Timber Industries (M) Sdn. Bhd.	T868288	23-Oct-10	Production of sawn timber and moulding processes
124	Trentim Wood Sdn. Bhd.	T846488	23-Oct-10	Production and trading of sawn timber and mouldings
125	D & R Lumber Sdn. Bhd.	SGS-MTCS/COC-0117 [MTCC/31-107] [PEFC/34-31-107]	28-Dec-10	Purchase of PEFC-certified sawn timber, outsourced kiln drying and manufacture and sale of PEFC sawn timber and moulding products
126	Ho Printing (Malaysia) Sdn. Bhd.	SGS-PEFC/COC-1242	6-Jan-11	Purchase of PEFC-certified materials, conversions, printing, out sources post press processes and sale of PEFC-certified printed products (Books and other printed products)
127	SCK Wooden Industries Sdn. Bhd.	FCOC 048	7-Jan-11	Manufacture and export of solid wood flooring and engineered flooring
128	Yanox Malaysia Sdn. Bhd.	SGS-MTCS/COC-0118 [PEFC/34-31-109]	10-Jan-11	Purchase of MTCS-certified logs, sawmill waste, wood chip and sale of MTCS-certified wood chip
129	Kalabakan Plywood Sdn. Bhd.	SCS-PEFC/COC-003616 [PEFC/34-31-110]	24-Jan-11	Production of plywood
130	Ekowood International Berhad	SGS-MTCS/COC-0120 [PEFC/34-31-125]	29-Jan-11	Purchase of MTCS-certified sawn timber, veneer, manufacture and sale of MTCS-certified engineered hardwood flooring/three ply parquet
131	Shinagawa Sdn. Bhd.	SGS-MTCS/COC-0121	11-Apr-11	Purchase of MTCS-certified logs, sawn timber and sawmill waste. Outsourcing for sawmilling and biomass pellet production, sale of MTCS-certified sawn timber, chip wood and biomass pellet
132	Tan Chee Seng Sawmill Sdn. Bhd.	FCOC 049	29-Apr-11	Manufacture and sale of certified sawn timber
133	Ribuan Ceria Sdn. Bhd.	SIRIM-COC 0050	3-June-11	Purchase and sale of PEFC-certified sawn timber, solid wood and finger jointed mouldings, lamination scantling, veneer and plywood
134	Uptown Power Sdn. Bhd.	FCOC 051	10-June-11	Trading of sawn timber and solid wood mouldings
135	Behn Mayer International Trading Sdn. Bhd.	SGS-MTCS/COC-0122	22-June-11	Trading of PEFC-certified and PEFC recycled paper and board
136	Bestwin Resources Sdn. Bhd.	FCOC 052	21-July-12	Manufacture of certified sawn timber
137	Spicers Paper (Malaysia) Sdn. Bhd.	SIRIM-COC 0053	19-Aug-12	Purchase and sale of PEFC-certified paper, paper board and printing material
138	Major Overseas Trading Timber Sdn. Bhd.	SIRIM-COC 0054	28-July-12	Purchasing of PEFC-certified log, manufacture and sale of PEFC-certified sawn timber, timber slab, saw dust and off-cut timber
139	Anson Timber Products Sdn. Bhd.	SGS-MTCS/COC-0123	7-Aug-12	Purchase and sale of PEFC-certified sawn timber
140	Hexa Viana Sdn. Bhd.	FCOC 055 [MTCC/31-116] [PEFC/34-31-116]	16-Jul-10	Trading of sawn timber, solid wood mouldings, finger-jointed and laminated wood
141	Sri Ledang Sdn. Bhd.	SGS-MTCS/COC-0125 [PEFC/34-31-118]	19-Jul-10	Purchase of PEFC-certified sawn timber, manufacture and sale of PEFC-certified mouldings and finger-jointed products

## APPENDIX I

No.	Company	Certificate Number [Logo Usage Licence No.]	Date of Issuance of Certificate	Scope of Certification
142	Directive Timber Sdn. Bhd.	SGS-MTCS/COC-0124	13-Nov-12	Purchase and sale of PEFC-certified plywood, peeled veneer and medium density fibreboard (MDF)
143	International Paper (Malaysia) Sdn. Bhd.	SGS-PEFC/COC-1388	7-Aug-12	Purchase and sale of PEFC-certified papers and pulps
144	Alam Tropik Sdn. Bhd.	SGS-MTCS/COC-0126	6-Oct-11	Purchase of PEFC-certified logs, sawmilling and sale of PEFC-certified sawn timber
145	Tien Wah Press (M) Sdn. Bhd.	SGS-PEFC/COC-1404 [PEFC/34-31-119]	31-Oct-11	Purchase of PEFC-certified paper rolls processing, outsourcing and producing of PEFC-certified cigarette boxes and general packaging materials
146	Wistra Kayuan Sdn. Bhd.	T925788 [PEFC/34-31-128]	24-Nov-11	Production of sawn timber
147	Uni Lumber Sdn. Bhd.	SGS-MTCS/COC-0127 [PEFC/34-31-121]	7-Dec-11	Purchase of PEFC-certified logs, process, outsource kiln drying and sale of PEFC-certified sawn timber
148	Hoffset Printing Sdn. Bhd.	SGS-PEFC/COC-1422	9-Dec-11	Purchase of PEFC-certified paper sheets, printing, outsource binding and sale of PEFC-certified books, magazines, brochure and other printed matter
149	Bortim Export Sdn. Bhd.	SGS-MTCS/COC-0128 [PEFC/34-31-120]	2-Feb-12	Purchase and sale of PEFC-certified sawn timber
150	Sinora Sdn. Bhd.	SGS-MTCS/COC-0129	16-Feb-11	Purchase of PEFC-certified logs, manufacture and sale of PEFC-certified plywood, veneer and blockboard
151	Ivory Pearl Sdn. Bhd.	SIRIM-COC 0056	4-May-12	Manufacture and export of timber door, door frames and builder joinery
152	Muda Paper Converting Sdn. Bhd.	BMT-PEFC-1160 [PEFC/34-31-124]	15-May-12	Manufacture of paper stationery products, made from PEFC material paper, card and board
153	Sanrix Paper Sdn. Bhd.	SIRIM-COC 0057 [PEFC/34-31-129]	25-May-12	Purchase and sale of PEFC-certified jumbo roll paper and manufacture and sale of PEFC-certified household and sanitary paper
154	Wang Ley Seng Timber Sdn. Bhd.	FCOC 058	20-July-12	Manufacture and sale of PEFC-certified sawn timber
155	L.P. Pacifics Films Sdn. Bhd.	FCOC 059	27-July-12	Manufacture of resin impregnated paper
156	Teoh Chong Sey Sawmill Sdn. Bhd.	SGS-MTCS/COC-0076 [MTCC/31-068]	19-Aug-12	Purchase of PEFC-certified logs, sawmilling and sale of PEFC-certified sawn timber
157	Chiat Hin Envelope Manufacturer Sdn. Bhd.	BMT-PEFC-1186 [PEFC/34-31-146]	28-Aug-12	Design and manufacture of envelopes
158	V Text Wood Sdn. Bhd.	FCOC 060 [PEFC/34-31-127]	28-Sept-12	Trading of sawn timber and manufacture and export of laminated scantling, solid wood moulding and finger-jointed moulding
159	Max Way Enterprise Sdn. Bhd.	SGS-MTCS/COC-0130	5-Oct-12	Purchase of PEFC-certified sawn timber and moulding products, outsource kiln drying of sawn timber and sale of PEFC-certified sawn timber and moulding products
160	Seng Chap Wah Timber Merchant Sdn. Bhd.	SGS-MTCS/COC-0131	5-Oct-12	Purchase of PEFC-certified logs, sawmilling and sale of PEFC-certified sawn timber
161	Tan Chin Huat & Brothers Sdn. Bhd.	SGS-MTCS/COC-0132	2-Nov-12	Purchase of PEFC-certified logs, sawmilling and sale of PEFC-certified sawn timber

## APPENDIX I

No.	Company	Certificate Number [Logo Usage Licence No.]	Date of Issuance of Certificate	Scope of Certification
162	Kian Seng Timber Sdn. Bhd	SGS-PEFC/COC-1568	5-Nov-12	Purchase of PEFC logs, sawmilling and sale of PEFC-certified sawn timber
163	Jianli Timber Sdn. Bhd.	SGS-PEFC/COC-1569	13-Nov-12	Purchase of PEFC-certified logs , sawmilling and sale of PEFC-certified sawn timber
164	Ace Multi-Trade (M) Sdn. Bhd.	SGS-MTCS/COC-0133 [PEFC/34-31-130]	18-Nov-12	Purchase of PEFC-certified logs and PEFC-certified sawn timber, production and sale of PEFC-certified sawn timber, moulding, finger-jointed timber and laminated scantling (solid and finger-jointed) products including sawmill waste (sawdust, wood chip & bark) and off-cuts
165	Maicador Sdn. Bhd.	BMT-COC-1202 [PEFC/34-31-135]	19-Nov-12	Manufacture of wood based engineered doors
166	Jupiter Timber Trading Sdn. Bhd.	SGS-PEFC/COC-1571	22-Nov-12	Purchase of PEFC-certified logs, sawmilling and sale of PEFC-certified sawn timber
167	Ah Hai Industries Sdn. Bhd.	T836588 [MTCC/31-063]	1-Aug-12	Manufacture of sliced veneer, solid wood mouldings; manufacture of finger-jointed and laminated timber products, solid wooden door and door frames, interior wood profiles and solid wood furniture (percentage based, 70% min)
168	Yong Sern Timber Trading Sdn. Bhd.	SGS-PEFC/COC-1576	3-Dec-12	Purchase of PEFC-certified logs, sawmilling and sale of PEFC-certified sawn timber
169	GNS Timber Sdn. Bhd.	SGS-PEFC/COC-1583	14-Dec-12	Purchase of PEFC-certified logs, sawmilling and sale of PEFC-certified sawn timber
170	Muda Cekap Timber Sdn. Bhd.	SGS-PEFC/COC-1584	14-Dec-12	Purchase of PEFC-certified logs, sawmilling and sale of PEFC-certified sawn timber
171	Kilang Papan Galas Setia (M) Sdn. Bhd.	SGS-MTCS/COC-0136	21-Dec-12	Purchase of PEFC-certified logs, sawmilling and sale of PEFC-certified sawn timber
172	GQ Lumber Sdn. Bhd.	SGS-MTCS/COC-0137	21-Dec-12	Purchase of PEFC-certified logs, sawmilling and sale of PEFC-certified sawn timber
173	Bukit Senorang Lumber Industries Sdn. Bhd.	SGS-MTCS/COC-0135 [PEFC/34-31-144]	31-Dec-12	Purchase of PEFC-certified log, manufacture and sale of PEFC-certified plywood
174	Pan Euro Products Sdn. Bhd.	SGS-MTCS/COC-0134 [PEFC/34-31-132]	31-Dec-12	Purchase of PEFC-certified sawn timber, manufacture and sale of PEFC-certified moulding, flooring, solid and laminated finger jointed products
175	Newmarket Fibre Supply Ltd.	SE002511-1	14-Dec-11	Trading in woodchips and other wood products
176	Ascend International Ltd.	SE002514-1	14-Dec-11	Trading in pulp products
177	Macro Aim Sdn. Bhd.	FCOC 061 [PEFC/34-31-131]	3-Jan-13	Trading of sawn timber and manufacture and sale of solid wood moulding and finger-jointed moulding
178	Jarrah Timber Industry Sdn. Bhd.	SGS-MTCS/COC-0139 [PEFC/34-31-134]	11-Jan-13	Purchase of PEFC-certified logs, sawmilling and sale of PEFC-certified sawn timber
179	Musim Istimewa Sdn. Bhd.	SGS-PEFC/COC-1589	14-Jan-13	Purchase of PEFC-certified logs, sawmilling and sale of PEFC-certified sawn timber
180	Soon Heng Timber Industries Sdn. Bhd.	SGS-PEFC/COC-1590	14-Jan-13	Purchase of PEFC-certified logs, sawmilling and sale of PEFC-certified sawn timber
181	Vitalwood Sdn. Bhd.	SGS-PEFC/COC-1591	14-Jan-13	Purchase of PEFC-certified logs, sawmilling and sale of PEFC-certified sawn timber



## APPENDIX I

No.	Company	Certificate Number [Logo Usage Licence No.]	Date of Issuance of Certificate	Scope of Certification
182	Perkayuan Gagasan Padu Sdn. Bhd.	SGS-PEFC/COC-1592	14-Jan-13	Purchase of PEFC-certified logs, sawmilling and sale of PEFC-certified sawn timber
183	Rimba Jaya Timber Sdn. Bhd.	SGS-PEFC/COC-1594	14-Jan-13	Purchase of PEFC-certified sawn timber and sale of PEFC-certified sawn timber, mouldings
184	Industri Perkayuan Peserai (M) Sdn. Bhd.	SGS-MTCS/COC-0140	21-Jan-13	Purchase of PEFC-certified logs and sawn timber, processing and sale of PEFC-certified sawn timber, moulding, S4S, finger-jointed and laminated products
185	Visawood Sdn. Bhd.	SGS-MTCS/COC-0141	21-Jan-13	Purchase of PEFC-certified sawn timber, processing and sale of PEFC-certified moulding, laminated-scantling, finger-jointed and customized timber profiles products
186	Golden Success Timber Sdn. Bhd.	FCOC 0063	1-Feb-13	Trading of sawn timber and manufacture and export of laminated scantling, solid wood moulding and finger-jointed moulding
187	Perfect Confidence Enterprise Sdn. Bhd.	FCOC 0062	1-Feb-13	Trading of sawn timber and manufacture and export of laminated scantling, solid wood moulding and finger-jointed moulding
188	Syarikat Perusahaan Sinar Kelantan Sdn. Bhd.	SGS-MTCS/COC-0142	14-Feb-13	Purchase of PEFC-certified logs, sawmilling and sale of PEFC-certified sawn timber
189	Perusahaan Kayu Kayan Sri Trengganu Sdn. Bhd.	SGS-MTCS/COC-0143	14-Feb-13	Purchase of PEFC-certified logs, sawmilling and sale of PEFC-certified sawn timber
190	Yeoh Sooi Bee Sdn. Bhd.	SGS-MTCS/COC-0145 [PEFC/34-31-138]	14-Feb-13	Purchase of PEFC-certified logs, sawmilling and sale of PEFC-certified sawn timber
191	Blue Roots Sdn. Bhd.	SGS-MTCS/COC-0144 [PEFC/34-31-136]	26-Feb-13	Purchase of PEFC-certified sawn timber and moulding products, outsourced kiln drying and sale of PEFC-certified sawn timber and moulding products
192	Furniland Timber Industries Sdn. Bhd.	T970388 [PEFC/34-31-137]	29-Jan-13	Manufacturing of timber moulding, door, door frame, window and window frame
193	Enhor Industries Sdn. Bhd.	FCOC 0064	22-Feb-13	Trading of sawn timber, manufacture and export solid wood moulding
194	KM Merchant Sdn. Bhd.	SGS-MTCS/COC-0146	26-Feb-13	Purchase of PEFC-certified logs, sawmilling and sale of PEFC-certified sawn timber
195	Kilang Papan Sim Lean Huat Sdn. Bhd.	SGS-MTCS/COC-0147	26-Feb-13	Purchase of PEFC-certified logs, sawmilling and sale of PEFC-certified sawn timber
196	Primado Corporation Sdn. Bhd.	SGS-MTCS/COC-0149	26-Feb-13	Purchase of PEFC-certified logs, sawmilling and sale of PEFC-certified sawn timber
197	H.Y Timber Trading	SGS-PEFC/COC-1605	5-Mar-13	Purchase of PEFC-certified logs, sawmilling and sale of PEFC-certified sawn timber
198	Tapai Wood Enterprise	SGS-PEFC/COC-1606	5-Mar-13	Purchase of PEFC-certified logs, sawmilling and sale of PEFC-certified sawn timber
199	Perkayuan Aktifwood	SGS-PEFC/COC-1607	5-Mar-13	Purchase of PEFC-certified logs, sawmilling and sale of PEFC-certified sawn timber
200	Imbang Tropikal Sdn. Bhd.	SGS-PEFC/COC-1610	6-Mar-13	Purchase of PEFC-certified logs, sawmilling and sale of PEFC-certified sawn timber
201	Heritage Resources Sdn. Bhd.	SGS-PEFC/COC-1609	6-Mar-13	Purchase of PEFC-certified logs, sawmilling and sale of PEFC-certified sawn timber

## APPENDIX I

No.	Company	Certificate Number [Logo Usage Licence No.]	Date of Issuance of Certificate	Scope of Certification
202	Supreme Lumber Sdn. Bhd.	SGS-MTCS/COC-0150	6-Mar-13	Purchase of PEFC-certified logs and sawn timber, sawmilling and sale of PEFC-certified sawn timber
203	Jayamas Timber Trading	SGS-MTCS/COC-0151	7-Mar-13	Purchase of PEFC-certified logs , sawmilling and sale of PEFC-certified sawn timber
204	Kion Seng Timber Products Sdn. Bhd.	SGS-MTCS/COC-0152 [PEFC/34-31-140]	7-Mar-13	Purchase of PEFC-certified sawn timber, manufacture and sale of PEFC-certified laminated flooring products
205	Kion Kok Industries Sdn. Bhd.	SGS-MTCS/COC-0153 [PEFC/34-31-141]	7-Mar-13	Purchase of PEFC-certified sawn timber, manufacture and sale of PEFC-certified laminated flooring products
206	PS Tebrau Jaya Sdn. Bhd.	SGS-MTCS/COC-0154	7-Mar-13	Purchase of PEFC-certified logs, sawmilling and sale of PEFC-certified sawn timber
207	Heng Lee Timber Trading Sdn. Bhd.	SGS-PEFC/COC-1611	8-Mar-13	Purchase of PEFC-certified logs, sawmilling and sale of PEFC-certified sawn timber
208	Yeong Shen Timber Sdn. Bhd.	SGS-PEFC/COC-1613	8-Mar-13	Purchase of PEFC-certified logs, sawmilling and sale of PEFC-certified sawn timber
209	KC Lai Enterprise	SGS-PEFC/COC-1614	8-Mar-13	Purchase of PEFC-certified logs and sawn timber, manufacture and sale of PEFC-certified sawn timber, mouldings and finger-jointed products
210	SH Success	SGS-MTCS/COC-0148 [PEFC/34-31-139]	11-Mar-13	Purchase of PEFC-certified logs, sawmilling and sale of PEFC-certified sawn timber
211	Chen San Trading Sdn. Bhd.	SGS-PEFC/COC-1616	13-Mar-13	Purchase of PEFC-certified logs, sawmilling and sale of PEFC-certified sawn timber
212	Thong Tat Timber Trading	SGS-PEFC/COC-1617	13-Mar-13	Purchase of PEFC-certified logs, sawmilling and sale of PEFC-certified sawn timber
213	Perkayuan Sim Hup Sdn. Bhd.	SGS-PEFC/COC-1618	13-Mar-13	Purchase of PEFC-certified logs, sawmilling and sale of PEFC-certified sawn timber
214	Yik Foong Tropical Wood Sdn. Bhd.	SGS-PEFC/COC-1620	14-Mar-13	Purchase of PEFC-certified logs, sawmilling and sale of PEFC-certified sawn timber
215	Leong Kwong Sdn. Bhd.	SGS-PEFC/COC-1621	14-Mar-13	Purchase of PEFC-certified logs and sawn timber, processing and sale PEFC-certified sawn timber, moulding, lamination and finger-jointed products
216	Uniland Timber Trading	SGS-PEFC/COC-1619	14-Mar-13	Purchase and sale of PEFC-certified sawn timber
217	Global Timbermart Dot Com Sdn. Bhd.	FCOC 0065	15-Mar-13	Trading of sawn timber and timber products
218	Danwin Marketing (M) Sdn. Bhd.	SGS-PEFC/COC-1623	15-Mar-13	Purchase and sale of PEFC-certified sawn timber, sawmill waste including wood chips, off-cut and sawdust and moulding products
219	Dmas Juta Enterprise	SGS-PEFC/COC-1629	26-Mar-13	Purchase and sale of PEFC-certified kiln-dried sawn timber
220	Quantiwood Sdn. Bhd.	SGS-PEFC/COC-1628	26-Mar-13	Purchase and sale of PEFC-certified kiln-dried sawn timber and moulding products
221	DJ Timber Trading	SGS-PEFC/COC-1630	26-Mar-13	Purchase of PEFC-certified logs, sawmilling and sale of PEFC-certified sawn timber
222	Easthome Capital Sdn. Bhd.	SGS-PEFC/COC-1632	28-Mar-13	Purchase of PEFC-certified logs, sawmilling and sale of PEFC-certified sawn timber

## APPENDIX I

No.	Company	Certificate Number [Logo Usage Licence No.]	Date of Issuance of Certificate	Scope of Certification
223	Sun Sheng Ni Sdn. Bhd.	SGS-MTCS/COC-0155	2-Apr-13	Purchase of PEFC-certified logs, sawmilling and sale of PEFC-certified sawn timber
224	MDK Asia Sdn. Bhd.	FCOC 0066	12-Apr-13	Trading of sawn timber and timber products
225	Sharikat Kayu Gedong Sendirian Berhad	SGS-MTCS/COC-0156	26-Apr-13	Purchase of PEFC-certified sawn timber, manufacture, processing and sale of PEFC-certified solid and engineered and finger jointed wood, door frame, roof, trusses and moulding product
226	Wing Heap Timber Industry Sdn. Bhd.	SGS-MTCS/COC-0157	26-Apr-13	Purchase of PEFC-certified sawn timber, processing and sale of PEFC-certified kiln-dried sawn timber, moulding products, laminated-scantling, furniture parts, finger-jointed and customized timber profiles
227	Ho Brothers Wood Products Sdn. Bhd.	SGS-PEFC/COC-1637	26-Apr-13	Purchase of PEFC-certified logs, sawmilling, manufacture and sale of PEFC sawn timber, and moulding products
228	Wan Soon Timber Trading	SGS-PEFC/COC-1638	26-Apr-13	Purchase of PEFC-certified logs, sawmilling and sale of PEFC-certified sawn timber
229	Perkayuan Mekar Sdn. Bhd.	SGS-PEFC/COC-1639	26-Apr-13	Purchase of PEFC-certified logs, sawmilling and sale of PEFC-certified sawn timber
230	B.K.B. Hevea Products Sdn. Bhd.	SGS-MTCS/COC-0158	4-May-13	Purchase of PEFC-certified sawn timber, veneer sheets and plywood, manufacture and sale of PEFC-certified three-layered engineered wood parquet
231	Fenglin Timber Lumber Sdn. Bhd.	SIRIM-COC 0067	17-May-13	Manufacture, sale and export of sawn timber
232	Timbertech Wood Industries Sdn. Bhd.	SGS-MTCS/COC-0159 [MTCC/31-069] [PEFC/34-31-069]	20-May-13	Purchase of PEFC-certified sawn timber, manufacture and sale of PEFC-certified sawn timber and moulding products
233	Aikbee Sawmill Sdn. Bhd.	T971988	22-May-13	Sawmilling and exporting sawn timber
234	Nature Green Lumber Trading Sdn. Bhd.	SGS-PEFC/COC-1645	6-June-13	Purchase of PEFC-certified logs, sawmilling and sale of PEFC-certified sawn timber, sawmill wastes (including saw dust and bulk), timber chips/off-cuts
235	HeveaBoard Berhad	SIRIM-COC 0068 [PEFC/34-31-143]	10-Jan-13	Purchase of certified sawmill waste (slabs, off cut, wood chips) and round logs and manufacture. Sale domestic and export of certified plain and laminated particle board
236	Bormill Wood (TRG) Sdn. Bhd.	SGS-MTCS/COC-0160 [PEFC/34-31-126]	12-June-13	Purchase of PEFC-certified sawn timber, outsourced kiln drying, manufacture and sale of PEFC-certified sawn timber and moulding products
237	KH Sawmill Sdn. Bhd.	SIRIM-COC 0069	13-June-13	Purchase logs, manufacture, sale and export of sawn timber
238	Kimanjaya Sdn. Bhd.	SGS-MTCS/COC-0161	9-July-13	Purchase of PEFC-certified logs, sawmilling and sale of PEFC-certified sawn timber
239	Sun Kin Heng Sdn. Bhd.	SGS-MTCS/COC-0162	9-July-13	Purchase of PEFC-certified logs, sawmilling and sale of PEFC-certified sawn timber
240	Golden Hill GM Enterprise	SGS-PEFC/COC-1657	15-July-13	Purchase of PEFC-certified logs, sawmilling and sale of PEFC-certified sawn timber
241	KGR Greenwood (M) Sdn. Bhd.	SIRIM-COC 0070 [PEFC/34-31-152]	15-July-13	Purchase, sale and export of PEFC-certified sawn timber



## APPENDIX I

No.	Company	Certificate Number [Logo Usage Licence No.]	Date of Issuance of Certificate	Scope of Certification
242	W.T.W Plywood & Timber Sdn. Bhd.	SGS-PEFC/COC-1659	16-July-13	Purchase of PEFC-certified sawn timber, plywood, finger-jointed & laminated finger-jointed, manufacture and sale of PEFC-certified sawn timber, moulding product, finger-jointed and laminated finger-jointed, plywood, solid flooring, door frame and decking
243	TKH Industries Sdn. Bhd.	SGS-PEFC/COC-1660	16-July-13	Purchase of PEFC-certified sawn timber, manufacture and sale of PEFC sawn timber, moulding products, finger-jointed and furniture parts
244	Hoya Industries Sdn. Bhd.	SGS-PEFC/COC-1663 [PEFC/34-32-003]	18-July-13	Purchase of PEFC-certified tissue paper in roll, processing and sale of PEFC-certified tissue paper, household and sanitary pulp products
245	Fine Quality Timber Sdn. Bhd.	T973088	18-July-13	Manufacture finger jointing and general mouldings for export market
246	Kim Yeo Timber Trading Sdn. Bhd.	T973788	18-July-13	The provision of sawmilling and moulding, local sale and exporting of sawn timber, moulding and wood chips
247	Besut Tsuda Wood Products Sdn. Bhd.	SIRIM-COC 0071	25-July-13	Purchase of PEFC-certified sawn timber, manufacture and sale of PEFC-certified sawn timber, mouldings, finger-jointed and laminated timber
248	Sundeck Wood Product Sdn. Bhd.	T973888	31-July-13	Manufacture of moulded timber products
249	Ah Phong Kilang Papan	T974388	31-July-13	Production of sawn timber
250	Trentim Wood Industries Sdn. Bhd.	T846488A	31-July-13	Production and trading of sawn timber and mouldings
251	Ng Ah Kek Sawmill Sdn. Bhd.	SIRIM-COC 0072	2-Aug-13	Purchase of PEFC-certified logs, manufacture, sale and export of certified sawn timber
252	Progress Timber Corporation Sdn. Bhd.	SGS-MTCS/COC-0163 [PEFC/34-31-145]	5-Aug-13	Purchase of PEFC-certified sawn timber, outsource kiln-drying and sale of PEFC-certified sawn timber products
253	HLM Wood Products Sdn. Bhd.	SIRIM-COC 0073	23-Aug-13	Purchase, sale (domestic) and export of PEFC-certified sawn timber and timber products (truck flooring, decking and solid wood moulding)
254	See Lee Sawmill Sdn. Bhd.	SGS-PEFC/COC-1667	28-Aug-13	Purchase of PEFC-certified logs, sawmilling and sale of PEFC-certified sawn timber
255	Ganda Bintang Sdn. Bhd.	SGS-PEFC/COC-1668	2-Sept-13	Purchase of PEFC-certified logs, sawmilling and sale of PEFC-certified sawn timber
256	Chin Guan Chan Sdn. Bhd.	SGS-MTCS/COC-0164 [PEFC/34-31-148]	2-Sept-13	Purchase of PEFC-certified logs, sawmilling and sale of PEFC-certified sawn timber
257	Syarikat Kilang Papan Sungai Charu	T974488	4-Sept-13	Production of sawn timber
258	Kim Wood Industries Sdn. Bhd.	T973388 [PEFC/34-31-154]	4-Sept-13	Manufacture of lamscant, solid & finger jointed board, finger jointed strip & panel
259	Synergy House Furniture Sdn. Bhd.	SGS-PEFC/COC-1669	5-Sept-13	Purchase of PEFC-certified sawn timber, plywood, particleboard, medium density board (MDF), indoor furniture, manufacturer, trading and sale of PEFC-certified indoor furniture, furniture parts & components
260	BTM Timber Industries Sdn. Bhd.	SIRIM-COC 0074	9-Sept-13	Purchase of PEFC-certified log, manufacture and sale of PEFC-certified sawn timber, timber slab, saw dust, and off-cut

## APPENDIX I

No.	Company	Certificate Number [Logo Usage Licence No.]	Date of Issuance of Certificate	Scope of Certification
261	MMM Timber Trading	SGS-PEFC/COC-1671	10-Sept-13	Purchase of PEFC-certified logs and sawn timber, sawmilling and sale of PEFC-certified sawn timber
262	Jasa TMD Sdn. Bhd.	SIRIM-COC 0075	13-Sept-13	Purchase, sale and export of PEFC-certified sawn timber and moulded timber products
263	Jemaramas Jaya Sdn. Bhd.	SIRIM-COC 0076 [PEFC/34-31-149]	13-Sept-13	Purchase of PEFC-certified plain and laminated particle board, medium density fibreboard (MDF) and plywood and manufacture of PEFC-certified panels and office system furniture for sale (domestic) and export
264	Modern Timber Products Sdn. Bhd.	SGS-MTCS/COC-0165 [PEFC/34-31-147]	17-Sept-13	Purchase of PEFC-certified sawn timber, manufacture and sale of PEFC-certified sawn timber, moulding, finger jointed and laminated scantling (solid and laminated) products
265	Chaah Sawmill Sdn. Bhd.	SGS-MTCS/COC-0166	14-Sept-13	Purchase of PEFC-certified logs, sawmilling and sale of PEFC-certified sawn timber
266	Bliyo Timber Sdn. Bhd.	SGS-MTCS/COC-0167	20-Sept-13	Purchase of PEFC-certified sawn timber, manufacturing and sale of PEFC-certified sawn timber, moulding products, furniture parts & component, and finger-jointed products
267	Tong Sim Wood Industries Sdn. Bhd.	T973688 [PEFC/34-31-150]	30-Sept-13	Supply of sawn timber, moulded products, wood braces, cross arms and wooden flooring
268	Chee Wah Corporation Berhad	BMT-PEFC-1288 [PEFC/34-31-153]	14-Oct-13	Manufacture of paper based stationery, printed paper products and paper products, includes outsourcing for paper coating, hot stamping and lamination
269	Zedtee Plywood Sdn. Bhd.	SIRIM-COC 0077 [PEFC/34-31-155]	8-Nov-13	Purchase of PEFC-certified logs and manufacture, sale (domestic) and export of PEFC-certified plywood
270	Xprint Sdn. Bhd.	SIRIM-COC 0078 [PEFC/34-31-156]	8-Nov-13	Purchase of PEFC-certified paper and printing and sale of PEFC-certified printed paper
271	Kee Neng Wood Factory	SIRIM-COC 0079	8-Nov-13	Purchase of PEFC-certified sawn timber, manufacture of PEFC-certified solid timber moulding and flooring for sale and printing paper for sale
272	UTS Mouldings Sdn. Bhd.	SGS-MTCS/COC-0168 [PEFC/34-31-151]	14-Nov13	Purchase of PEFC-certified sawn timber, manufacture and sale of PEFC-certified sawn timber, moulding, laminated scantling (solid & finger jointed) products
273	Yik Huat Timber Enterprise Sdn. Bhd.	T977088	14-Nov13	Production of sawn timber
274	Natuna Venture Sdn. Bhd.	BV/CdC/3139547	27-Dec-13	Sawn timber, garden stakes, pegs, decking, lattice and garden edging
275	Zahan Resources Sdn. Bhd.	T977388	31-Dec-13	Supply of laminated scantling, finger jointed stripe and moulded products

Summary: Peninsular Malaysia - 264

Sabah - 3

Sarawak - 8

**Total PEFC Certificate issued - 275**



**MALAYSIAN TIMBER CERTIFICATION COUNCIL**

C-08-05, Block C, Megan Avenue II,  
No. 12, Jalan Yap Kwan Seng,  
50450 Kuala Lumpur, Malaysia.

Tel : 603-2161 2298  
Fax : 603-2161 2293

E-mail : [info@mtcc.com.my](mailto:info@mtcc.com.my)  
Website : [www.mtcc.com.my](http://www.mtcc.com.my)