



[www.mtcc.com.my](http://www.mtcc.com.my)

# ANNUAL REPORT 2010



---

## CONTENTS

---

	Page
VISION AND MISSION	3
CORPORATE PROFILE	3
BOARD OF TRUSTEES	4
ANNUAL GENERAL MEETING	5
ORGANISATION STRUCTURE	6
CHAIRMAN'S STATEMENT	8
REVIEW OF OPERATIONS	10
MTCC'S NEW OFFICE	12
OPERATIONS	13
EXPORT OF MTCS AND PEFC-CERTIFIED TIMBER PRODUCTS	17
CERTIFICATION STANDARDS	21
TRAINING	24
PROMOTION	26
RECOGNITION OF MTCS	33
CERTIFIED FORESTS UNDER VARIOUS CERTIFICATION SCHEMES	35
COOPERATION	36
SIGNIFICANT EVENTS	40
FINANCIAL STATEMENTS	46
APPENDICES	48

## Vision

To be recognised as the leading timber certification organisation for tropical forests

## Mission

To establish and operate a credible and internationally recognised national timber certification scheme towards promoting sustainable forest management in Malaysia

## Corporate Profile

The Malaysian Timber Certification Council (MTCC) is an independent organisation established in October 1998 to develop and operate the voluntary Malaysian Timber Certification Scheme (MTCS). Incorporated under the Companies Act 1965 as a company limited by guarantee, MTCC is governed by a Board of Trustees and started its operation in January 1999.

MTCC's main activities are to:

- Be the national governing body (NGB) which has overall responsibility for the MTCS
- Support the standard-setting process by serving as the secretariat to the appropriate standard setting body in formulating standards related to timber certification and keeping them under review periodically
- Process applications for MTCS notification of Certification Bodies (CBs) operating forest management system and/or chain-of-custody (CoC) certification and issuance of logo usage licenses to Certificate Holders
- Implement a procedure for the investigation and resolution of disputes, complaints and appeals related to its role as the NGB
- Liaise closely with the national accreditation body and other certification organisations in matters related to timber certification
- Coordinate with national, regional and international bodies related to timber certification to facilitate cooperation and mutual recognition arrangements
- Conduct programmes to promote and publicise the MTCS, both locally and internationally



## BOARD OF TRUSTEES

The Board of Trustees, comprising the Chairman and ten other members, is the governing body which decides the overall policy and direction in carrying out MTCC's activities. In addition to the Chairman, the members comprise of two representatives each from academic and research institutions, the timber industry, social and environmental non-governmental organisations (NGOs) and government agencies.

The Board of Trustees in 2010 comprised:

### Chairman

Dato' Dr. Freezailah Che Yeom

### Trustees

• Datin Paduka Nurmala Abd. Rahim	Ministry of Plantation Industries and Commodities
• Zurinah Pawanteh	Ministry of Natural Resources and Environment
• Dato' Dr. Abdul Latif Mohmod	Forest Research Institute Malaysia
• Emeritus Prof. Dato' Dr. Abdul Latiff Mohamad	Universiti Kebangsaan Malaysia
• Tan Chin Tong	Malaysian Nature Society ( <i>up to 2 May 2010</i> )
• Dr. Melvin Gumal	Wildlife Conservation Society Malaysia Program ( <i>w.e.f. 3 May 2010</i> )
• Dr. Henry Chok	Sabah Environmental Protection Association
• Elbson Marajan Pengeran	Sarawak Dayak National Union
• Dr. Banabas Tapin	Kadazandusun Cultural Association
• Low Ching Cheong	Timber Exporters' Association of Malaysia
• Datuk James Hwong	Sabah Timber Industries Association



**Top left to right** : Dato' Dr. Abdul Latif Mohmod, Datin Paduka Nurmala Abd. Rahim, Dato' Dr. Freezailah Che Yeom, Zurinah Pawanteh, Emeritus Prof. Dato' Dr. Abdul Latiff Mohamad

**Bottom left to right** : Dr. Melvin Gumal, Dr. Henry Chok, Dr. Banabas Tapin, Datuk James Hwong, Elbson Marajan, Low Ching Cheong

The Board of Trustees met four times in 2010 as follows:

Forty-Third Meeting – 6 April in Kuala Lumpur

Forty-Fourth Meeting – 8 June in Kuala Lumpur

Forty-Fifth Meeting – 30 September in Kuala Lumpur

Forty-Sixth Meeting – 21 December in Kota Kinabalu



*Forty-Third Meeting*



*Forty-Fourth Meeting*



*Forty-Fifth Meeting*



*Forty-Sixth Meeting*

### Investment Committee

The Investment Committee oversees the overall implementation of MTCC's investment policy, particularly in the management of the Endowment Fund. The Committee is also responsible for the formulation of policies and procedures on matters related to the establishment of the Fund.

The members of the Investment Committee in 2010 were:

Dato' Dr. Freezailah Che Yeom (Chairman)

Datin Paduka Nurmala Abd. Rahim - Ministry of Plantation Industries and Commodities

Mustafar Taib - Ministry of Finance

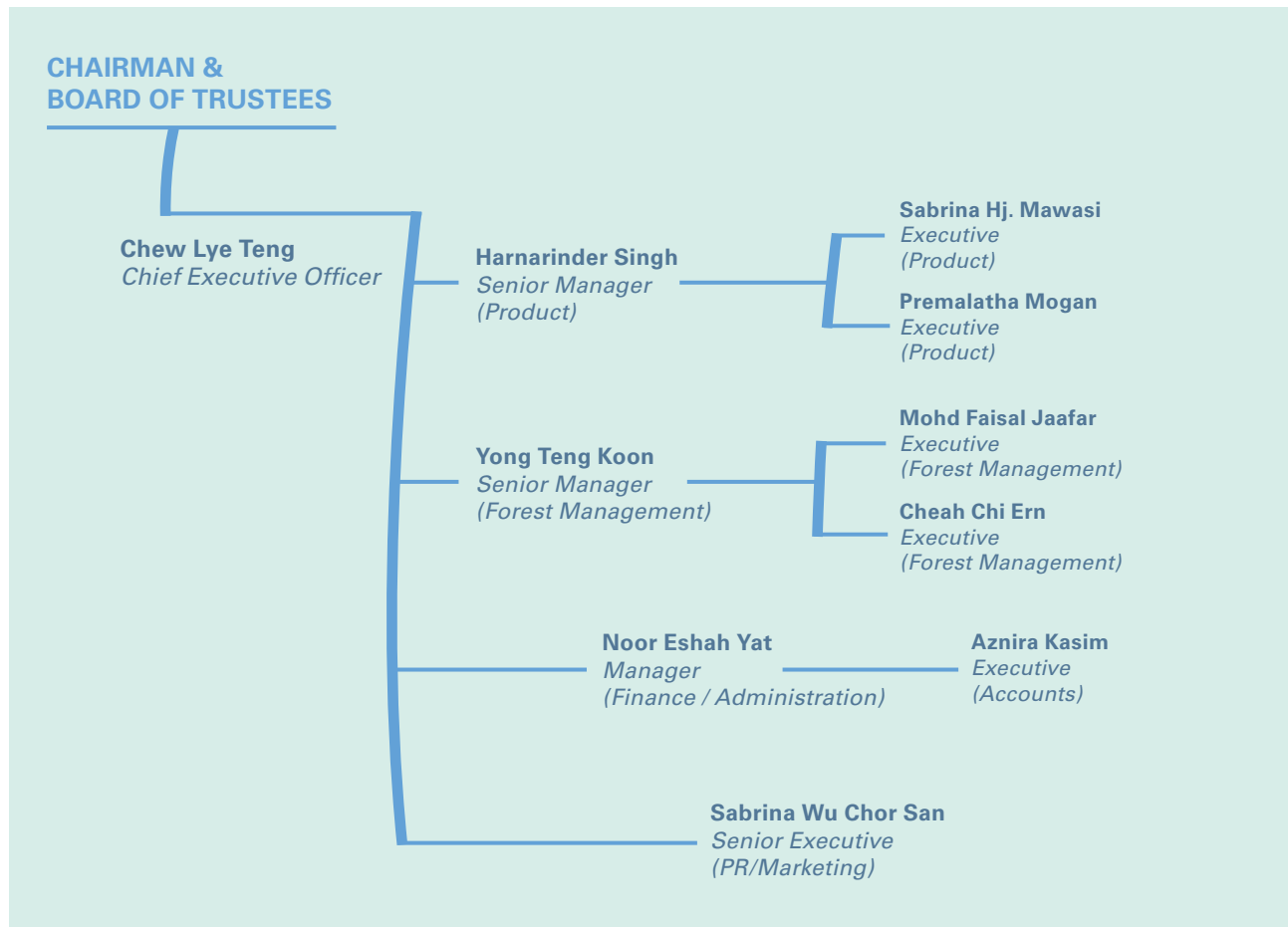
Chew Lye Teng - CEO

## ANNUAL GENERAL MEETING

The Eleventh Annual General Meeting was held on 24 June during which the Audited Accounts for the financial year ended 31 December 2009, Reports of the Trustees and Auditors, and the Annual Report for the year 2009, were tabled and adopted by the Members.



# ORGANISATION STRUCTURE



## Management Team and Supporting Staff



**Sitting left to right** : Sabrina Wu, Yong Teng Koon, Chew Lye Teng, Harnarinder Singh, Noor Eshah Yat, Mohd. Faisal Jaafar

**Standing left to right** : Nur Ashykin Ab. Shukor, Rasyidah Abdul Rahman, Sabrina Hj. Mawasi, Mohamad Fadzli Abd Ghani, Cheah Chi Ern, Norashida Md. Zin, Premalatha Mogan, Aznira Kasim

---

## Notification Committee

The Notification Committee which is responsible for the notification of CBs and the issuance of Logo Usage Licences, met 13 times in 2010 as follows:

Seventeenth Meeting - 21 January	Twenty-Fourth Meeting - 9 August
Eighteenth Meeting - 27 January	Twenty-Fifth Meeting - 20 August
Nineteenth Meeting - 10 March	Twenty-Sixth Meeting - 27 September
Twentieth Meeting - 26 March	Twenty-Seventh Meeting - 7 October
Twenty-First Meeting - 17 May	Twenty-Eighth Meeting - 22 October
Twenty-Second Meeting - 14 June	Twenty-Ninth Meeting - 9 November
Twenty-Third Meeting - 16 July	

The members of the Notification Committee in 2010 were:

Chew Lye Teng (Chairman)  
Harnarinder Singh  
Yong Teng Koon

## In-House Investment Committee

The In-House Investment Committee monitors the implementation of the decisions of the Investment Committee, as well as formulates investment recommendations for the consideration of the Investment Committee.

The members of the In-House Investment Committee in 2010 were:

Chew Lye Teng (Chairman)  
Harnarinder Singh  
Yong Teng Koon  
Noor Eshah Yat (Secretary)

Company Secretary	Company Auditors
Zainal Abidin Pit (MAICSA 7014057) ZAP Management Services Sdn. Bhd. 15B, 2 <sup>nd</sup> Floor, Jalan Tengku Ampuan Zabedah F9/F 40100 Shah Alam, Selangor	Mazars (No. AF: 1954) Wisma Selangor Dredging 7 <sup>th</sup> Floor, South Block, 142-A, Jalan Ampang 50450 Kuala Lumpur

---

## CHAIRMAN'S STATEMENT

---

It is with pleasure that I present MTCC's Annual Report for 2010 as it enters its twelfth year of operational activities. The evolving field of forest certification was busy last year. The year saw many events and initiatives on various aspects of sustainable forest management and certification and how implementation may be improved and made more widespread. Timber legality, which is a strategic milestone on the long and difficult journey to sustainability, and its verification, received much global attention in relation to the US Lacey Act and the EU Forest Law Enforcement, Governance and Trade (FLEGT) Action Plan, in which the Voluntary Partnership Agreement (VPA) is central. It seems that the whole world is brainstorming on how to make progress to assure sustainability and legality of timber. And at times, these debates became quite stormy. Within these global perspectives, the year under review was equally busy on the home front and for MTCC.

After much consideration based on the need to conserve and sustainably manage its Endowment Fund in order to ensure adequate income to finance its operational activities, MTCC decided to purchase its own office premises. To this end, MTCC moved to its own office premises located on the busy Jalan Yap Kwan Seng on 31 May. Though not the most elegant, MTCC's new office, which we proudly own, is ample and functional.

In view of its experience in forest management and chain of custody certification, in which timber legality is a key component, MTCC continued to be actively involved in providing technical support in the on-going EU-Malaysia negotiations to conclude a VPA. An essential element in the VPA is the Timber Legality Assurance Scheme (TLAS) to assure the legality of Malaysia's timber products exported to the EU markets. Substantial progress has been made in the negotiations, but a few outstanding issues remain to be resolved.

Although the Malaysian Timber Certification Scheme (MTCS) has been endorsed by the Programme for the Endorsement of Forest Certification schemes (PEFC) Council and accepted under a number of national public procurement policies, the process of improving the MTCS continues. Indeed, the certification standard used in the MTCS, the *Malaysian Criteria and Indicators for Forest Management Certification [MC&I(2002)]* can be considered as a "living document". I am happy to note that in 2010, the review of the MC&I(2002) made good progress, with the First Draft of the revised standard being subjected to a second public comment period. This was followed with other activities prescribed in the review process during the year, in accordance with international norms and procedures.

In the United Kingdom, the Department for Environment, Food & Rural Affairs (DEFRA) is responsible for the development and implementation of the Government timber procurement policy. To this end, DEFRA has set up the Central Point of Expertise on Timber (CPET) to undertake assessment of certification schemes to determine their compliance with the timber procurement policy. The CPET undertook a review of the two major international schemes, PEFC and FSC, in 2009. The results of the review concluded that both schemes assure sustainability of timber in compliance with the UK Government's timber procurement policy. Since the MTCS has been endorsed by the PEFC Council, I am glad to report that MTCS-certified timber is accepted as being sustainable by the UK Government.

Another European country that undertakes a similar assessment, like the CPET, is The Netherlands through the Timber Procurement Assessment Committee (TPAC). Unlike the CPET, which evaluated the PEFC International with implications on schemes that it has endorsed, the TPAC's approach is somewhat different. The MTCS was evaluated as a scheme on



its own, just like the other PEFC-endorsed schemes. A press release issued by the TPAC on 3 March 2010 concluded that the MTCS complies with the requirements of the Dutch Timber Procurement Criteria. However, in another press release on 22 October 2010, the TPAC reversed its decision. This was due to an objection filed by a Dutch civil society coalition. A final decision has yet to be made by the Dutch Minister of Infrastructure and the Environment in this matter. In the meantime, the issue has been the subject of a discussion in the Dutch Parliament. I must confess that I could never have imagined that the MTCS, which is the result of a decade of hard work and has been widely accepted as well as endorsed by the largest international certification scheme, has to undergo such a lengthy process of evaluation and discussion involving a technical body and the supreme legislative body of a country. Let us hope that the outcome will inspire and contribute to the sustainable management and certification especially of the world's natural tropical forests, which we know, is in a state of crisis.



I cannot end my statement for 2010 without paying tribute to the dedicated members of the small MTCC secretariat led by its Chief Executive Officer, Chew Lye Teng. To the members of the MTCC Board of Trustees and all stakeholders, I wish to thank them for their support and cooperation.

2010 has been a very challenging year for MTCC with much time, energy and resources diverted especially to address the TPAC evaluation of the MTCS. Irrespective of the outcome, MTCC will remain steadfast and pursue its vision and mission with determination. I believe we will be equal to the challenge as we welcome 2011.

A handwritten signature in black ink, appearing to read 'Freezailah'.

**DATO' DR. FREEZAILAH CHE YEOM**

Chairman

22 July 2011

---

## REVIEW OF OPERATIONS

---



The year 2010 saw the MTCS moving into the next phase of its development, following its endorsement by the PEFC Council in 2009. The certified FMUs and timber companies gradually made the transition to become PEFC-certified entities. By 31 December, the number of PEFC CoC certificate holders totalled 160. In the case of the FMUs, eight of the nine certified FMUs made the transition to become PEFC-certified during the year. These eight FMUs accounted for a total area of 4.2 million hectares of natural forest.

As an endorsed PEFC scheme, starting in 2010, MTCC was required to pay an annual development fee to the PEFC Council, based on the number of certificate holders. In order to offset this annual payment, MTCC had to impose a fee for the use of the PEFC Logo on organisations which have signed the PEFC Logo Usage Licence Agreement with MTCC.

With these developments, the first shipment of PEFC-certified sawn timber under the MTCS arrived in Belgium in September. By the end

of 2010, out of the total volume of 72,267 cubic metres of certified timber products exported under the MTCS, 2,510 cubic metres or 3.4% were PEFC-certified. The Netherlands remained as the largest market for timber products certified under the MTCS, accounting for 54.3% of the total exports in 2010. The total cumulative volume of certified timber products exported under the MTCS reached 439,081 cubic metres.

MTCC's efforts to promote the PEFC in the Asia Pacific region was initiated by jointly organising, with PEFC International, the first PEFC Stakeholder Dialogue for the region in Kuala Lumpur in June. The Dialogue received very good response, attracting 112 participants representing not only stakeholder groups within Malaysia but also from a number of the neighbouring countries. The Dialogue was very useful in providing an overview of the development of forest certification in the region, facilitating a good understanding on the PEFC requirements for standard setting, group forest certification and sustainable forest management standards, as well as providing an opportunity to share experiences.

The process to review the *MC&I(2002)* continued to make good progress, with active participation from all stakeholder groups in forwarding comments and proposals during the Second Public Comment and the three regional consultations. In addition, the project to formulate guidelines and procedures for social impact assessment and monitoring of forest management operations was initiated as a further step to facilitate efforts to comply with the *MC&I(2002)*.

With regard to forest plantations, the *Malaysian Criteria and Indicators for Forest Management Certification (Forest Plantations)* [*MC&I(Forest Plantations)*] was submitted for assessment by the PEFC Council for the purpose of inclusion into the endorsed MTCS.

Capacity building continued to be given attention, with three auditor training courses, on both forest management certification and CoC certification, being conducted. In addition, in conjunction with the PEFC Stakeholder Dialogue, a training course on CoC certification was conducted by the PEFC Council for 30 auditors.

The assessment of the MTCS by the TPAC in The Netherlands took a considerable amount of MTCC's time and efforts during the year. It was thus very disappointing that the positive assessment of the MTCS by the TPAC in March was later changed to a negative assessment in October, following objections received. Nevertheless, in December MTCC has filed an appeal against the TPAC decision.

At the regional level, the *Working Group on a Pan ASEAN Timber Certification Initiative* continued to make progress, with the finalisation of the *ASEAN Chain of Custody Guidelines for Legal Timber and Sustainable Timber* as a reference document for the ASEAN Member States in developing their respective national standards for chain of custody.

The year also saw MTCC moving to its own office premises in Megan Avenue II on 31 May. This long awaited move has enabled MTCC to be equipped with better facilities, such as a Board Room to accommodate larger meetings. We have taken this opportunity to feature the use of MTCS-certified timber products, in the form of certified Merbau flooring in the reception area, and certified Kembang Semangkuk solid doors for the Board Room.

Therefore at the end of 2010, the MTCS has started to become an important source of PEFC-certified tropical timber products. Nevertheless, it continues to face difficult challenges, particularly in The Netherlands, the most important market for certified timber products from Malaysia.

The progress made in implementing MTCC's various activities has been achieved through the continued cooperation and support from the forest managers, timber companies, certification bodies, accreditation bodies, forestry and timber-related agencies, and representatives of the environmental, social and economic stakeholder groups in Sabah, Sarawak and Peninsular Malaysia, for which MTCC is most grateful.

I would like to express my gratitude to the Chairman and Board of Trustees, as well as the Members of MTCC, for their continued guidance and support to the MTCC management. To my team - the MTCC managers, executives and supporting staff - a big thank you for the diligence, commitment and good teamwork shown in 2010 in successfully implementing the various activities and programmes.



**CHEW LYE TENG**

Chief Executive Officer

22 July 2011

## MTCC'S NEW OFFICE

In June, MTCC moved to its own office premises. The new office, which has approximately 480 sq. metres floor space, is equipped with better facilities, such as a Board Room that is able to accommodate larger meetings. The office is situated at C-08-05, Block C, Megan Avenue II, No. 12, Jalan Yap Kwan Seng, 50450 Kuala Lumpur.



*Reception area furnished with MTCS-certified merbau flooring*



*Office entrance*



*MTCS-certified Board Room doors made of Kembang Semangkuk timber supplied by GP Doors Sdn. Bhd.*



*The Board Room*



*View from the reception area with the CEO, Chairman and Senior Managers rooms on the left*



*MTCS-certified merbau flooring supplied by Kim Teck Lee Flooring Sdn. Bhd.*



## Forest Management Certification

In 2010, six more Forest Management Units (FMUs), i.e. Johor, Kedah, Pahang, Perak, Selangor and Terengganu FMUs, were assessed and found to fulfil the requirements of the *MC&I(2002)* under the new institutional arrangement, thereby qualifying to be awarded with the accredited *Certificate for Forest Management*, and in the process attaining PEFC-certified status.

All the six certified FMUs, together with the Negeri Sembilan and Segaliud Lokan FMUs which were certified in 2009, were subjected to their first surveillance audits in 2010. Details on the date of issuance of the Certificate, the certification body involved, and the dates of the first surveillance audit for the FMUs mentioned, are as shown in **Table 1**.

**Table 1: Details on Issuance of Certificate and Surveillance Audit**

Name of FMU	Certification Body	Date of Issuance of Certificate	Date of Surveillance Audit 01
Segaliud Lokan	SIRIM QAS International Sdn. Bhd.	3 December 2009	27-30 September
Negeri Sembilan	SIRIM QAS International Sdn. Bhd.	29 December 2009	21-23 July
Johor	SGS (Malaysia) Sdn. Bhd.	1 April 2010	27-30 July
Terengganu	SGS (Malaysia) Sdn. Bhd.	1 April 2010	23-26 August
Kedah	SIRIM QAS International Sdn. Bhd.	9 June 2010	1-4 November
Pahang	SGS (Malaysia) Sdn. Bhd.	5 July 2010	4-8 October
Perak	SIRIM QAS International Sdn. Bhd.	7 July 2010	8-12 November
Selangor	SGS (Malaysia) Sdn. Bhd.	1 September 2010	25-27 October

In terms of area certified, as of December, a total of 4,232,952 ha of Permanent Reserved Forests (PRFs) in Malaysia had become PEFC-certified, with another 623,849 ha in the Kelantan FMU remaining MTCS-certified as shown in **Tables 2** and **3**.

The *Certificate for Forest Management* issued to the Anap-Muput FMU located in Sarawak was withdrawn on 23 November due to the failure of the FMU to undergo the Stage 2 audit within the stipulated time period.

**Table 2: PEFC-Certified FMUs**

No.	Name of FMU	Certificate Number	Area (ha)
1	Segaliud Lokan	FMC 001	57,247
2	Negeri Sembilan	FMC 002	154,185
3	Johor	SGS-MTCS/FM-0102	397,392
4	Terengganu	SGS-MTCS/FM-0103	521,582
5	Kedah	FMC 003	307,046
6	Pahang	SGS-MTCS/FM-0104	1,562,496
7	Perak	FMC 004	991,436
8	Selangor	SGS-MTCS/FM-0105	230,187
<b>Total Area Certified:</b>			<b>4,232,952</b>

**Table 3: MTCS-Certified FMU**

No.	Name of FMU	Certificate Number	Date of Issuance of Certificate	Area (ha)
1	Kelantan FMU	FMC 008	18 January 2008	623,849
<b>Total Area Certified:</b>				<b>623,849</b>

### Chain of Custody Certification

With effect from 31 January, the PEFC Council decided to transfer to MTCC the administration of four Malaysian companies which earlier on had been issued with the PEFC *Certificate for Chain of Custody* by PEFC Council-notified CBs, three by SGS South Africa (Pty) Ltd. and one by Japan Gas Appliances Inspection Association.

The objective of the transfer is to make the communication and relationship between the Malaysian holders of the PEFC-accredited certificates and MTCC more timely, efficient and user friendly. The four companies are Ta Ann Plywood Sdn. Bhd., Jinmei Industrial Sdn. Bhd., Times Offset (Malaysia) Sdn. Bhd. and Antalis (Malaysia) Sdn. Bhd.

As of December, with three certification bodies having been granted accreditation by the Department of Standards Malaysia (STANDARDS MALAYSIA) and notified by MTCC as PEFC-notified CBs, 125 PEFC *Certificates for Chain of Custody* were issued in 2010.

Of this total, 88 certificates were issued to the existing holders of the MTCS *Certificate for Chain of Custody*, while the remaining 37 were issued to new applicants. 104 companies were certified by SGS (Malaysia) Sdn. Bhd., 15 companies by SIRIM QAS International Sdn. Bhd., while the remaining six companies were certified by Moody International Certification (Malaysia) Sdn. Bhd.

With the addition of the new and transferred certificates, the number of PEFC *Certificate for Chain of Custody* holders increased to 160 by the end of December. The full list of the holders of the PEFC *Certificate for Chain of Custody* issued by the five PEFC-notified CBs is as shown in **Appendix I**.

In January, Certification and Timber Grading Ltd. (CATG), a PEFC-notified CB in the UK issued the MTCS *Certificate for Chain of Custody* to seven companies based in the UK. These companies are PEFC-certified companies but deal with MTCS-certified timber. The list of the seven companies is as shown in **Table 4**.

**Table 4: Holders of *Certificate for Chain of Custody* issued by MTCS-notified CBs**

No.	Company	Certificate Number	Date of Issuance of Certificate	Scope of Certification
1	International Plywood	CATG-MTCS-001	17 June 09	Sheet material, plywood, MDF, chipboard, OSB
2	JF Goodwillie Ltd.	CATG-MTCS-002	16 January 09	Softwood and hardwoods, sawn machined fencing strength graded PAR, sheet material
3	Beaumont Forest Products Ltd.	CATG-MTCS-003	10 November 09	Sawn and planed softwood and hardwood, fencing products, sheet materials, MDF
4	Timber Link International Ltd.	CATG-MTCS-004	11 December 09	Sawn softwood and hardwood, hardwood logs, machined hardwood and veneers
5	Harlow Brothers	CATG-MTCS-005	10 December 09	Softwood and hardwood sawn and machined, sheet materials, engineered products, decking, fencing, trusses, I beams
6	Murdock Builders Merchants Ltd.	CATG-MTCS006	25 February 10	Sawn and machined timber, processed timber, sheet materials and doors
7	Crawley Forest Products Ltd.	CATG-MTCS-007	3 September 10	Planed timber, sawn timber and sheet materials, scaffold boards, I beams

### Issuance of MTCC Logo Usage Licence

A total of 28 applications for the MTCC Logo Usage Licence were approved by the Notification Committee in 2010. Of the total, three MTCC Logo Usage Licences were issued to timber companies based in the UK which import MTCS-certified timber products. The three companies are:

- Beaumont Forest Products Ltd.
- Timber Link International Ltd.
- Murdock Builders Merchants Ltd.

The full list of the MTCC Logo Usage Licences issued by MTCC is as shown in **Appendix II**.

### Issuance of PEFC Logo Usage Licence

Beginning 1 July, following a decision made by the MTCC Board at its 43<sup>rd</sup> meeting, MTCC has started to impose a fee for the use of the PEFC Logo. The logo usage fee is in the form of a one-time issuance fee and an annual fee. The fee is charged to all the PEFC Logo users under the MTCS, i.e. both the certificate holders (for forest management and CoC) and non-certificate holders (certification bodies). The rates of the issuance fee and annual fee approved by the Board for a one-year period from July 2010 to June 2011, are as shown in **Table 5**.

**Table 5: PEFC Logo Usage Fee Schedule**

Logo User Category	Subset	Issuance Fee (RM)	Annual Fee (RM)
A. MTCC		-	-
B. Forest Management Certificates	Natural Forest and Forest Plantations	50.00	RM0.018 per ha of certified forest
C. CoC Certificates	Based on annual total turnover (RM):		
	Up to 5 Million	50.00	300.00
	Over 5 Million and up to 20 Million	50.00	500.00
	Over 20 Million and up to 50 Million	50.00	750.00
	Over 50 Million and up to 100 Million	50.00	1,000.00
	Over 100 Million	50.00	2,000.00
D. Other users	PEFC-notified CBs	50.00	500.00
	Other users	-	-

A total of 49 applications for the PEFC Logo Usage Licence was approved by the Notification Committee. Of this total, two PEFC Logo Usage Licences were issued to PEFC-notified CBs and one to a Forest Management Certificate holder, while the balance were to CoC certificate holders.

The full list of the PEFC Logo Usage Licences issued is as shown in **Appendix III**.

### Notification of Certification Bodies

The administration of PEFC certification against *Annex 4* in Malaysia which was carried out by the overseas-based PEFC-notified CBs before MTCS became endorsed by the PEFC Council was transferred to MTCC with effect from 15 October 2009. Both the PEFC CoC certification against *Annex 4* as well as forest management certification against the *MC&I(2002)* are required to be notified by MTCC. The transition period for the transfer of notification was until 31 December 2009, after which, beginning 1 January 2010, only certificates issued in Malaysia by CBs notified by MTCC are recognised by the PEFC Council. The two PEFC-notified CBs affected by the transfer of notification were Japan Gas Appliances Inspection Association and SGS South Africa (Pty) Ltd.

Moody International was granted accreditation by STANDARDS MALAYSIA to operate CoC certification under the MTCS on 8 August. It became a PEFC-notified CB on 20 August. Following its notification, Moody International obtained the PEFC Logo Usage Licence with the registration number PEFC/34-44-03 from MTCC on 27 August.

Scientific Certification Systems (SCS), a PEFC Council-notified CB based in the USA, was also notified as a PEFC-notified CB under the MTCS on 20 August 2010 to operate CoC certification in Malaysia. **Table 6** shows the number of CBs notified by MTCC as at 31 December.

**Table 6: PEFC and MTCS-notified CBs**

Type of Certification	PEFC-notified CB	MTCS-notified CB
Forest Management Certification	<ul style="list-style-type: none"> <li>SIRIM QAS International Sdn. Bhd.</li> <li>SGS (Malaysia) Sdn. Bhd.</li> </ul>	<ul style="list-style-type: none"> <li>SIRIM QAS International Sdn. Bhd.</li> <li>SGS (Malaysia) Sdn. Bhd.</li> </ul>
Chain of Custody Certification	<ul style="list-style-type: none"> <li>SIRIM QAS International Sdn. Bhd.</li> <li>SGS (Malaysia) Sdn. Bhd.</li> <li>Moody International Certification (Malaysia) Sdn. Bhd.</li> <li>Japan Gas Appliances Inspection Association</li> <li>SGS South Africa Pty Ltd - Qualifor Programme</li> <li>Scientific Certification Systems</li> </ul>	<ul style="list-style-type: none"> <li>SIRIM QAS International Sdn. Bhd.</li> <li>SGS (Malaysia) Sdn. Bhd.</li> <li>Moody International Certification (Malaysia) Sdn. Bhd.</li> <li>Certification and Timber Grading Ltd.</li> </ul>

MTCC continued to participate in the Technical Working Group (TWG) formed by STANDARDS MALAYSIA. In 2010, two documents entitled *Peer Review Process Requirements for Bodies Operating Forest Management Certification (Forest Plantations)* and *Requirements for Stakeholder Consultation for Forest Audit for Bodies Operating Forest Management Certification (Forest Plantations)* were discussed among the members of the TWG. The documents are expected to be finalised in 2011.



## EXPORT OF MTCS-CERTIFIED TIMBER PRODUCTS

The export of MTCS-certified timber products in 2010 showed a slight decrease, with the total export of 72,267 m<sup>3</sup> registering a 14.2% drop compared to the total export in 2009. No new destinations were added to the existing 22 countries comprising The Netherlands, Belgium, Germany, UK, France, Australia, Greece, Denmark, Poland, Italy, Norway, Indonesia, South Africa, South Korea, USA, Japan, Mauritius, New Zealand, Albania, Ireland, Singapore and Philippines.

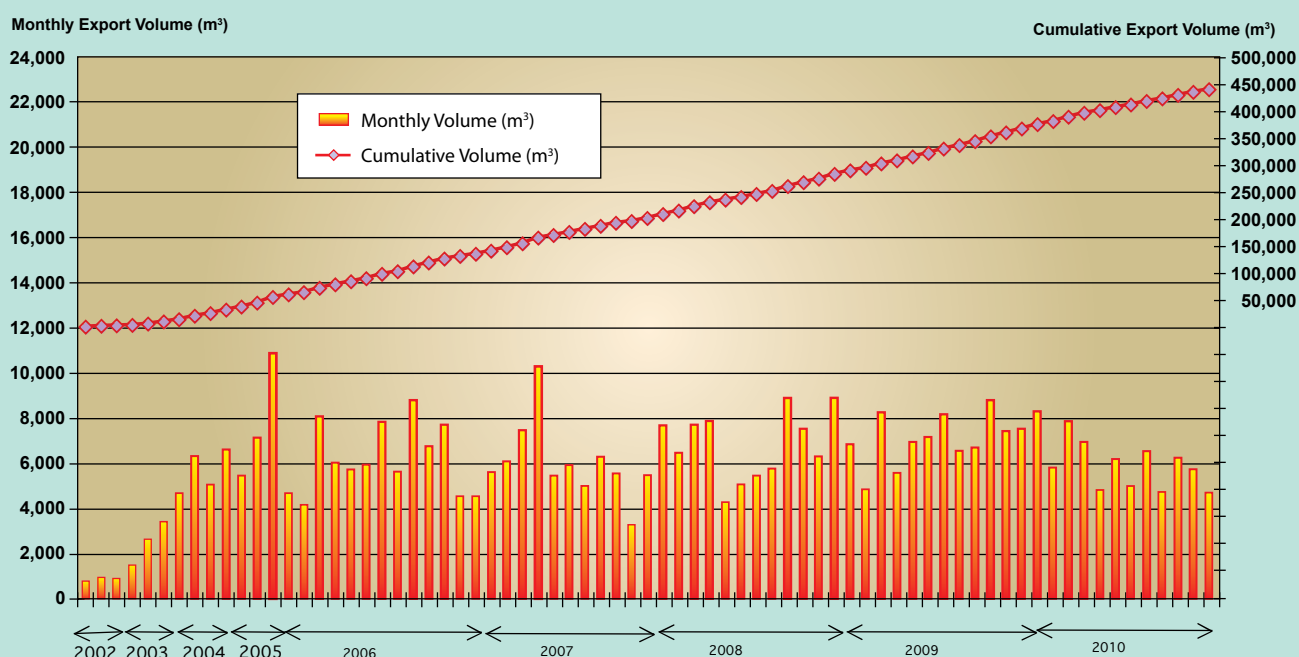
The Netherlands remained the largest market for MTCS-certified products, receiving 39,235 m<sup>3</sup> or 54.3% of the total MTCS-certified timber products exported in 2010. The highest volume exported was recorded for the month of January, totalling 8,280 m<sup>3</sup>.

Therefore, since July 2002, a total cumulative volume of 439,081 m<sup>3</sup> of MTCS-certified timber products had been exported by the end of 2010, with 219,823 m<sup>3</sup> (or 50.1%) of the total quantity exported going to The Netherlands, making it the biggest market.

The range of MTCS-certified timber products includes sawn timber, plywood, mouldings, veneer, laminated finger-jointed timber, finger-jointed dressed timber (S4S), furniture and furniture components, door and window components, picture frames and parquet flooring.

**Figure 1** shows the export of MTCS-certified timber products by month as well as the cumulative total since July 2002. **Figures 2** and **3** provide the percentage breakdown of the MTCS-certified products exported in 2010, by product type and by destination, respectively.

Figure 1: Export of MTCS-Certified Timber Products from July 2002 – December 2010



Source: MTIB & MTCC

Figure 2: Export of MTCS-Certified Timber Products by Product Type, 2010

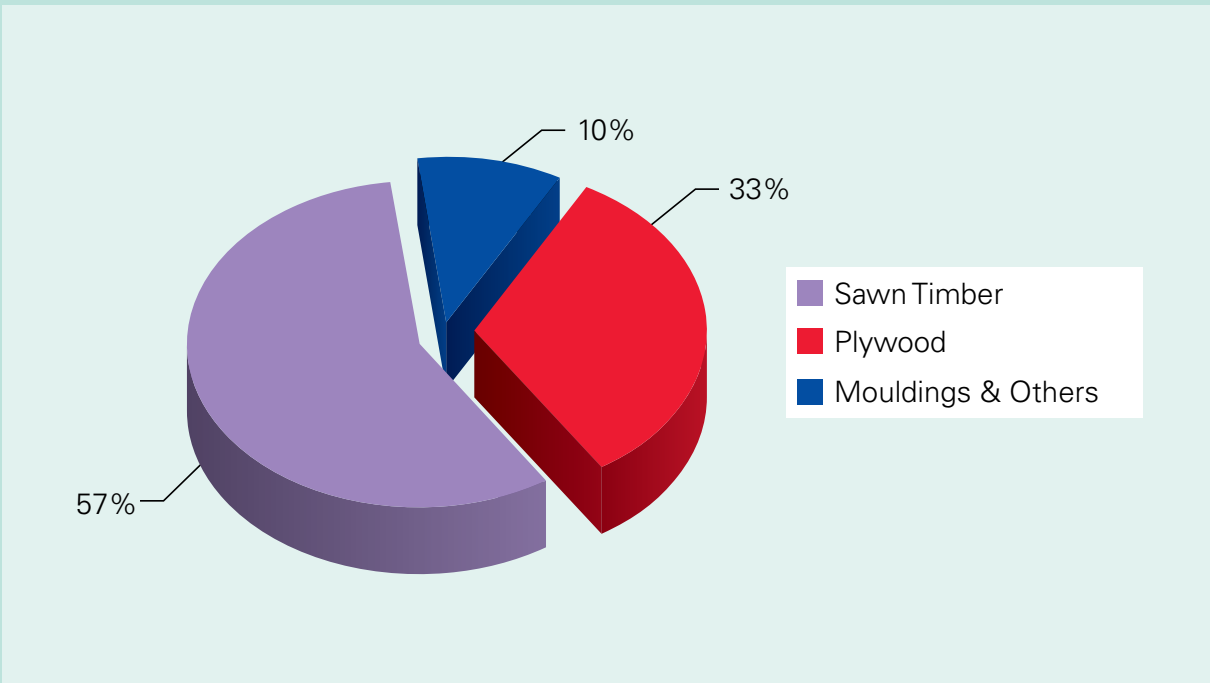
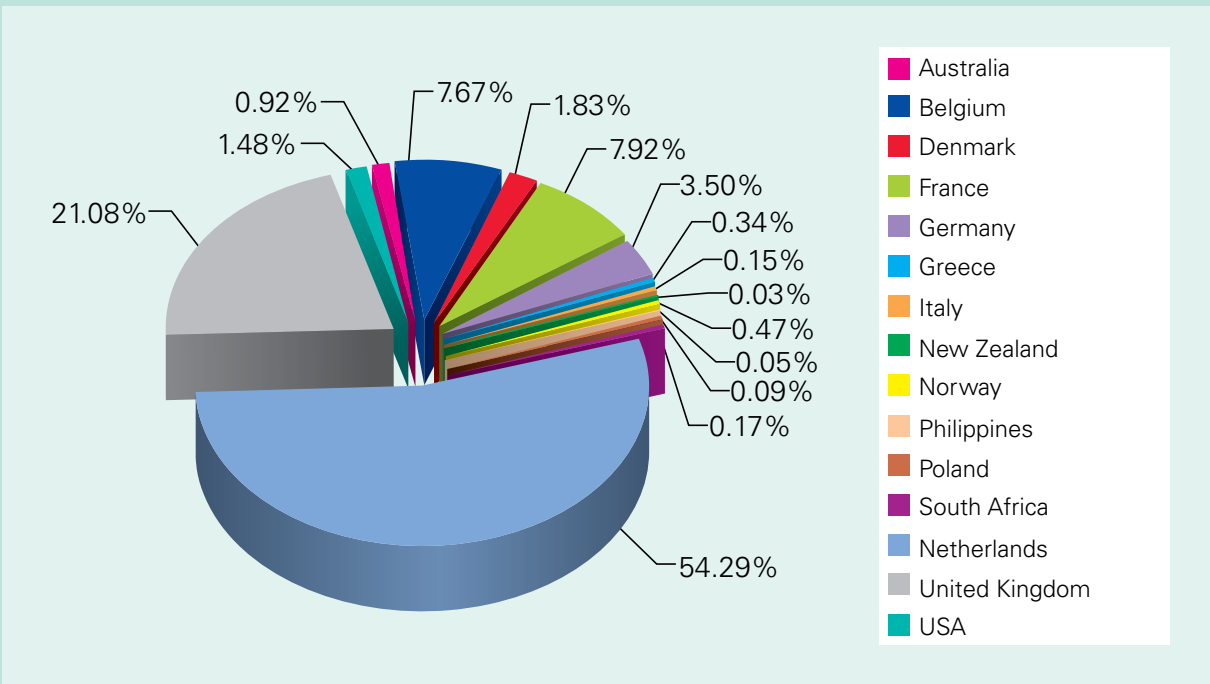


Figure 3: Export of MTCS-Certified Timber Products by Destination, 2010



## EXPORT OF PEFC-CERTIFIED TIMBER PRODUCTS

The year 2010 saw for the first time the export of PEFC-certified timber products from Malaysia under the MTCS since the scheme's endorsement by the PEFC Council in May 2009. A total of 2,510.73 m<sup>3</sup> of PEFC-certified timber products was exported. Belgium became the first destination to receive the PEFC-certified timber products. PEFC-certified products were also shipped to other markets including Italy, The Netherlands, Norway, the UK and the USA.

The highest volume of PEFC-certified timber products exported was recorded in September, totalling 870.18 m<sup>3</sup>. Meanwhile, of the total volume exported, 59.1% or 1,483.37 m<sup>3</sup> reached The Netherlands, making it the largest market for PEFC-certified products. Only PEFC-certified sawn timber and plywood have been exported so far, with the largest volume being plywood totalling 2,365.33 m<sup>3</sup> or 94% of the total export.

One of the first PEFC-certified consignments was shipped to Belgium by Low Fatt Wood Industries Sdn. Bhd. Since then, other PEFC certificate holders which have exported PEFC-certified timber products are Mentakab Veneer & Plywood Sdn. Bhd., Besgrade Products Sdn. Bhd., Costraco Sdn. Bhd. and Carl Ronnow (M) Sdn. Bhd. With more certificate holders obtaining the PEFC Logo Usage

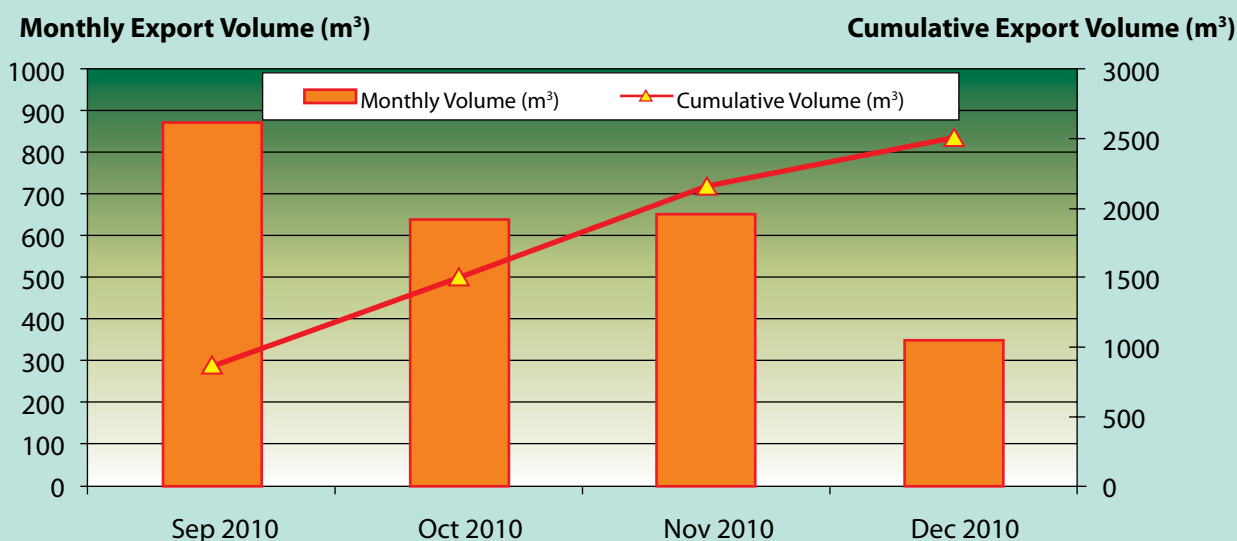


PEFC-certified timber  
(photo courtesy of Low Fatt Industries Sdn. Bhd.)

Licence, the export of PEFC-certified timber products from Malaysia under the MTCS is expected to increase in the coming years.

**Figure 4** shows the export of PEFC-certified timber products by month as well as the cumulative total since September. **Figures 5** and **6** provide the percentage breakdown of the PEFC-certified products exported in 2010, by product type and by destination, respectively.

Figure 4: Export of PEFC-Certified Timber Products, September – December 2010



Source: MTIB & MTCC

Figure 5: Export of PEFC-Certified Timber Products by Product Type, 2010

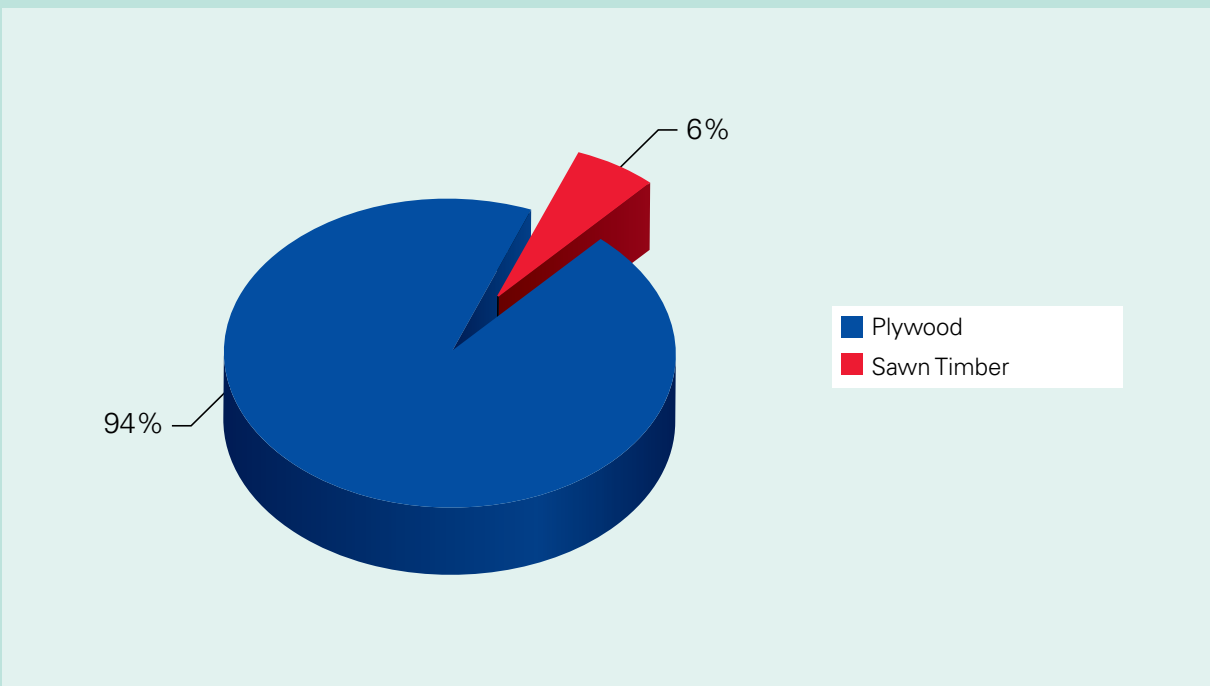
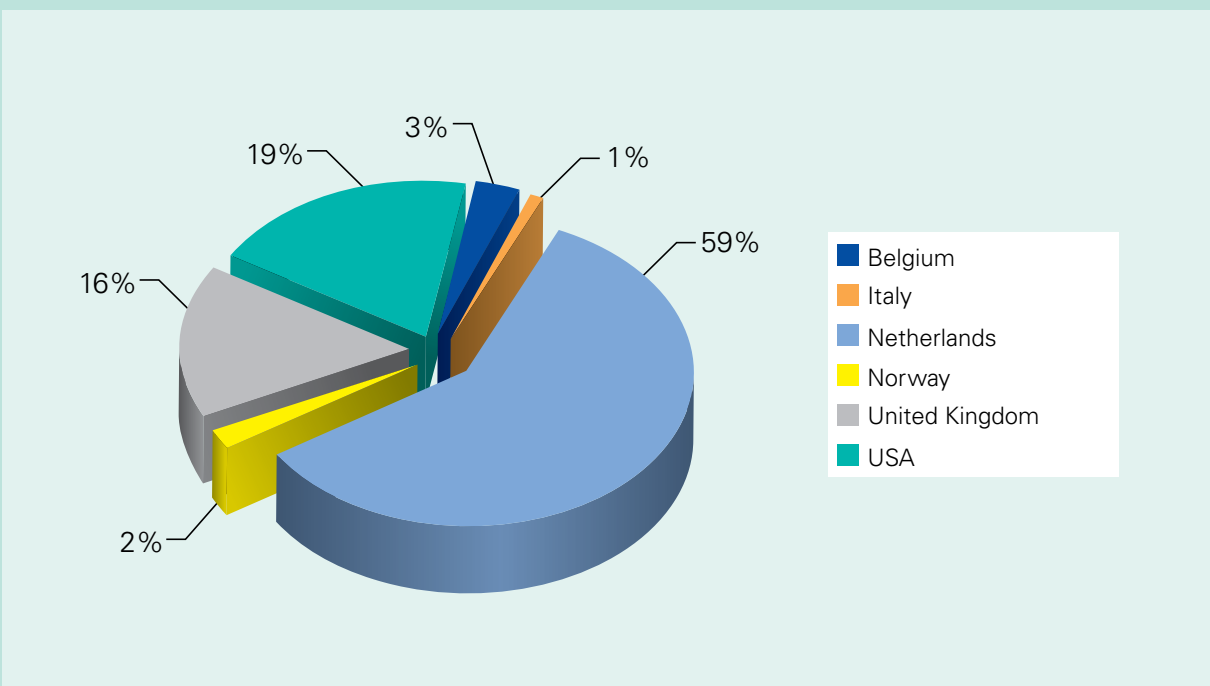


Figure 6: Export of PEFC-Certified Timber Products by Destination, 2010





## CERTIFICATION STANDARDS

### Review of Malaysian Criteria and Indicators for Forest Management Certification [MC&I(2002)]

In line with the process and timelines for the revision of the MC&I(2002), following the First Meeting of the Standards Review Committee (SRC) held in October/December 2009, the First Draft of the MC&I(Natural Forest) was subjected to a Second Public Comment from 10 March to 9 April.

All relevant stakeholder groups in Sabah, Sarawak and Peninsular Malaysia were informed of the Second Public Comment via air mail and email, and were invited to provide their comments on the First Draft of the MC&I(Natural Forest). The announcement on the Second Public Comment was also placed on the MTCC website.

Based on the Second Public Comment, feedback on the First Draft of the MC&I(Natural Forest) was received from the following stakeholder groups:

- Forestry Department Peninsular Malaysia
- Forestry Department Sabah
- Sarawak Forestry Corporation
- Forest Research Institute Malaysia
- Department of Irrigation and Drainage, Sabah
- Department of Labour, Sarawak
- Sarawak Biodiversity Centre
- Malaysian Nature Society



*Second Meeting of the Panel of Experts*

The Panel of Experts (PoE) held its Second Meeting on 29 April to consider all the comments received from the above stakeholder groups, and provided its opinions on all the comments received.

Based on the comments received from the stakeholder groups and the opinions of the PoE, the Secretariat prepared the Second Draft of the MC&I(Natural Forest). The Second Draft was subsequently subjected to three multi-stakeholder regional consultations in Sarawak, Sabah and Peninsular Malaysia which were held on 19-20 July, 22-23 July and 26-27 July, respectively. The regional consultations which were held in Kuching, Kota Kinabalu and Kuala Lumpur were attended by a total of 35, 23 and 39 participants respectively.

The main objective of the regional consultations was to obtain further comments and feedback from the various stakeholder groups on the Second Draft of the MC&I(Natural Forest), to supplement the comments that had been received during the Second Public Comment stage.

The regional consultations resulted in valuable comments and feedback on the Second Draft being received from the participants in the three regions, who represented the social, environmental and economic stakeholder groups and the relevant government agencies.

By the end of 2010, the Secretariat had consolidated the comments and feedback received from the regional consultations, which will be tabled for deliberation by the PoE, and subsequently for the consideration of the SRC in early 2011.



Regional Consultation in Kuching



Regional Consultation in Kota Kinabalu



Regional Consultation in Kuala Lumpur



### Update on the Endorsement of *MC&I*(Forest Plantations) by the PEFC Council

In order to extend the scope of coverage of the PEFC-endorsed MTCS to also cover the certification of forest plantations, in January, MTCC submitted the *Malaysian Criteria and Indicators for Forest Management Certification (Forest Plantations)* or in short the *MC&I*(Forest Plantations), for assessment by the PEFC Council.

The conformity assessment of the *MC&I*(Forest Plantations) was subsequently carried out by a PEFC-appointed consultancy firm, Indufor Oy from Finland, in August. The conformity assessment of the standard was conducted against the PEFC requirements in terms of rules and procedures for standard setting process, while the content of the standard was assessed against the *ITTO Guidelines for the Establishment and Sustainable Management of Planted Tropical Forest, 1993*.

In December, the consultant concluded the assessment by recommending that the PEFC Council should endorse the *MC&I*(Forest Plantations) as part of the PEFC endorsed MTCS under certain conditions.

### Project on *Formulation of Guidelines and Procedures for Social Impact Assessment and Monitoring of Forest Management Operations*

Under the MTCS, FMUs applying for forest management certification are required to comply with the requirements of the *MC&I*(2002) which places emphasis on the need to ensure that the three pillars of sustainability (i.e. environmental, social and economic aspects) are addressed during planning and implementation of all forestry operations.

On the social aspect, the *MC&I*(2002) stipulates the requirement for the FMU manager to conduct an assessment/evaluation of the social impacts of the forest management operations on the indigenous and local communities directly affected by the operations (Criterion 4.4). In addition, the standard also prescribes the need for monitoring procedures for assessing these impacts (Criterion 8.1).

In this connection, a project entitled *Formulation of Guidelines and Procedures for Social Impact Assessment and Monitoring of Forest Management Operations* was formulated and conducted under the Bilateral Cooperation Programme between the Ministry of Plantation Industries and Commodities (MPIC) and Universiti Putra Malaysia (UPM), with the main

objective of formulating guidelines and monitoring procedures for the conduct of social impact assessment/evaluation of forest harvesting operations on the indigenous and local communities living within and in the vicinity of the FMU.

The project has been designed to produce the following two instruments:

- Guidelines and procedures for conducting social impact assessment/evaluation of forest management operations on the communities directly affected by such operations
- Procedures for monitoring the effectiveness of measures taken to avoid or minimise social impacts of forest management operations.

The project involves the implementation of the following key activities in developing the two instruments:

- Conduct a literature review
- Organise and conduct local community discussion/consultation
- Organise and conduct a stakeholder workshop
- Develop instruments
- Conduct a pilot trial and finalisation of instruments

A total funding of RM 262,940 has been allocated from the Timber Export Levy Fund for the implementation of this project over a period of 16 months from January 2010 to April 2011. MTCC is the lead agency responsible for coordinating the implementation of this project, while the Institute of Tropical Forestry and Forest Products (INTROP), UPM was appointed as the executing agency on behalf of the UPM Consultancy Services Sdn. Bhd. (UPMCS).

A Project Technical Committee (PTC) was formed to provide expert advice and logistic support for the implementation of the project. The Members of the PTC comprise representatives from the Department of Orang Asli Development (JKOA), Forestry Department Peninsular Malaysia (FDPM), Forest Research Institute Malaysia (FRIM), UPMCS and MTCC. In 2010, the PTC held two meetings, on 11 May and 24 August.

The First Meeting discussed the need to conduct a Focus Group Discussion (FGD) with the local communities so as to ascertain the necessary information to be included in the formulation of relevant questionnaire. The FGD was subsequently conducted on 22-25 June in the Perak FMU, involving eight villages comprising four Orang Asli and four Malay villages. As a result of the FGD, a draft project instrument in the form of a *Questionnaire on Social Impact Assessment in Forest Operations* was formulated and tabled for deliberation at the Second PTC Meeting. The Meeting agreed that it should be subjected to a wider consultation involving other relevant stakeholder groups.

Subsequently, a Stakeholder Workshop was conducted on 18 October, which was attended by 42 participants representing various stakeholder groups. As a result of the feedback from the Workshop, the draft instrument was revised and later pilot tested on 21-24 December in four villages in the Pahang FMU.



*Project on Social Impact Assessment-Stakeholder Workshop. Seated from left to right, Prof. Mohd Basri Hamzah of INTROP, Chew Lye Teng, Dato' Dr. Hj. Abdul Rahman Hj. Abdul Rahim of FDPM, Assoc. Prof. Dr. Ahmad Ainuddin Nuruddin of INTROP and Dato' Dr. Freezailah*



*Participants during the Workshop*



*Chew Lye Teng delivering the welcome remarks during the Workshop*



# TRAINING

## Training on Forest Management Certification

MTCC conducted a total of three training courses in 2010 on the forest management certification standards used under the MTCS.

A two-day training course on the *MC&I*(Forest Plantations) which was attended by nine participants comprising auditors and staff of the Accreditation Division of STANDARDS MALAYSIA was held on 25-26 October in Cyberjaya. The training course focused on providing a clearer understanding on the requirements of the *MC&I*(Forest Plantations), and the requirements for accreditation of Certification Bodies (CBs) for forest management certification, currently covering natural forest to also cover forest plantations under the MTCS.

On 1-4 November, a four-day auditor training course on the *MC&I*(2002) was held in Ipoh, Perak, which was attended by nine auditors from three MTCS-notified CBs, i.e. SGS (Malaysia) Sdn. Bhd., SIRIM QAS International Sdn. Bhd. and Moody International Certification (Malaysia) Sdn. Bhd. The course placed emphasis and provided an in-depth explanation on the requirements of the *MC&I*(2002), including the appropriate auditing procedures to ensure a thorough assessment of each of the Indicators. Besides classroom lectures, the participants were also required to conduct a trial audit in the field (held in the Kuala Kangsar Forest District) on the third day and made presentations to highlight their audit findings on the final day of the course.

Similarly, a three-day auditor training course on the *MC&I*(Forest Plantations) was held in Temerloh, Pahang on 13-15 December. A total of six auditors from two MTCS-notified CBs, i.e. SGS (Malaysia) Sdn. Bhd. and SIRIM QAS International Sdn. Bhd. attended the course. Similar to the course on the *MC&I*(2002), this course also focused on providing a clearer understanding on the requirements and the appropriate auditing procedures for forest management certification using the *MC&I*(Forest Plantations). A trial audit was conducted in the forest plantations located in the Kemasul Forest Reserve and managed by AsiaPrima Resources Sdn. Bhd. Presentations on the audit findings were made on the last day of the course.

The two training courses for auditors were conducted by MTCC to enable the CBs to comply with the requirements of the ISO/IEC 17021 document for accreditation with STANDARDS MALAYSIA.



*Harnarinder Singh training auditors and staff of STANDARDS MALAYSIA*



*Group discussion to prepare audit findings (top),  
checking records of Removal Passes at  
Forest Checking Station, Sungai Siput (bottom)*



*Field visit to a R&D plot (left) and Orang Asli Village (right)  
during auditor training course on the *MC&I*(Forest Plantations)*



## Training by the PEFC Council on CoC Certification

A training session on CoC certification for CBs/auditors was held on 15 June in Kuala Lumpur, in conjunction with the PEFC Stakeholder Dialogue.

Jointly organised by MTCC and the PEFC Council, the training session was attended by a total of 30 auditors mainly from the PEFC-notified CBs, including SGS (Malaysia) Sdn. Bhd., SIRIM QAS International Sdn. Bhd., Moody International Sdn. Bhd., SGS (Indonesia), Japan Gas Appliances Inspection Association, Forest Research Institute Malaysia (FRIM) and Gaya Tunas Sdn. Bhd. Officers from the national accreditation body, STANDARDS MALAYSIA, also attended the training session.



*Jaroslav Tymrak of PEFC Council making his presentation*



*Participants during the training session*

The main aim of the training was to provide a better understanding to the CBs and auditors on the CoC interpretations and the upcoming joint IAF/PEFC accreditation requirements for CBs operating CoC certification against the PEFC Council's International CoC Standard. The training was conducted by Jaroslav Tymrak, Head of the PEFC Council Technical Unit.

## PROMOTION



*Discussion with UK timber trade representatives*

### Working Visit to Belgium, The Netherlands and United Kingdom

The Honourable Minister for Plantation Industries and Commodities, Tan Sri Bernard G. Dompok led a Working Visit to Belgium, The Netherlands and the UK on 11-20 November, involving the palm oil and timber industries. In the 23-member delegation, five delegates were from timber-related organisations, i.e. Datuk Wilfred Tangau, Chairman of the Malaysian Timber Industry Board (MTIB), Dr. Jalaluddin Harun, Director General of MTIB, Cheah Kam Huan, CEO of MTC and Sheam Satkuru-Granzella, Director of MTC London office. MTCC was represented by its CEO Chew Lye Teng.

For the timber industry, the main objectives of the Working Visit were:

- (i) to hold discussions with the relevant Ministers or EU Commissioners on matters affecting the timber trade such as the ongoing negotiations on the EU FLEGT VPA between the EU and Malaysia, the latest developments on the EU Due Diligence Regulation (DDR) (now re-named as the Timber Regulation), and the assessment of the MTCS under the TPAC; and
- (ii) to exchange information and views with the timber trade representatives about the current market for timber products and its prospects, the latest developments in the EU FLEGT VPA negotiations and the MTCS.

Tan Sri Dompok held a discussion with Janez Potocnik, EU Commissioner for Environment on the latest situation regarding the EU-Malaysia negotiations regarding the VPA. He also held a discussion with the Dutch State Secretary for Infrastructure and Environment, Joop Atsma regarding the developments related to the assessment of the MTCS by the TPAC.

In the United Kingdom, a discussion with the UK timber trade representatives was held to exchange views and information regarding the latest market situation and the outlook for 2011, as well as to provide information on the EU FLEGT VPA negotiations.



*Chew Lye Teng giving presentation during the Market Visit*

### MTC Market Visit to Singapore

MTC organised a Market Visit to Singapore from 1-3 September, during which a briefing and discussion on the Malaysian timber industry and the MTC Global Woodmart 2010 was held on 2 September. MTCC was invited to participate and make a presentation on the MTCS during the briefing session. CEO Chew Lye Teng represented MTCC for the Market Visit.

The briefing session was well-attended by 65 participants who were from the timber trade (members of the Singapore Timber Association, STA), architects, contractors [(members and staff of The Singapore Contractors Ltd., (SCAL)], Singapore Furniture Industries Council (SFIC), the Singapore Green Building Council (SGBC) and the Singapore Environment Council (SEC).

The discussions held during the Market Visit included the following:

- The possibility of Singapore-based timber companies being certified and allowed to use the PEFC Logo
- The possibility to include timber products certified under the MTCS into the Green Labeling scheme operated by the SEC
- To promote the MTCS with a view to be included into the Green Mark scheme operated by the SGBC

## Publicity Programmes / Exhibitions

Publicity brochures as well as information on the developments related to the MTCS were distributed during the fairs and exhibitions in which MTCC participated, such as:

- East Malaysia Planters' Association (EMPA) Conference, Tawau, Sabah (March)
- Malaysia Green Building Confederation (MGBC)-Green Building Index (GBI) Exhibition, Kuala Lumpur (May)
- SPOGA 2010, Cologne, Germany - Jointly with PEFC Germany (September)
- HOUT 2010, Rotterdam, The Netherlands - Jointly with MTC (September/October)
- MTC Global Woodmart, Kuala Lumpur (October)

At the international level, MTC continued to assist in distributing the MTCC brochures at a number of fairs and exhibitions in which MTC participated, such as:

- MADE, Milan, Italy (February)
- Kyung Hyang Housing Fair, Seoul, South Korea (February)
- Domotex Asia, Shanghai, China (March)
- Indiawood, Bangalore, India (March)
- Uzbuild, Tashkent, Uzbekistan (March)
- Woodshow, Dubai, UAE (April)
- Turkeybuild, Istanbul, Turkey (May)
- Carrefour Du Bois, Nantes, France (June)
- Designbuild, Melbourne, Australia (June)
- BuildAsia, Karachi, Pakistan (July)
- China International Building and Decorations Fair, Guangzhou, China (July)
- INDARCH, Mumbai, India (October)
- Japan Home and Building Show, Tokyo, Japan (November)
- Taipei International Building, Construction and Decoration Exhibition, Taipei, Taiwan (December)



MTCC display at EMPA Conference



MTCC booth at MGBC-GBI Exhibition



MTCC-PEFC Germany booth at SPOGA 2010



MTCC booth at HOUT 2010



MTCC booth at MTC Global Woodmart



---

## PROMOTION

---

In 2010, MTCC published six issues of the *MTCC News* to keep certificate holders and local stakeholder groups updated on the latest developments in the MTCS and matters related to timber certification and sustainable forest management (SFM).



## Publication

The following press releases/articles/information updates were issued by MTCC and were also posted on the MTCC website:

- *Announcement: Review of MC&I(2002) - Second Public Comment (March)*
- *MTCC optimistic of outlook for endorsement of MTCS by Dutch government (March)*
- *PEFC Stakeholder Dialogue: Development of Forest Certification in Asia Pacific & Revision of PEFC Requirements for Forest Certification Systems (April)*
- *Project on "Formulation of Guidelines and Procedures for Social Impact Assessment and Monitoring of Forest Management Operations" (May)*
- *Fees for use of PEFC Logo (July)*
- *Three more FMUs become PEFC-certified (August)*
- *Amendment to Scheme Document - MTCS 1/2009 (October)*
- *PEFC-certified timber from Malaysia arrives in Belgium (October)*
- *Basis of TPAC decision questioned by MTCC (October)*

The following press releases were issued by the MTCC's agencies in Germany (Kaisercommunication) and in The Netherlands (Smeets Stuger De Vries):

- *SPOGA 2010: Forest Certification Organisation PEFC Raffles a Two-Seater Swing Made of Sustainable Tropical Timber - issued by Kaisercommunication*
- *Basis of TPAC decision questioned by MTCC - issued by Smeets, Stuger De Vries*

Throughout 2010, the following print/online publications published editorials and special feature reports on MTCC and the MTCS:

- EUWID (Germany)
- Parkett Magazin (Germany)
- Holz-Zentralblatt (Germany)
- HoutWereld (The Netherlands)
- NRC Handelsblad (The Netherlands)
- Houtkrant (The Netherlands)
- Houthandel en Nijverheid (The Netherlands)
- L'Echo du Bois (Belgium)
- Malaysia SME (Malaysia)

### Participation in Conferences / Seminars / Workshops / Courses / Meetings

In 2010, MTCC participated in a number of international and local conferences, seminars, workshops, courses and meetings during which presentations on the MTCS and other activities were made. These included the following:

- Briefing on MTCS with special reference to forest conservation to Enforcement Training Workshop organised by Wildlife Conservation Society (WCS) Malaysia Programme, 4 March, Endau Rompin National Park
- Inaugural Dato' Ismail Awang Forestry Forum, 19 April, Putrajaya
- Ninth Meeting of the Working Group on a Pan ASEAN Timber Certification Initiative, 6-8 May, Phnom Penh, Cambodia
- Briefing to Undergraduates of Universiti Institut Teknologi MARA (UiTM) organised by Malaysian Timber Industry Board (MTIB), 13 May, Kuala Lumpur
- Lecture Series for the Lincoln Course at Sarawak Timber Association (STA), 12-13 July, Kuching
- Briefing on timber certification and sustainable forest management (for tertiary institutes) organised by MTIB, 28 July, Kuala Lumpur
- Pacific Rim Forestry Network Conference on Climate Change organised by Building and Wood Workers' International (BWI), 6-7 August, Jakarta, Indonesia
- MTC Market Visit to Singapore, 1-3 September, Singapore
- MTC Familiarisation Program for trade journalists, 14 & 20 October, Ipoh / Sungai Tekala
- Dialogue on Requirement for Timber Legality Verification, 18 October, Kuala Lumpur
- Meeting of Malaysia-Thai Parawood Committee, 20 October, Kuala Lumpur

MTCC also conducted the following seminars and briefing sessions in 2010:

- Briefing to Members of the STA on *MC&I*(Forest Plantation), 25-26 January, Kuching
- Briefing to Internal Auditors of Forestry Department Peninsular Malaysia (FDPM) on *MC&I*(2002), 18 March, Kepong
- Briefing to MTIB and Forest Plantation Development Sdn. Bhd. on *MC&I*(Forest Plantations), 26 March, Kuala Lumpur
- Briefing to Certificate Holders on *PEFC Logo Usage Fees under the MTCS*, 11 June, Kuala Lumpur
- Briefing to Sarawak Planted Forest Sdn. Bhd. on *MC&I*(Forest Plantations), 8-9 July, Bintulu



### PEFC PROMOTIONAL MATERIALS

PEFC is currently the largest certification scheme in the world. In 2010, significant increases of PEFC-certified forests occurred in Europe (+9.2 million ha), Australia (+2.8 million ha) and Malaysia (+4.2 million ha). The number of PEFC CoC certificates also increased by 24.7%. Asia accounted for the greatest increase in the number of CoC certificates (98%), followed by North America (24%) and Europe (20%).

As of 31 December, the PEFC Council had 35 national member countries of which 30 had been endorsed. PEFC produces a wide range of certified products for the environmental sensitive markets, which are now available in the market, as shown in the following promotional materials:

### Magazines and Catalogues



### Flyers and Advertisements



## Bags, Boxes and Packaging



## Do-It-Yourself (DIY) Products







## A collage of various stationery items including pens, pencils, notebooks, and planners. The items are arranged in a cluster, overlapping each other. There are two pens (one blue, one silver), a pencil, a red notebook, a black spiral notebook, a green and blue planner, and a red and white notebook. The background is a light blue gradient.

## RECOGNITION OF MTCS

As a result of MTCC's continuous efforts to promote and seek recognition of its scheme, authorities in the following countries recognise the MTCS:

### Denmark

As a PEFC - endorsed scheme, the Danish Ministry of the Environment, Forest and Nature Agency considers the MTCS as meeting the requirements for legal and sustainable timber under its revised *Guidelines on Public Procurement of Legal and Sustainable Timber*. (19 March 2010)



### United Kingdom

The report commissioned by the Central Point of Expertise on Timber (CPET), an expert group appointed by the Department for Environment Food and Rural Affairs (DEFRA), UK, continues to recognize MTCS as providing the assurance of legally harvested timber in the United Kingdom government's timber procurement policy. The 2008 review by the CPET has acknowledged that since the MTCS is in the process of introducing revised requirements, it will be able to provide evidence of sustainability once these revisions are fully in place.



The Royal Horticultural Society (RHS) of UK lists the MTCS as one of the seven recognised certification schemes in its *Conservation and Environment Guidelines*. (May 2005)

### France

The French Ministry of Environment and Sustainable Development and the Ministry of Agriculture, Food and Rural Affairs list the MTCS as one of the acceptable certification schemes in the *French National Timber Procurement Policy*. (December 2005)



### Japan

The MTCS is listed as one of the accepted certification schemes in the *Guideline for Verification on Legality and Sustainability of Wood and Wood Products* issued by the Forestry Agency, Ministry of Agriculture, Forestry and Fisheries, Japan. (April 2006)

### The Netherlands

The MTCS is accepted under the *Keurhout Protocol for Legal Origin (KH-LET) in The Netherlands*. In addition, eight forest management units and 12 *Certificates for Chain of Custody* under the MTCS are accepted under the *Keurhout Protocol for Sustainable Forest Management (KH-SFM)*. (March 2009)



The Dutch Ministry of Housing, Spatial Planning and Environment (VROM) accepts the MTCS as meeting the requirements for legality of timber. (April 2007)

### New Zealand

The Ministry of Agriculture and Forestry, New Zealand recognises the MTCS in its *Timber and Wood Products Procurement Policy*. (November 2008)



### Germany

As a PEFC - endorsed scheme, the MTCS is accepted under the German Federal public procurement policy for timber. (December 2009)  
The City of Hamburg fully accepts the MTCS in its procurement policy. (December 2009)

### Evaluation of the MTCS by the Timber Procurement Assessment Committee

The 13-month evaluation of the MTCS culminated in the TPAC issuing a Press Release on 3 March concluding that the MTCS complies with the requirements of the Dutch Timber Procurement Criteria. However, the TPAC made an additional comment that *“the certified forest area in Malaysia is not secured against politically-initiated forest conversion for (timber) plantations or infrastructure.”*

The TPAC recommendation was subsequently forwarded to the then Dutch Minister of Environment for a final decision. However, the newly appointed Minister (Tineke Huizinga) who took office on 23 February following the revamping of the Dutch government, did not make a decision on the TPAC recommendation regarding the MTCS. The stance taken by the Minister was different from the other schemes assessed prior to the MTCS, where the previous Minister made a decision on the assessed scheme shortly after receiving the recommendation made by the TPAC.

Following the announcement, an objection was filed on 9 April by a Dutch civil society coalition against the final judgement by the TPAC on the MTCS. The coalition lobbied the Dutch Minister to overrule the TPAC decision recommending the acceptance of the MTCS.

On 31 May, the Dutch Minister informed MTCC that as a result of the objection received, she had decided to postpone her decision on recognising MTCS timber as sustainable timber under the government’s procurement policy. The Minister iterated that as soon as the objection had been examined, she would consider the TPAC’s advice and decide whether the MTCS timber could be purchased under the sustainable timber procurement policy.

MTCC attended a public hearing on 14 September in The Hague to provide more detailed information on issues raised in the objection against the TPAC’s final judgement of the MTCS. The hearing, attended by representatives from the TPAC, the Dutch civil society coalition and MTCC, was chaired by Thijs Drupsteen, a former member of the Dutch Council of State (Raad van State) which provides advice to the Dutch Cabinet.

The TPAC issued a press release on 22 October in which it announced its revised final judgement that the MTCS had been found not to conform to the Dutch Criteria. It also stated that based on the TPAC decision, the newly appointed Dutch State Secretary for Infrastructure and the Environment, Joop Atsma, would decide whether MTCS-certified timber would be accepted under the Dutch sustainable timber procurement policy.

Subsequently, on 3 December, MTCC filed an appeal with the SMK Board of Appeal against the TPAC decision. According to the TPAC User Manual, after a hearing and within six months after an appeal has been filed, the Board of Appeal will come to a decision. If necessary, the term of six months can be extended with a maximum of two more months.



## CERTIFIED FORESTS UNDER VARIOUS CERTIFICATION SCHEMES

In the year 2010, the total area of certified forests worldwide increased to 374.63 million ha, up 7.2% from 2009 (349.58 million ha).

The 374.63 million ha certified represented nearly 10% of the total global commercial forest area. Of this total, 225.44 million ha (60.2%) were certified under the PEFC scheme, 143.27 million ha (38.2%) under the FSC scheme, 4.85 million ha (1.3%) under the MTCS, and 1.07 million ha (0.3%) under the Lembaga Ekolabel Indonesia (LEI) (**Figure 7**)<sup>1</sup>.

The PEFC-certified forests in Europe accounted for 65.95 million ha. Outside Europe, the PEFC-certified forests included 112.66 million ha under the Canadian Standards Association (CSA), 33.49 million ha under the Sustainable Forestry Initiative (SFI) and American Tree Farm System (ATFS) of the USA, 10.15 million ha under the Australian Forestry Standard (AFS), 1.91 million ha under the Chilean Standard for Sustainable Forest Management (CERTFOR), and 1.28 million ha under the Brazilian Programme of Forest Certification (CERFLOR)<sup>2</sup>. Of the total area certified under the MTCS, 4.23 million ha were PEFC-certified.

In terms of geographical distribution (**Figure 8**), still more than half (53.8%) of the world's certified forests were located in North America, with around one-third (34.4%) in the EU/EFTA region. The certified forests outside the EU/EFTA region and North America only accounted for 11.8% of the global total, of which 2.1% were in the Asia-Pacific region.

Figure 7: Certified Forests under Various Certification Schemes

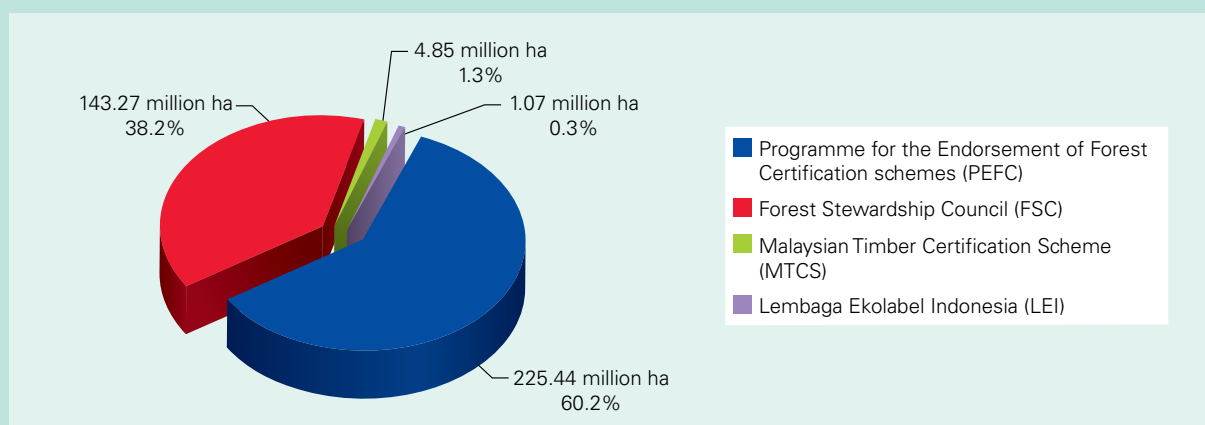
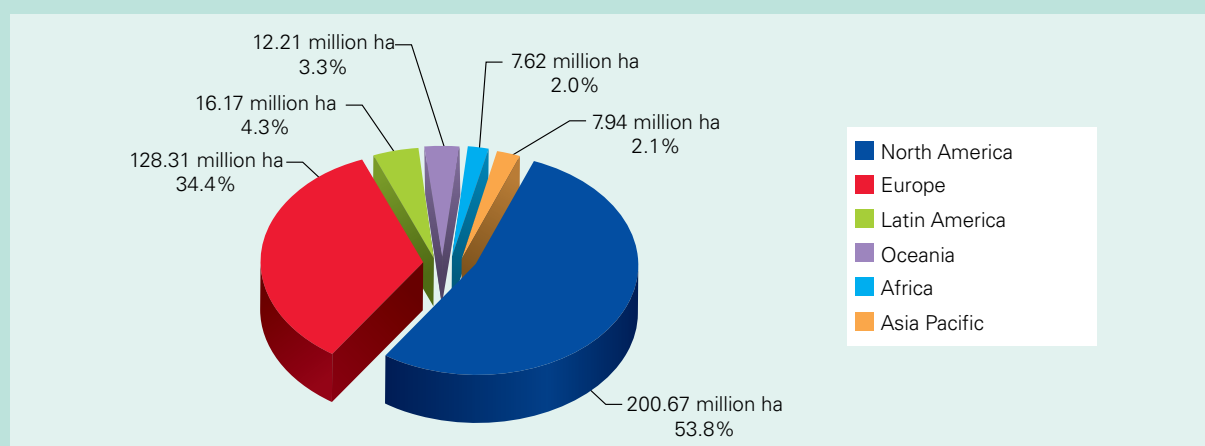


Figure 8: Geographical Distribution of Certified Forests



<sup>1</sup> The figures are based on the information available at the websites of the PEFC as at December 2010, FSC as at April 2011, and LEI as at February 2011

<sup>2</sup> Source: PEFC Council Annual Review 2010

## COOPERATION



*Ben Gunneberg giving presentation during the Dialogue*



*Panel Discussion*



*Roundtable discussion on SFM-boreal, temperate forests and plantations chaired by Dr. Hans Drielsma*



*Roundtable discussion on standard setting chaired by Jaroslav Tymrak*

### PEFC Stakeholder Dialogue in Kuala Lumpur

The PEFC Council and MTCC successfully co-hosted the PEFC Stakeholder Dialogue in Kuala Lumpur on 16 - 18 June. With the objective of providing an opportunity for broader promotion of the PEFC scheme as well as to disseminate general information about forest certification in the Asia Pacific region, the Dialogue was themed *Development of Forest Certification in Asia Pacific and Revision of PEFC Requirements for Forest Certification Systems*.

The Dialogue was the first to be held in the Asia Pacific region. Besides providing an overview of the development of forest certification in the Asia Pacific region and allowing for a good understanding and discussion on the PEFC enquiry drafts on the requirements for standard setting, group forest certification and sustainable forest management standards at a regional level, the Dialogue also provided an opportunity for the various countries in the region to share their experiences in the development of national schemes and standards. The Dialogue also aimed to encourage the stakeholders to participate in the on-going public consultation and to receive valuable feedback to the PEFC revision process. Prior to the Dialogue in Kuala Lumpur, PEFC had held three Stakeholder Dialogues, all in Europe, i.e. two in Geneva on 27 May 2009 and 26 May 2010, and one in Paris on 11 November 2009.

The Dialogue received overwhelming response and was attended by 112 representatives from the Malaysian stakeholder groups, i.e. environmental and social NGOs, relevant government agencies, timber trade associations, the national accreditation body, certification bodies and certificate holders under the MTCS, as well as participants from the Asia Pacific region i.e. from Japan, China, Philippines, Indonesia, Thailand, New Zealand and Australia.

On the first day of the Dialogue, a total of five presentations by speakers from PEFC International and countries in the Asia Pacific region, i.e. Malaysia (MTCC), China (State Forest Administration of China), Indonesia (Lembaga Ekolabel Indonesia - LEI) and Australia (Australian Forestry Standard - AFS) were featured. Ben Gunneberg, Secretary General of the PEFC Council presented a paper on *Linking National Certification Systems to the Global Community* which touched on the current challenges in forest certification such as the certification effort being mainly focused on temperate and boreal forests which are concentrated in Western Europe and North America. The presentation also emphasised that certification can facilitate better market access in view of the proliferation of legislation and procurement policies requiring legal and sustainable timber. The subsequent four speakers spoke on their experiences in the implementation of timber certification, including the challenges and achievements in developing their certification initiatives.

On the second day, four roundtable discussions took place, dealing with standard setting, group forest certification, SFM - boreal, temperate forests and plantations, and SFM - natural tropical forests, to discuss the following critical issues concerning the PEFC standards revision process:



*Roundtable discussion on group certification chaired by Ben Gunneberg*



*Roundtable discussion on SFM-natural tropical forests chaired by Harnarinder Singh*

- how to ensure balanced stakeholder representation and participation in developing national standards, including building consensus and decision making, ensuring transparency and dealing with key but disadvantaged stakeholders
- how to deal with the concept of group certification, including meeting the requirements for participation covering size and type of forest area (natural forest or forest plantation) and forest ownership (state-owned or privately-owned), and number of group participants
- whether the requirements for SFM standards should entail two separate documents (one for temperate, boreal and plantation forests, and the other specifically for tropical natural forests), or should there be only one meta standard for all forest types, or should there be one meta standard for natural forests and another for forest plantations
- how detailed the SFM meta standard should be and how it should be structured, i.e. to reflect principle and criterion levels, or criterion and guideline levels, or should a third level (i.e. the indicator level) also be included
- ensuring basic labour, health and safety standards in all forestry operations, as well as how to deal with the issue of forest conversion.

The participants were informed that a working group had been set up under the PEFC to consider all comments received from the various public consultations during the revision process, and that the final draft will be

submitted to the PEFC Board of Directors for its consideration before putting it up for formal voting at the PEFC General Assembly.

On the third day the participants visited two forest areas in the MTCS-certified Selangor FMU. They first visited compartment 18 of the Bukit Lagong Forest Reserve, which was recently subjected to a second rotation harvesting, to see the conditions of the residual forest stand and management activities conducted there. In the second area visited in compartment 7 of the Kanching Forest Reserve, the participants were shown the condition and stocking of a well-regenerated forest.



*Field trip to MTCS-certified forest in the Selangor FMU*



### Ninth Meeting of the Working Group on a Pan ASEAN Timber Certification Initiative

The Ninth Meeting of the Working Group (WG) on a Pan ASEAN Timber Certification Initiative was held in Phnom Penh, Cambodia on 6-8 May. It was attended by delegates from eight ASEAN Member States, i.e. Brunei Darussalam, Cambodia, Indonesia, Lao PDR, Malaysia, Myanmar, Philippines and Thailand, and the ASEAN Secretariat. A representative from the EU FLEGT Asia Programme was also present at the open session of the Meeting.

The WG discussed the draft *ASEAN Chain of Custody Guidelines for Legal Timber and Sustainable Timber* and agreed that the document should be treated only as a reference by the ASEAN Member States in developing their respective national standards for CoC for legal timber and sustainable timber.

With regard to the finalisation of the draft *CoC Guidelines*, the Meeting agreed for all the ASEAN Member States to provide their comments and inputs to Malaysia which will circulate the consolidated draft document for finalisation and adoption by the Member States. The WG agreed on the action and timelines so as to facilitate the submission of the document by Malaysia, as the lead country, for the endorsement by the 13<sup>th</sup> ASEAN Senior Officials on Forestry (ASOF) meeting.

There was also exchange of information and experience by Malaysia and Indonesia on their respective experiences in negotiating with the EU on the VPA, and also the impact of the Lacey Act amendment and the regulatory procedures issued by the USA since December 2008, particularly on the timber trade and export market.

Realising that some ASEAN Member States were already implementing measures to verify legality of timber under other initiatives such as the EU FLEGT VPA, the Meeting requested the ASEAN Secretariat to clarify and seek flexibility on the relevant measures listed in the AEC Blueprint.

The EU FLEGT Asia Programme representative proposed a workshop/training event on the development of national timber legality standards for the Mekong region, based on the ASEAN Criteria and Indicators (C&I) for timber legality. The WG supported the proposal and recommended the inclusion of participants from other Member States in the workshop. The Meeting also welcomed and supported the proposal made by Indonesia to conduct field training as a comparative exercise on ASEAN's and Indonesia's Timber Legality Standards at the FMU level.



ASEAN delegates at the Ninth Meeting of the Working Group



Dato' Freezailah delivering the opening remarks



Chew Lye Teng sharing Malaysia's experience with the ASEAN Member States



Working Group in session







## SIGNIFICANT EVENTS

MTCC organised/coordinated the following local events in 2010:

Local Events	Date	Venue
Briefing to Members of the Sarawak Timber Association (STA) on <i>MC&amp;I</i> (Forest Plantations)	25 - 26 January	Kuching
Briefing to officers of Forest Plantation Division, Malaysian Timber Industry Board (MTIB) on <i>Criteria and Procedures in applying for FMC and COC</i>	26 March	Kuala Lumpur
Briefing to Internal Auditors of Forestry Department Peninsular Malaysia (FDPM) on <i>MC&amp;I</i> (2002)	18 March	Kepong
Briefing to MTIB and Forest Plantation Development Sdn. Bhd. on <i>MC&amp;I</i> (Forest Plantations)	26 March	Kuala Lumpur
Second Meeting of the Panel of Experts on the Review of the <i>MC&amp;I</i> (2002)	29 April	Kuala Lumpur
Briefing to Certificate Holders on <i>PEFC Logo Usage Fees under the MTCS</i>	11 June	Kuala Lumpur
Training course on Chain of Custody Certification for auditors (jointly with PEFC)	15 June	Kuala Lumpur
PEFC Stakeholder Dialogue and Field Visit (jointly with PEFC)	16 - 18 June	Kuala Lumpur
Briefing on <i>MC&amp;I</i> (Forest Plantations) to Sarawak Planted Forest Sdn. Bhd.	8 - 9 July	Bintulu
Regional Consultations on the Review of the <i>MC&amp;I</i> (2002)	19 - 20 July	Kuching
	22 - 23 July	Kota Kinabalu
	26 - 27 July	Kuala Lumpur
Stakeholder Workshop on <i>Formulation of Guidelines and Procedures to Assess and Monitor Social Impact of Forest Management Operations</i>	18 October	Kuala Lumpur
Training on <i>MC&amp;I</i> (Forest Plantations) for officers of Accreditation Division, STANDARDS MALAYSIA	25 - 26 October	Cyberjaya
Auditor Training Course on <i>MC&amp;I</i> (2002)	1 - 4 November	Ipoh
Auditor Training Course on <i>MC&amp;I</i> (Forest Plantations)	13 - 15 December	Temerloh



### Visit by YB Senator Dato' G. Palanivel, Deputy Minister of Plantation Industries and Commodities

MTCC was honoured to receive a visit by YB Senator Dato' G. Palanivel, Deputy Minister of Plantation Industries and Commodities on 29 June.

MTCC CEO Chew Lye Teng briefed the Deputy Minister on the set up of the MTCC and the operation of the MTCS (left). YB Dato' Palanivel was also presented with the MTCC Tenth Anniversary commemorative book (right).

MTCC held discussions with the following visitors in 2010:

Visitors	Date
Ernest Chai, Consultant Anthony Chia, Daiken Sarawak Goro Higaki, Daiken Sarawak	28 January
Dato' Haji Sarudu Haji Hoklai, General Manager of Sarawak Timber Industry Development Corporation (STIDC)	5 March
John Stewart and Leong Lai Fun, Al Ahmadiyah Contracting and Trading, Abu Dhabi (meeting held at MTC office)	12 March
Ogawa Shun, Embassy of Japan, Kuala Lumpur Hiroshi Kusakabe, Agriculture, Forestry, Fisheries and Environment, Japan	17 March
Ogawa Shun, Embassy of Japan, Kuala Lumpur Yoshimitsu Kawamoto, Consulate-General of Japan, Kota Kinabalu	14 April
Joseph Thomas, Det Norske Veritas Pte Ltd (DNV), Singapore	20 April
Naoki Yamamoto, ITOCHU Forestry Corporation, Japan	22 April
Alvin Yii and Sim Leng Yan, Shin Yang Plywood Sdn. Bhd., Sarawak	4 May
Peter Ling Kwong Hung, WTK, Sarawak	18 June
Philip Vaughan, Travis Perkins, UK	29 July
Niels Boelema, Jongeneel Group / Central Import Panelproducts, The Netherlands	1 September
Guntram Kaiser, KaiserCommunication, Germany	15 October
Delegation from the Myanmar Timber Merchants Association: <ul style="list-style-type: none"> <li>Nay Htun Min</li> <li>Zaw Win</li> <li>Barber Cho</li> <li>Soe Yee</li> </ul>	20 October
Jurgen de Vries, Smeets Stuger De Vries, The Netherlands	21 October
Milena Sosa Schmidt, Convention on International Trade in Endangered Species of Wild Fauna and Flora (CITES) Secretariat	6 December
Anthony Sebastian, Forest Sustainability (Malaysia) Sdn. Bhd.	9 December
Gemma Boetekees, FSC International Center GmbH, Bonn, Germany	10 December
Interview with the Malaysian Furniture Export Association (MFEA) Yap Suk Ching	13 December
Malaysian Palm Oil Board (MPOB): <ul style="list-style-type: none"> <li>Datuk Dr. Mohd Basri Wahid</li> <li>Ainie Hj. Kuntom</li> </ul>	14 December

## SIGNIFICANT EVENTS

MTCC participated in the following international events in 2010:

Events	Date	Venue
Ninth Meeting of Working Group on a Pan ASEAN Timber Certification Initiative*	6 - 8 May	Phnom Penh, Cambodia
PEFC National Members Meeting	26 - 29 May	Geneva, Switzerland
Pacific Rim Forestry Network Conference on Climate Change organised by Building and Wood Workers' International (BWI)*	6 - 7 August	Jakarta, Indonesia
MTC Market Visit to Singapore*	1 - 3 September	Singapore
Public Hearing - TPAC assessment of the MTCS	14 September	The Hague, Netherlands
Working Visit to Europe (Ministry of Plantation Industries and Commodities)	11 - 20 November	Belgium, The Netherlands and United Kingdom
Forty-Sixth Session of International Tropical Timber Council (ITTC) and Associated Sessions of the Committees	13 - 18 December	Yokohama, Japan

\* MTCC made presentation on the MTCS and related activities at the event

MTCC participated in the following events within Malaysia in 2010:

Conferences/Seminars/Workshops/Meetings	Date	Venue
Briefing on Malaysia Green Building Index (GBI) by MTIB*	5 February	Kuala Lumpur
Technical Working Group Meeting for the Conservation of Biodiversity Project – UNDP-GEF-FRIM	9 February	Kepong
Outreach Workshop of Transparency International on Anti-corruption tools in forestry	25 February	Kuala Lumpur
Briefing on MTCS with special reference to forest conservation to Enforcement Training Workshop organised by Wildlife Conservation Society (WCS) Malaysia Programme*	4 March	Endau Rompin National Park, Johor
Conference on the role of professionals in GBI Malaysia	17 March	Selangor
Commodity Laboratory (Timber) by MPIC	29 - 31 March	Kuala Lumpur
Inaugural Dato' Ismail Awang Forestry Forum*	19 April	Putrajaya
Briefing on <i>International Trade in Endangered Species Act</i> (Act 686) by MTIB	4 May	Kuala Lumpur
Nature Science lecture 2010 by Datuk Seri Lord Cranbrook organised by Sarawak Natural Science Society and UPM Bintulu campus	5 May	Bintulu
Briefing to undergraduates of Universiti Institut Teknologi MARA (UiTM) organised by MTIB*	13 May	Kuala Lumpur
Lecture Series for the Lincoln Course at Sarawak Timber Association (STA)*	12 - 13 July	Kuching

Conferences/Seminars/Workshops/Meetings	Date	Venue
MFPC Seminar on <i>Strategies to Succeed in the German Furniture Market</i>	13 July	Kuala Lumpur
Briefing session on market regulations in the EU and US organised by MTC	16 July	Kuala Lumpur
Forum 2010 STANDARDS MALAYSIA with Certification Bodies in Malaysia	26 July	Putrajaya
<i>Briefing on timber certification and sustainable forest management</i> (for tertiary institutes) organised by MTIB*	28 July	Kuala Lumpur
Seminar on FRIM Research Projects - Towards Sustainable Forest Management	3 - 5 August	Kuantan
Workshop on Indonesia-Malaysia Timber Trade and Adaptation of FGI Tools organised by the Transparency International-Malaysia and Malaysia Anti-Corruption Commission	4 - 5 August	Kuala Lumpur
Malaysian Palm Oil Council (MPOC)-Wild Asia Training Workshop on "Biodiversity for Busy Managers" - Enhancing Biodiversity in a plantation landscape	22 - 23 September	Miri
MTC Timber Talk Series: <i>Timber - a Reliable Structural Material</i>	29 September	Kuala Lumpur
International Symposium on Forestry & Forest Products jointly organised by FDPM, FRIM, MTIB and MTC	5 - 7 October	Kuala Lumpur
Malaysian Nature Society (MNS) International Conference	8 - 9 October	Kuala Lumpur
Stakeholder Consultation, Conservation of Biodiversity project	11 October	Kuala Lumpur
MTC Familiarisation Program for trade journalists*	14 & 20 October	Ipoh/Sungai Tekala
Dialogue on Requirement for Timber Legality Verification*	18 October	Kuala Lumpur
Meeting of Malaysia-Thai Parawood Committee *	20 October	Kuala Lumpur
The International Conference on Forest and Climate Change - Decoding and Realising REDD+ in the Heart of Borneo (HOB) with specific focus on Sabah	8 November	Kota Kinabalu
Fourth Workshop on Conflict Resolution guidelines for sustainable forest management by Sarawak Forestry Corporation (SFC)	12 November	Miri
Regional Workshop on the Sharing of Findings from the Activities Implemented in Indonesia and Malaysia under the ITTO-CITES Project	1 - 4 December	Kuantan
Seminar on Indigenous Peoples' Rights organised by the European Union (EU) and the Human Rights Commission of Malaysia	2 December	Kuala Lumpur
Talk on Sustainability by WWF & the launch of the Malaysian Dutch Business Council (MDBC) Business Directory 2010/11	17 December	Kuala Lumpur

\* MTCC made presentation on its scheme and related activities at the event

## SIGNIFICANT EVENTS

MTCC participated in the following fairs/exhibitions in 2010:

Fairs/Exhibitions	Date	Venue
East Malaysia Planters' Association (EMPA) Conference exhibition	22 March	Tawau
Malaysia Green Building Confederation (MGBC)- Green Building Index (GBI) Exhibition	4 - 6 May	Kuala Lumpur
SPOGA 2010	5 - 7 September	Cologne, Germany
HOUT 2010	27 September - 1 October	Rotterdam, The Netherlands
MTC Global Wood Mart	19 - 20 October	Kuala Lumpur



*Chew Lye Teng making his presentations at the Pacific Rim Forestry Network Conference on Climate Change organised by BWI, Jakarta (left) and at the Inaugural Dato' Ismail Awang Forestry Forum, Putrajaya (right)*



*Yong Teng Koon briefing trade journalists on tree tagging during MTC Familiarization Programme, Ipoh*



*Dato' Haji Sarudu Haji Hoklai, General Manager, STIDC having discussion with Dato' Dr. Freezailah*



*Participants at the briefing session to Members of the STA on MC&I (Forest Plantations)*



321.2321.21 659532525  
235.6235.654 888523636  
789.2789.25 453232  
32563256.124 1124214545  
124.3124.3258 653522525  
456.2456.257 445252.2  
147.2147.258 857532626  
159.3159.357 993926565  
456.2456.215 14526565  
501.3501.3259 1523214444  
982.3982.354 54624848  
501.3501.3269 50136565  
1012.31012.324 45532525  
573.3573.326 983321077  
451.2451.268 252132508  
542.3542.316 104126565  
769.2769.254 654526363  
596.3596.325 216545232  
146.3146.356 648645.6  
206.3206.335 6050455454  
489.3489.326 9875320616  
263.5263.513 654514545  
548.3548.326 314156454  
159.3159.326 143421818  
596.3596.325 6685865454  
489.3489.326 549891414  
159.3159.326 1574716565  
154.3154.326 234338484  
862.3862.325 3433434  
751.2751.264 54568787  
236.1236.148  
1434.1434.18  
66856685.654  
54985498.14  
1574.1574.165  
234.3234.384

RM

AB

# FINANCIAL STATEMENTS

## STATEMENT OF FINANCIAL POSITION AS AT 31 DECEMBER 2010

	2010 RM	2009 RM
<b>ASSETS</b>		
<b>Non-current asset</b>		
Property, plant and equipment	2,726,013	53,484
<b>Current assets</b>		
Trade receivables	19,780	25,501
Sundry receivables and deposits	304,596	5,288,774
Short term investments	18,073,916	16,727,951
Deposits	67,769,762	65,124,369
Cash and bank balances	355,261	493,785
<b>Total current assets</b>	86,523,315	87,660,380
<b>TOTAL ASSETS</b>	<b>89,249,328</b>	<b>87,713,864</b>
Endowment fund	84,000,000	84,000,000
Accumulated fund	4,738,367	3,333,314
<b>Total equity</b>	88,738,367	87,333,314
<b>Current liabilities</b>		
Sundry payables and accruals	495,209	367,985
Current tax liability	15,752	12,565
<b>Total liabilities</b>	510,961	380,550
<b>TOTAL EQUITY AND LIABILITIES</b>	<b>89,249,328</b>	<b>87,713,864</b>

STATEMENT OF COMPREHENSIVE INCOME  
FOR THE YEAR ENDED 31 DECEMBER 2010

	2010 RM	2009 RM
Revenue	72,530	44,525
Direct costs	(734,515)	(118,312)
Gross loss	(661,985)	(73,787)
Other income	4,013,707	3,828,795
Administrative and general expenses	(2,669,097)	(2,753,165)
Surplus before tax	682,625	1,001,843
Tax expense	(3,187)	(3,229)
<b>SURPLUS FOR THE YEAR</b>	<b>679,438</b>	<b>998,614</b>
Other comprehensive income for the year, net of tax	-	-
Total comprehensive income for the year	679,438	998,614

## APPENDIX I

### Holders of PEFC Certificate for Chain of Custody

No.	Company	Certificate Number	Date of Issuance of Certificate	Scope of Certification
1	Ta Ann Plywood Sdn. Bhd.	CEF0606A	21 Aug 06	Manufacturing of plywood
2	Antalis (Malaysia) Sdn. Bhd.	SGS-PEFC/ COC-0566	1 Aug 08	Purchase and sale of PEFC paper and paper board
3	Times Offset (Malaysia) Sdn. Bhd.	SGS-PEFC/ COC-0593	17 Aug 08	Purchase of PEFC paper and paper board, processing and sales of PEFC certified books, magazines and printed matter printing using physical separation method based on Appendix 1, Annex 4, Section 2, (certified material) of the chain of custody standard
4	Jinmei Industrial Sdn. Bhd.	SGS-PEFC/ COC-0933	7 Jul 09	Purchase of PEFC certified paper rolls and semi finished paper sheets. Process & sales of PEFC certified tissue paper, diary & stationeries products
5	Unsur Juta Sdn. Bhd.	FCOC 001	04 Nov 09	Trading of plywood, veneer and blockboard
6	Magna-Foremost Sdn. Bhd.	FCOC 002	04 Nov 09	Manufacture and export of moulded fibreboard door skin
7	Lengkap Arif Sdn. Bhd.	FCOC 003	04 Nov 09	Manufacture of sawn timber
8	Besgrade Products Sdn. Bhd.	FCOC 004	04 Nov 09	Manufacture of plywood
9	Yee Poh Timber Sdn. Bhd.	FCOC 005	04 Nov 09	Trading of sawn timber
10	Tandem Holdings Sdn. Bhd.	FCOC 006	04 Nov 09	Manufacture and export of solid wood joinery and moulding and housing components
11	Euro Asia Timber Export Sdn. Bhd.	FCOC 007	04 Nov 09	Trading of sawn timber
12	Samling Plywood (Baramas) Sdn. Bhd.	FCOC 008	04 Nov 09	Manufacture and export of plywood
13	Kilang Papan Datuk Wan Ahmad (Raub) Sdn. Bhd.	FCOC 009	04 Nov 09	Manufacture and export of sawn timber and solid wood mouldings

No.	Company	Certificate Number	Date of Issuance of Certificate	Scope of Certification
14	Maju Weko Timber Industries Sdn. Bhd.	FCOC 010	04 Nov 09	Manufacture of sawn timber, solid wood mouldings, laminated and finger-jointed timber
15	Golden Latitude Sdn. Bhd.	FCOC 011	04 Nov 09	Trading of sawn timber and manufacturer and export of solid wood mouldings
16	Firmwood Sdn. Bhd.	FCOC 012	04 Nov 09	Trading of sawn timber
17	Komill Corporation Sdn. Bhd.	FCOC 013	04 Nov 09	Trading of sawn timber, dressed timber, solid wood mouldings and finger-jointed and laminated mouldings
18	Dyera - Tim Sdn. Bhd.	FCOC 028	05 Nov 09	Export of sawn timber and solid wood moulding
19	Shin Yang Plywood (Bintulu) Sdn. Bhd.	FCOC 029	05 Nov 09	Manufacture and export of veneer and plywood
20	MTME Point Sdn. Bhd.	FCOC 030	09 Nov 09	Manufacture and export of sawn timber
21	Kilang Papan Low Fat Sdn. Bhd.	FCOC 022	19 Nov 09	Manufacture and export of sawn timber
22	Low Fatt Wood Industries Sdn. Bhd.	FCOC 023	19 Nov 09	Export of sawn timber and manufacture and export of timber moulding and furniture
23	Shin Yang Plywood Sdn. Bhd.	FCOC 024	19 Nov 09	Manufacture and export of plywood and laminated veneer lumber (LVL)
24	Gunung Seraya Wood Products Sdn. Bhd.	FCOC 016	24 Nov 09	Trading of sawn timber, manufacture and export of solid wood mouldings, finger-jointed timber and laminated timber
25	Kompleks Perkayuan Kelantan Sdn. Bhd.	FCOC 032	29 Nov 09	Manufacture and sales of sawn timber, solid wood moulding and finger-jointed timber
26	Asia Plywood Company Sdn. Bhd.	FCOC 014	30 Nov 09	Manufacture and export of plywood
27	Pesama Timber Corporation Sdn. Bhd.	FCOC 015	03 Dec 09	Manufacture and export of sawn timber, solid wood moulding (including finger-jointed moulding) and furniture



## APPENDIX I

No.	Company	Certificate Number	Date of Issuance of Certificate	Scope of Certification
28	Vin-Forest Industries Sdn. Bhd.	FCOC 017	03 Dec 09	Manufacture and export of S4S and solid wood moulding
29	Guan Hin Sawmill & Hardware Sdn. Bhd.	FCOC 018	03 Dec 09	Manufacture and sales of sawn timber
30	Kim Teck Lee Timber and Flooring Sdn. Bhd.	FCOC 019	03 Dec 09	Manufacture and export of pre finished solid wood flooring
31	Zedtee Plywood Sdn. Bhd.	FCOC 020	03 Dec 09	Manufacture and export of plywood
32	Linshan hao Plywood (Sarawak) Sdn. Bhd.	FCOC 021	03 Dec 09	Manufacture and export of plywood
33	Forescom Plywood Sdn. Bhd.	FCOC 025	03 Dec 09	Manufacture and export of plywood and veneer
34	Sim Seng Huat Timber Industries Sdn. Bhd.	FCOC 026	03 Dec 09	Trading of sawn timber, manufacture and export of solid wood, finger-jointed and laminated wood moulding
35	Arah Asia Sdn. Bhd.	FCOC 027	03 Dec 09	Manufacture and domestic sales of certified sawn timber
36	Global Wood Products Sdn. Bhd.	SGS-MTCS/ COC-0001	24 Dec 09	Purchasing of MTCS certified sawn timber, processing and sales of MTCS moulding products and customized timber profiles and garden furniture using physical separation method
37	Pan Resources Sdn. Bhd.	SGS-MTCS/ COC-0002	24 Dec 09	Trading of MTCS certified sawn timber sourced from MTCS certified suppliers using physical separation method
38	Jimwood Sdn. Bhd.	SGS-MTCS/ COC-0003	24 Dec 09	Trading of MTCS certified sawn timber sourced from MTCS certified suppliers using physical separation method
39	Jasa Harapan Sdn. Bhd.	SGS-MTCS/ COC-0004	24 Dec 09	Purchasing of MTCS certified sawn timber, manufacturing and sales of MTCS certified S4S timber and moulding products using physical separation method
40	Perkayuan Semhing Sdn. Bhd.	SGS-MTCS/ COC-0005	24 Dec 09	Purchasing of MTCS certified logs, sawmilling and sales of MTCS certified sawn timber using physical separation method

No.	Company	Certificate Number	Date of Issuance of Certificate	Scope of Certification
41	Medan Agresif Sdn. Bhd.	SGS-MTCS/ COC-0006	24 Dec 09	Purchasing of MTCS certified logs, sawmilling and sales of MTCS certified sawn timber using physical separation method
42	Finewood Export Associates Sdn. Bhd.	SGS-MTCS/ COC-0007	24 Dec 09	Trading of MTCS certified sawn timber, sourced from MTCS certified suppliers using physical separation method
43	M-Forest Sdn. Bhd.	SGS-MTCS/ COC-0008	24 Dec 09	Purchasing of MTCS certified sawn timber, mouldings and laminated lumber board, outsourced kiln drying and sales of MTCS sawn timber, mouldings and laminated lumber board using physical separation method
44	Hian Yoon Timber Industries Sdn. Bhd.	SGS-MTCS/ COC-0009	24 Dec 09	Purchasing of MTCS certified logs, processing and sales of MTCS certified sawntimber using physical separation method
45	Costraco Sdn. Bhd.	SGS-MTCS/ COC-0010	24 Dec 09	Purchasing and sales of MTCS certified sawn timber, solid finger-jointed and laminated finger-jointed beam using physical separation method
46	Euro-CGA Sdn. Bhd.	SGS-MTCS/ COC-0011	24 Dec 09	Purchasing of MTCS certified sawn timber, processing and sales of MTCS certified solid and laminated finger-jointed beams using physical separation method
47	Straits Timber Products (Pahang) Sdn. Bhd.	SGS-MTCS/ COC-0012	24 Dec 09	Purchasing of MTCS certified sawn timber, manufacturing (using physical separation method) and sales of MTCS certified moulding products
48	Straits Timber Products Sdn. Bhd.	SGS-MTCS/ COC-0013	24 Dec 09	Purchasing of MTCS certified sawn timber, manufacturing (using physical separation system) and sales of MTCS solid wood moulding products
49	Everdure Timber (M) Sdn. Bhd.	SGS-MTCS/ COC-0014	24 Dec 09	Trading of MTCS certified sawn timber sourced from MTCS certified suppliers (using physical separation method)
50	Poh Huat Furniture Industries (M) Sdn. Bhd.	SGS-MTCS/ COC-0015	24 Dec 09	Purchasing of MTCS certified particleboard, fabricate (using physical separation method) and sales of MTCS certified office furniture products
51	Pekan Sawmill Sdn. Bhd.	SGS-MTCS/ COC-0016	24 Dec 09	Purchasing of MTCS certified logs, sawmilling (using physical separation method) and sales of MTCS certified sawn timber
52	Perak Industrial Corporation Sdn. Bhd.	SGS-MTCS/ COC-0017	24 Dec 09	Purchase of MTCS certified logs, sawmilling (using physical separation method) and sales of MTCS certified sawn timber

## APPENDIX I

No.	Company	Certificate Number	Date of Issuance of Certificate	Scope of Certification
53	Maran Road Sawmill Sdn. Bhd.	SGS-MTCS/COC-0019	24 Dec 09	Purchasing of certified logs and sawntimber, sawmilling, manufacturing using physical separation system and sales of certified logs, sawntimber, moulded timber and laminated finger joint products
54	Kim Ban Huat Sdn. Bhd.	SGS-MTCS/COC-0020	24 Dec 09	Purchasing of certified logs, processing using physical separation method and sales of MTCS certified sawntimber
55	Lionex (M) Sdn. Bhd.	SGS-MTCS/COC-0021	24 Dec 09	Trading of MTCS certified sawn timber and moulding products (using physical separation method) sourced from MTCS certified suppliers
56	Mahawangsa Timber Industries Sdn. Bhd.	SGS-MTCS/COC-0024	24 Dec 09	Purchase of MTCS certified logs, sawmilling (using physical separation method) and sales of MTCS certified sawn timber
57	Lionvest Timber Industries Sdn. Bhd.	SGS-MTCS/COC-0025	24 Dec 09	Purchase of MTCS certified logs, sawmilling (using physical separation method) and sales of MTCS certified sawn timber
58	Standard Wood Products Sdn. Bhd.	SGS-MTCS/COC-0026	24 Dec 09	Purchase of certified sawntimber, manufacture and sales of moulding products and furniture components using physical separation system
59	Southern Asia Timber Sdn. Bhd.	SGS-MTCS/COC-0030	24 Dec 09	Purchase and sales of MTCS certified sawn timber using physical separation method.
60	Blue Star Sawmill Sdn. Bhd.	SGS-MTCS/COC-0036	24 Dec 09	Purchase of certified logs, processing using physical separation method and sales of MTCS certified sawntimber and moulded timber
61	Mentakab Sawmill Sdn. Bhd.	SGS-MTCS/COC-0040	24 Dec 09	Purchase of MTCS certified logs, sawmilling (using physical separation method) and sales of MTCS certified sawn timber
62	Wood Village Industries Sdn. Bhd.	SGS-MTCS/COC-0041	24 Dec 09	Purchase of certified sawn timber, manufacturing using physical separation method system and sales of MTCS certified finger jointed, laminated finger jointed timber, furniture components, moulding products and indoor and outdoor furniture products
63	Chye Hin Sawmill Sdn. Bhd.	SGS-MTCS/COC-0052	24 Dec 09	Purchase of MTCS certified logs, sawmilling (using physical separation method) and sales of MTCS certified sawn timber
64	Jerteh Timber Enterprise Sdn. Bhd.	SGS-MTCS/COC-0044	24 Dec 09	Purchase of certified logs, processing using physical separation method and sales of MTCS certified sawntimber and sawmill waste
65	Chin Ho Sawmill (M) Sdn. Bhd.	SGS-MTCS/COC-0091	24 Dec 09	Purchasing of MTCS logs, sawmilling and sales of MTCS certified sawn timber using physical separation method

No.	Company	Certificate Number	Date of Issuance of Certificate	Scope of Certification
66	Evershine Timber Trading Sdn. Bhd.	SGS-MTCS/ COC-0092	30 Dec 09	Purchase of MTCS certified sawn timber, processing and sales of MTCS certified sawn timber and moulding products using physical separation method
67	Arif Jasa Industries Sdn. Bhd.	SGS-MTCS/ COC-0031	4 Jan 10	Purchase of MTCS certified logs, sawmilling (using physical separation method) and sales of MTCS certified sawn timber
68	Hup Lim Enterprises Sdn. Bhd.	SGS-MTCS/ COC-0093	4 Jan 10	Purchase of MTCS certified sawn timber, manufacturing (using physical separation method) and sales of MTCS certified sawn timber
69	Mediarex Sdn. Bhd.	SGS-MTCS/ COC-0094	11 Jan 10	Purchase of MTCS log, sawn timber, sawmilling and manufacturing using physical separation method and sales of MTCS certified sawn timber, solid and finger-jointed laminated timber, S4S and moulding products
70	Eco Lumber Sdn. Bhd.	SGS-MTCS/ COC-0028	15 Jan 10	Trading of MTCS certified sawn timber sourced from MTCS certified suppliers (using physical separation method)
71	Timber Traders (Selangor) Sdn. Bhd.	FCOC 033	18 Jan 10	Manufacture and sales of sawn timber
72	Sanyan Wood Industries Sdn. Bhd.	FCOC 034	18 Jan 10	Manufacture and export of plywood
73	Victory Enterprise Sdn. Bhd.	SGS-MTCS/ COC-0029	21 Jan 10	Purchase of MTCS certified sawn timber, manufacturing (using transfer system) and sales of MTCS certified sawn timber, finger jointed laminated core lumber, S4S (solid wood) and moulding products
74	Syarikat Kayu-Kayan Baoli Sdn. Bhd.	SGS-MTCS/ COC-0039	2 Feb 10	Purchase of MTCS certified logs, sawmilling (using physical separation method) and sales of MTCS certified sawn timber
75	Reliance Wood Industries Sdn. Bhd.	SGS-MTCS/ COC-0096	08 Feb 10	Purchase of MTCS certified sawn timber, manufacturing (using physical separation method) and sales of MTCS certified moulding products
76	Song Sim Sawmill Sdn. Bhd.	SGS-MTCS/ COC-0097	08 Feb 10	Purchase of MTCS certified logs, sawmilling and sales of MTCS certified sawn timber using physical separation method
77	Best Maxim Sdn. Bhd.	SGS-MTCS/ COC-0098	08 Feb 10	Trading of MTCS certified sawn timber, plywood, particle board and veneer sheets sourced from MTCS certified suppliers (using physical separation method)
78	United Trading & Sawmill Sdn. Bhd.	SGS-MTCS/ COC-0037	10 Feb 10	Purchase of MTCS certified logs, sawmilling (using physical separation method) and sales of MTCS certified sawn timber



## APPENDIX I

No.	Company	Certificate Number	Date of Issuance of Certificate	Scope of Certification
79	UM Wood Industries Sdn. Bhd.	SGS-MTCS/ COC-0099	11 Feb 10	Purchase of MTCS certified logs, sawmilling and sales of MTCS certified sawn timber using physical separation method
80	Carl Ronnow (M) Sdn. Bhd.	SGS-MTCS/ COC-0048	23 Feb 10	Trading of MTCS certified sawn timber and moulding products sourced from MTCS certified suppliers (using physical separation method).
81	Kilang Papan Wakaf Tapai Sdn. Bhd.	SGS-MTCS/ COC-0022	24 Feb 10	Purchase of MTCS certified logs, sawmilling (using physical separation method) and sales of MTCS certified sawn timber
82	Mascotwood Sdn. Bhd.	SGS-MTCS/ COC-0023	24 Feb 10	Purchase of MTCS certified sawn timber, manufacture (using physical separation method) and sales of MTCS certified moulding and finger jointed laminated products
83	PTC Timber Sdn. Bhd.	T910488	09 Mar 10	Production of sawn timber
84	SNL Woods Sdn. Bhd.	T933288	09 Mar 10	Sawmilling and production of moulding products (laminated woods)
85	Infinite Point Sdn. Bhd.	SGS-MTCS/ COC-0100	09 Mar 10	Purchase of MTCS certified logs, sawmilling and sales of MTCS certified sawn timber and moulding products using physical separation method
86	Boon Hock Sawmill Sdn. Bhd.	SGS-MTCS/ COC-0101	09 Mar 10	Purchase of MTCS certified logs, sawmilling and sales of MTCS certified sawn timber, moulding products, laminated scantling and finger jointed products using physical separation method
87	Suria Dayapi Timber Products Sdn. Bhd.	SGS-MTCS/ COC-0027	16 Mar 10	Trading of MTCS certified sawn timber sources from MTCS certified suppliers using physical separation method
88	Shen Foong Trading Sdn. Bhd.	SGS-MTCS/ COC-0038	18 Mar 10	Purchase of MTCS certified logs, sawmilling (using physical separation method) and sales of MTCS certified sawn timber
89	Evergreen Industries Products Sdn. Bhd.	SGS-MTCS/ COC-0033	22 Mar 10	Purchase of MTCS certified logs, sawmilling (using physical separation method) and sales of MTCS certified sawn timber
90	Permata Upaya Sdn. Bhd.	SGS-MTCS/ COC-0047	25 Mar 10	Purchase of MTCS certified logs and sawntimber, manufacturing using physical separation system and sales of sawntimber, moulding, finger jointed and laminated board.
91	Pio Hardwood (M) Sdn. Bhd.	SGS-MTCS/ COC-0032	29 Mar 10	Trading of MTCS certified sawn timber sourced from MTCS certified suppliers (using physical separation method)
92	GL Wan Enterprise Sdn. Bhd.	T833888	01 Apr 10	Production of sawn timber

No.	Company	Certificate Number	Date of Issuance of Certificate	Scope of Certification
93	Legend Wood Sdn. Bhd.	SGS-MTCS/COC-0045	19 Apr 10	Purchase of MTCS certified logs, sawmilling (using physical separation method) and sales of MTCS certified sawn timber
94	GMI Enterprise Sdn. Bhd.	SGS-MTCS/COC-0046	19 Apr 10	Purchase of MTCS logs, manufacturing and sales of MTCS sawn timber and using physical separation method.
95	MIECO Manufacturing Sdn. Bhd.	SGS-MTCS/COC-0042	26 Apr 10	Purchase of MTCS certified logs, slabs, off cuts, woodchips, shaving and sawdust, manufacturing (using volume credit method), lamination (using percentage method) and sales of MTCS certified particle board, laminated board & furniture parts
96	Mahakota Sdn. Bhd.	FCOC 035	26 Apr 10	Manufacture and export of solid wooden doors and components and solid wooden furniture
97	Kilang Papan Seong Eng Sdn. Bhd.	SGS-MTCS/COC-0049	28 Apr 10	Purchase of certified logs, processing using physical separation method and sales of MTCS certified sawn timber
98	Leong Seng Sawmill Sdn. Bhd.	SGS-MTCS/COC-0050	29 Apr 10	Purchase of certified logs, sawmilling (using physical separation method) and sales of MTCS certified sawn timber
99	Ting Tinh Resources Sdn. Bhd.	FCOC 036	03 May 10	Trading of sawn timber
100	Bortim Sdn. Bhd.	SGS-MTCS/COC-0060	4 May 10	Trading of MTCS certified sawn timber sourced from certified suppliers (using physical separation method)
101	Mentakab Veneer & Plywood Sdn. Bhd.	SGS-MTCS/COC-0058	5 May 10	Purchase of MTCS certified logs, manufacture (using physical separation method) and sales of MTCS certified plywood
102	Timbertech Wood Industries Sdn. Bhd.	SGS-MTCS/COC-0083	5 May 10	Purchase of MTCS sawntimber, manufacturing and sales of MTCS sawntimber and moulding products using physical separation method
103	Stanwoods Corporation Sdn. Bhd.	SGS-MTCS/COC-0106	06 May 10	Purchase of MTCS certified logs, sawmilling using physical separation method and sales of MTCS certified sawntimber
104	Kilang Papan Teoh Chong Seng Sdn. Bhd.	FCOC 037	24 May 10	Manufacture and sale of sawn timber
105	Tan Chin Huat & Brothers Sdn. Bhd.	SGS-MTCS/COC-0061	25 May 10	Purchase of MTCS logs, manufacturing and sales of MTCS certified sawn timber, finger jointed and moulding products using physical separation method.
106	TSL Timber Sdn. Bhd.	SGS-MTCS/COC-0062	26 May 10	Purchase of MTCS logs, sawmilling and sales of MTCS certified sawn timber using physical separation method

## APPENDIX I

No.	Company	Certificate Number	Date of Issuance of Certificate	Scope of Certification
107	Daiken Sarawak Sdn. Bhd.	FCOC 038	31 May 10	Manufacture and export of medium density fibreboard (mdf)
108	Cairnfield Sdn. Bhd.	FCOC 039	31 May 10	Manufacture and export of plywood
109	Top Forest Wood Sdn. Bhd.	SGS-MTCS/ COC-0108	01 Jun 10	Purchase of MTCS certified sawn timber, kilning and sales of MTCS certified sawn timber
110	Salak Soon Lee Sawmill Sdn. Bhd.	SGS-MTCS/ COC-0072	2 Jun 10	Purchase of MTCS certified logs, manufacturing and sales of MTCS certified sawn timber using physical separation method
111	Papanjaya Sdn. Bhd.	SGS-MTCS/ COC-0067	3 Jun 10	Purchase of MTCS certified logs, sawmilling (using physical separation method) and sales of MTCS certified sawn timber
112	Supreme Fame Sdn. Bhd.	SGS-MTCS/ COC-0053	7 Jun 10	Trading of MTCS certified sawn timber sourced from MTCS certified suppliers using physical separation method
113	E.P.W. Sdn. Bhd.	SGS-MTCS/ COC-0064	7 Jun 10	Trading of MTCS certified sawn timber sourced from MTCS certified suppliers using physical separation method
114	GT Plywood Industries Sdn. Bhd.	FCOC 040	07 Jun 10	Manufacture and export of plywood
115	I Maskayu Door Export (M) Sdn. Bhd.	FCOC 041	07 Jun 10	Manufacture and export of wooden door, skin, door frame and architraves (door frame)
116	Winfast Industrial Holdings Sdn. Bhd.	SGS-MTCS/ COC-0107	10 Jun 10	Purchase of MTCS certified logs, sawmilling using physical separation method and sales of MTCS certified sawntimber
117	True Acclaim Sdn. Bhd.	SGS-MTCS/ COC-0065	11 Jun 10	Trading of MTCS certified sawn timber sourced from MTCS certified suppliers (using physical separation method)
118	Indah Wood Products Sdn. Bhd.	SGS-MTCS/ COC-0071	14 Jun 10	Purchase and sales of MTCS certified sawn timber and moulding products using physical separation method.
119	Hills Wood Processing Plants Sdn. Bhd.	SGS-MTCS/ COC-0055	21 Jun 10	Purchase of MTCS certified sawn timber, manufacture (using physical separation method) and sales of MTCS certified sawn timber and moulding products
120	P.I.F. Sdn. Bhd.	SGS-MTCS/ COC-0056	21 Jun 10	Trading of MTCS certified sawn timber and moulding products sourced from MTCS certified suppliers (using physical separation method).
121	B.K.B. Hevea Products Sdn. Bhd.	SGS-MTCS/ COC-0085	23 Jun 10	Purchase of MTCS certified sawn timber, veneer sheets and plywood, manufacture (using percentage based method) and sales of MTCS certified three-layered engineered wood parquet

No.	Company	Certificate Number	Date of Issuance of Certificate	Scope of Certification
122	Asrama Raya Sdn. Bhd.	SGS-MTCS/ COC-0035	24 Jun 10	Purchase of certified logs, processing using physical separation method and sales of MTCS certified sawntimber and sawmill waste
123	Sen Hai Timber Sdn. Bhd.	SGS-MTCS/ COC-0109	25 Jun 10	Purchase of MTCS and PEFC certified logs, sawmilling using physical separation method and sales of MTCS and PEFC certified sawn timber
124	Golden Pharos Doors Sdn. Bhd.	SGS-MTCS/ COC-0069	28 Jun 10	Purchase of MTCS certified sawn timber, finger jointed timber, manufacture (using physical separation method) and sales of MTCS certified doors and door frames
125	Jejaka Timber Industries Sdn. Bhd.	SGS-MTCS/ COC-0070	29 Jun 10	Purchase of MTCS logs, sawmilling (using physical separation method) and sales of MTCS certified sawn timber
126	Hang Tuah Furniture Sdn. Bhd.	SGS-MTCS/ COC-0063	30 Jun 10	Purchase of MTCS certified sawn timber, manufacture (using physical separation method) and sales of MTCS certified garden furniture and moulding products
127	Shua Lym Woodworks Sdn. Bhd.	SGS-MTCS/ COC-0077	30 Jun 10	Purchase of MTCS logs, sawmilling and sales of MTCS certified sawn timber using physical separation method
128	Hok Lai Timber (M) Sdn. Bhd.	SGS-MTCS/ COC-0068	5 Jul 10	Purchase of MTCS certified logs, sawmilling (using physical separation method) and sales of MTCS certified sawn timber
129	Strategi Mutiara Manufacturing Berhad	SGS-MTCS/ COC-0074	5 Jul 10	Purchase of MTCS certified logs and sawntimber, sawmilling, production (using physical separation method) and sales of sawntimber, moulding products, garden furniture and furniture components
130	Ah Hai Industries Sdn. Bhd.	FCOC 042	16 Jul 10	Provision of kiln drying treatment, manufacture of sliced veneer, manufacture and export of solid wood, mouldings, finger-jointed and laminated timber products, solid wooden door and door frames, interior wood profiles and solid wood furniture
131	Vanace Sdn. Bhd.	SGS-MTCS/ COC-0078	19 Jul 10	Purchase of MTCS certified sawn timber, plywood and veneer sheets, manufacture (using physical separation method) and sales of MTCS certified S4S, doors and garden gates
132	Rosewood Corporation Sdn. Bhd.	SGS-MTCS/ COC-0089	19 Jul 10	Trading of MTCS certified sawn timber sourced from MTCS certified supplier using physical separation method
133	Keow Seng Sawmill Sdn. Bhd.	SGS-MTCS/ COC-0076	20 Jul 10	Purchase of MTCS logs, sawmilling and sales of MTCS certified sawn timber using physical separation method
134	MSK Timber Sdn. Bhd.	SGS-MTCS/ COC-0073	21 Jul 10	Purchase of MTCS certified logs, manufacturing and sales of MTCS certified sawn timber using physical separation method



## APPENDIX I

No.	Company	Certificate Number	Date of Issuance of Certificate	Scope of Certification
135	Seng Peng Sawmills Sdn. Bhd.	SGS-MTCS/ COC-0059	22 Jul 10	Purchase of MTCS certified logs, sawmilling (using physical separation method) and sales of MTCS certified sawn timber
136	Sun Sheng Ni Sdn. Bhd.	SGS-MTCS/ COC-0075	22 Jul 10	Purchase of MTCS certified logs, sawmilling (using physical separation method) and sales of MTCS certified sawn timber
137	Pesaka Terengganu Berhad	SGS-MTCS/ COC-0090	27 Jul 10	Purchase of MTCS certified logs, sawmilling using physical separation method and sales of MTCS certified sawntimber and sawmill waste
138	Kilang Papan Bukit Emas Sdn. Bhd.	SGS-MTCS/ COC-0080	4 Aug 10	Purchase of MTCS certified logs, sawmilling (using physical separation method) and sales of MTCS certified sawn timber
139	Perkayuan Fong Shum Sdn. Bhd.	SGS-MTCS/ COC-0086	5 Aug 10	Purchase of MTCS logs, sawmilling and sales of MTCS certified sawn timber using physical separation method
140	Kilang Papan Matang Makmur Sdn. Bhd.	SGS-MTCS/ COC-0084	9 Aug 10	Purchase of MTCS logs, sawmilling and sales of MTCS certified sawn timber using physical separation method
141	Welly Timber Industries Sdn. Bhd.	SGS-MTCS/ COC-0110	17 Aug 10	Purchase of MTCS certified logs, manufacturing and sales of MTCS certified plywood using physical separation method
142	Lee Wah Sawmill Sdn. Bhd.	SGS-MTCS/ COC-0088	18 Aug 10	Purchase of MTCS certified logs, sawn timber, sawmilling and manufacture (using physical separation method) and sales of MTCS certified sawn timber and moulding products
143	Solid Lumber Sdn. Bhd.	SGS-MTCS/ COC-0079	23 Aug 10	Trading of MTCS certified sawn timber, sourced from MTCS certified suppliers using physical separation method
144	Kelang Papan Eng Hong Guan Sdn. Bhd.	SGS-MTCS/ COC-0082	26 Aug 10	Purchase of MTCS logs, sawmilling and sales of MTCS certified sawn timber using physical separation method
145	Kuching Plywood Berhad	FCOC 043	01 Sep 10	Manufacture and export of plywood
146	Futurewood Products Sdn. Bhd.	SGS-MTCS/ COC-0111	24 Sep 10	Purchase of MTCS certified logs and sawn timber, outsourced sawmilling and processing (using physical separation method) and sales of MTCS certified moulding products
147	ME Industries Sdn. Bhd.	FCOC 044	24 Sep 10	Trading of solid wood flooring, engineered flooring, decking plywood, staircase board, moulding, blockboard and particle board

No.	Company	Certificate Number	Date of Issuance of Certificate	Scope of Certification
148	Taichen Enterprise Sdn. Bhd.	SGS-MTCS/COC-0081	27 Sep 10	Trading of MTCS certified sawn timber sourced from MTCS certified suppliers, using physical separation method
149	Kilang Papan Salamah Sdn. Bhd.	SGS-MTCS/COC-0112	2 Oct 10	Purchase of MTCS certified logs, sawmilling and sales of MTCS certified sawntimber and moulding products using physical separation method
150	Supreme Tropical Furniture Sdn. Bhd.	SGS-MTCS/COC-0113	2 Oct 10	Purchase of certified sawn timber and moulding, manufacturing and sales of garden furniture, doors and garden gates using physical separation method
151	Beyond Powers Sdn. Bhd.	SGS-MTCS/COC-0114	2 Oct 10	Purchase of MTCS certified logs, sawmilling and sales of MTCS certified sawntimber, moulding and finger jointed products using physical separation method
152	Gilbert Hardwood Industries (M) Sdn. Bhd.	SGS-MTCS/COC-0115	2 Oct 10	Purchase of MTCS certified sawntimber and S4S, manufacturing and sales of MTCS certified flooring and moulding products using physical separation method
153	Perkayuan C. H. Sdn. Bhd.	FCOC 045	08 Oct 10	Trading (buying and exporting) of sawn timber and solid wood mouldings
154	Roundtree Timber Sdn. Bhd.	FCOC 046	15 Oct 10	Manufacture, sale and export of sawn timber, garden stakes, decking, finger-jointed timber, laminated beams, lattice products and plywood
155	K.T.S. Sdn. Bhd.	SGS-MTCS/COC-0116	18 Oct 10	Purchase of MTCS certified sawntimber, processing and sales of MTCS certified sawntimber and moulding product using physical separation method
156	Leung Huat Timber Industries (M) Sdn. Bhd.	T868288	23 Oct 10	Production of sawn timber and moulding products
157	Bormill Wood (TRG) Sdn. Bhd.	T890988	23 Oct 10	Production of sawn timber and moulding products
158	Trentim Wood Sdn. Bhd.	T846488	23 Oct 10	Trading of sawn timber and moulded timber products
159	Syarikat Malaysia Wood Industries Sdn. Bhd.	FCOC 047	12 Nov 10	Manufacture and export of 3-ply engineered wood
160	D & R Lumber Sdn. Bhd.	SGS-MTCS/COC-0117	28 Dec 10	Purchase of MTCS/PEFC certified sawntimber, outsourced kiln drying and manufacturing and sales of MTCS/PEFC sawn timber and moulding products using physical separation system

## APPENDIX II

### MTCC Logo Usage Licence Holders

No.	Company	Certificate Number	MTCC Logo Usage Licence No.
1	Pan Resources Sdn. Bhd.	SGS-MTCS/COC-0002	MTCC/31-001
2	M-Forest Sdn. Bhd.	SGS-MTCS/COC-0008	MTCC/31-002
3	Jimwood Sdn. Bhd.	SGS-MTCS/COC-0003	MTCC/31-003
4	Finewood Export Associates Sdn. Bhd.	SGS-MTCS/COC-0007	MTCC/31-004
5	Global Wood Products Sdn. Bhd.	SGS-MTCS/COC-0001	MTCC/31-005
6	Straits Timber Products (Pahang) Sdn. Bhd.	SGS-MTCS/COC-0012	MTCC/31-006
7	Straits Timber Products Sdn. Bhd.	SGS-MTCS/COC-0013	MTCC/31-007
8	Costraco Sdn. Bhd.	SGS-MTCS/COC-0010	MTCC/31-008
9	Euro-CGA Sdn. Bhd.	SGS-MTCS/COC-0011	MTCC/31-009
10	Maran Road Sawmill Sdn. Bhd.	SGS-MTCS/COC-0019	MTCC/31-010
11	Pekan Sawmill Sdn. Bhd.	SGS-MTCS/COC-0016	MTCC/31-011
12	Hian Yoon Timber Industries Sdn. Bhd.	SGS-MTCS/COC-0009	MTCC/31-012
13	Jasa Harapan Sdn. Bhd.	SGS-MTCS/COC-0004	MTCC/31-014
14	Perkayuan Semhing Sdn. Bhd.	SGS-MTCS/COC-0005	MTCC/31-015
15	Poh Huat Furniture Industries (M) Sdn. Bhd.	SGS-MTCS/COC-0015	MTCC/31-016
16	Suria Dayapi Timber Products Sdn. Bhd.	SGS-MTCS/COC-0027	MTCC/31-017
17	Yee Poh Timber Sdn. Bhd.	FCOC 005	MTCC/31-018
18	Besgrade Products Sdn. Bhd.	FCOC 004	MTCC/31-019
19	Victory Enterprise Sdn. Bhd.	SGS-MTCS/COC-0029	MTCC/31-020
20	Perak Industrial Corporation Sdn. Bhd.	SGS-MTCS/COC-0017	MTCC/31-021
21	Lionex (M) Sdn. Bhd.	SGS-MTCS/COC-0021	MTCC/31-022
22	Southern Asia Timber Sdn. Bhd.	SGS-MTCS/COC-0030	MTCC/31-023
23	Arif Jasa Industries Sdn. Bhd.	SGS-MTCS/COC-0031	MTCC/31-024
24	Lengkap Arif Sdn. Bhd.	FCOC 003	MTCC/31-025
25	Euro Asia Timber Export Sdn. Bhd.	FCOC 007	MTCC/31-026
26	Standard Wood Products Sdn. Bhd.	SGS-MTCS/COC-0026	MTCC/31-027
27	Magna-Foremost Sdn. Bhd.	FCOC 002	MTCC/31-028
28	Mentakab Sawmill Sdn. Bhd.	SGS-MTCS/COC-0040	MTCC/31-029
29	Pio Hardwood (M) Sdn. Bhd.	SGS-MTCS/COC-0032	MTCC/31-030
30	Kilang Papan Datuk Wan Ahmad (Raub) Sdn. Bhd.	FCOC 009	MTCC/31-031
31	Blue Star Sawmill Sdn. Bhd.	SGS-MTCS/COC-0036	MTCC/31-032
32	Mahawangsa Timber Industries Sdn. Bhd.	SGS-MTCS/COC-0024	MTCC/31-034
33	Kilang Papan Seong Eng Sdn. Bhd.	SGS-MTCS/COC-0049	MTCC/31-035

No.	Company	Certificate Number	MTCC Logo Usage Licence No.
34	Asrama Raya Sdn. Bhd.	SGS-MTCS/COC-0035	MTCC/31-036
35	Medan Agresif Sdn. Bhd.	SGS-MTCS/COC-0006	MTCC/31-037
36	Samling Plywood (Baramas) Sdn. Bhd.	FCOC 008	MTCC/31-038
37	Kim Ban Huat Sdn. Bhd.	SGS-MTCS/COC-0020	MTCC/31-039
38	Supreme Fame Sdn. Bhd.	SGS-MTCS/COC-0053	MTCC/31-040
39	Eco Lumber Sdn. Bhd.	SGS-MTCS/COC-0028	MTCC/31-041
40	Carl Ronnow (M) Sdn. Bhd.	SGS-MTCS/COC-0048	MTCC/31-042
41	Evergreen Industries Products Sdn. Bhd.	SGS-MTCS/COC-0033	MTCC/31-043
42	Maju Weko Timber Industries Sdn. Bhd.	FCOC 010	MTCC/31-044
43	Wood Village Industries Sdn. Bhd.	SGS-MTCS/COC-0041	MTCC/31-045
44	Syarikat Kayu-Kayan Baoli Sdn. Bhd.	SGS-MTCS/COC-0039	MTCC/31-046
45	United Trading & Sawmill Sdn. Bhd.	SGS-MTCS/COC-0037	MTCC/31-047
46	P.I.F. Sdn. Bhd.	SGS-MTCS/COC-0056	MTCC/31-049
47	Asia Plywood Company Sdn. Bhd.	FCOC 014	MTCC/31-050
48	Mentakab Veneer & Plywood Sdn. Bhd.	SGS-MTCS/COC-0058	MTCC/31-051
49	Komill Corporation Sdn. Bhd.	FCOC 013	MTCC/31-053
50	TSL Timber Sdn. Bhd.	SGS-MTCS/COC-0062	MTCC/31-054
51	Hok Lai Timber (M) Sdn. Bhd.	SGS-MTCS/COC-0068	MTCC/31-055
52	True Acclaim Sdn. Bhd.	SGS-MTCS/COC-0065	MTCC/31-056
53	Golden Latitude Sdn. Bhd.	FCOC 011	MTCC/31-057
54	Hills Wood Processing Plants Sdn. Bhd.	SGS-MTCS/COC-0055	MTCC/31-058
55	Golden Pharos Doors Sdn. Bhd.	SGS-MTCS/COC-0069	MTCC/31-059
56	Tan Chin Huat & Brothers Sdn. Bhd.	SGS-MTCS/COC-0061	MTCC/31-060
57	Shen Foong Trading Sdn. Bhd.	SGS-MTCS/COC-0038	MTCC/31-061
58	Papanjaya Sdn. Bhd.	SGS-MTCS/COC-0067	MTCC/31-062
59	Ah Hai Industries Sdn. Bhd.	T842088	MTCC/31-063
60	Shua Lym Woodworks Sdn. Bhd.	SGS-MTCS/COC-0077	MTCC/31-064
61	Bortim Sdn. Bhd.	SGS-MTCS/COC-0060	MTCC/31-065
62	PTC Timber Sdn. Bhd.	T910488	MTCC/31-066
63	Jejaka Timber Industries Sdn. Bhd.	SGS-MTCS/COC-0070	MTCC/31-067
64	Keow Seng Sawmill Sdn. Bhd.	SGS-MTCS/COC-0076	MTCC/31-068
65	Timbertech Wood Industries Sdn. Bhd.	SGS-MTCS/COC-0083	MTCC/31-069
66	E.P.W. Sdn. Bhd.	SGS-MTCS/COC-0064	MTCC/31-070
67	Taichen Enterprise Sdn. Bhd.	SGS-MTCS/COC-0081	MTCC/31-071



## APPENDIX II

No.	Company	Certificate Number	MTCC Logo Usage Licence No.
68	Gunung Seraya Wood Products Sdn. Bhd.	FCOC 016	MTCC/31-072
69	Dyera - Tim Sdn. Bhd.	FCOC 028	MTCC/31-074
70	Firmwood Sdn. Bhd.	FCOC 012	MTCC/31-075
71	Solid Lumber Sdn. Bhd.	SGS-MTCS/COC-0079	MTCC/31-076
72	Linshanhao Plywood (Sarawak) Sdn. Bhd.	FCOC 021	MTCC/31-077
73	Kilang Papan Low Fat Sdn. Bhd.	FCOC 022	MTCC/31-078
74	Low Fatt Wood Industries Sdn. Bhd.	FCOC 023	MTCC/31-079
75	MTME Point Sdn. Bhd.	FCOC 030	MTCC/31-080
76	Beaumont Forest Products Ltd.	CATG-MTCS-0003	MTCC/31-081
77	Timber Link International Ltd.	CATG-MTCS-0004	MTCC/31-082
78	Vin-Forest Industries Sdn. Bhd.	FCOC 017	MTCC/31-083
79	Timber Traders (Selangor) Sdn. Bhd.	FCOC 033	MTCC/31-084
80	Kompleks Perkayuan Kelantan Sdn. Bhd.	FCOC 032	MTCC/31-085
81	UM Wood Industries Sdn. Bhd.	SGS-MTCS/COC-0099	MTCC/31-086
82	Hup Lim Enterprises Sdn. Bhd.	SGS-MTCS/COC-0093	MTCC/31-087
83	Mediarex Sdn. Bhd.	SGS-MTCS/COC-0094	MTCC/31-089
84	Sanyan Wood Industries Sdn. Bhd.	FCOC 034	MTCC/31-090
85	Legend Wood Sdn. Bhd.	SGS-MTCS/COC-0045	MTCC/31-092
86	Daiken Sarawak Sdn. Bhd.	FCOC 038	MTCC/31-093
87	Murdock Builders Merchants Ltd.	CATG-MTCS-0006	MTCC/31-094
88	Winfast Industrial Holdings Sdn. Bhd.	SGS-MTCS/COC-0107	MTCC/31-095
89	Stanwoods Corporation Sdn. Bhd.	SGS-MTCS/COC-0106	MTCC/31-096
90	Hang Tuah Furniture Sdn. Bhd.	SGS-MTCS/COC-0063	MTCC/31-098
91	Strategi Mutiara Manufacturing Berhad	SGS-MTCS/COC-0074	MTCC/31-099
92	Mahakota Sdn. Bhd.	FCOC 035	MTCC/31-100
93	SNL Woods Sdn. Bhd.	T933288	MTCC/31-101
94	ME Industries Sdn. Bhd.	FCOC 044	MTCC-31-102
95	Perkayuan C. H. Sdn. Bhd.	FCOC 045	MTCC/31-104
96	B.K.B. Hevea Products Sdn. Bhd.	SGS-MTCS/COC-0085	MTCC/31-105
97	Sim Seng Huat Timber Industries Sdn. Bhd.	FCOC 026	MTCC/31-106
98	D & R Lumber Sdn. Bhd.	SGS-MTCS/COC-0117	MTCC/31-107
99	Kilang Papan Salamah Sdn. Bhd.	SGS-MTCS/COC-0112	MTCC/31-108
100	MIECO Manufacturing Sdn. Bhd.	SGS-MTCS/COC-0042	MTCC/32-001
101	Roundtree Timber Sdn. Bhd.	FCOC 046	MTCC/32-002
102	KTS Plantation Sdn. Bhd.	FMC 001	MTCC/21-001

## PEFC Logo Usage Licence Holders

No.	Company	Certificate Number	PEFC Logo Usage Licence No.
1	Ta Ann Plywood Sdn. Bhd.	CEF0606A	PEFC/01-31-20
2	Times Offset (Malaysia) Sdn. Bhd.	SGS-PEFC/COC-0593	PEFC/01-31-94
3	Antalis (Malaysia) Sdn. Bhd.	SGS-PEFC/COC-0566	PEFC/01-31-99
4	KTS Plantation Sdn. Bhd.	FMC 001	PEFC/34-23-001
5	Pan Resources Sdn. Bhd.	SGS-MTCS/COC-0002	PEFC/34-31-001
6	Finewood Export Associates Sdn. Bhd.	SGS-MTCS/COC-0007	PEFC/34-31-004
7	Straits Timber Products (Pahang) Sdn. Bhd.	SGS-MTCS/COC-0012	PEFC/34-31-006
8	Straits Timber Products Sdn. Bhd.	SGS-MTCS/COC-0013	PEFC/34-31-007
9	Costraco Sdn. Bhd.	SGS-MTCS/COC-0010	PEFC/34-31-008
10	Euro-CGA Sdn. Bhd.	SGS-MTCS/COC-0011	PEFC/34-31-009
11	Maran Road Sawmill Sdn. Bhd.	SGS-MTCS/COC-0019	PEFC/34-31-010
12	Yee Poh Timber Sdn. Bhd.	FCOC 005	PEFC/34-31-018
13	Besgrade Products Sdn. Bhd.	FCOC 004	PEFC/34-31-019
14	Victory Enterprise Sdn. Bhd.	SGS-MTCS/COC-0029	PEFC/34-31-020
15	Lionex (M) Sdn. Bhd.	SGS-MTCS/COC-0021	PEFC/34-31-022
16	Southern Asia Timber Sdn. Bhd.	SGS-MTCS/COC-0030	PEFC/34-31-023
17	Standard Wood Products Sdn. Bhd.	SGS-MTCS/COC-0026	PEFC/34-31-027
18	Mentakab Sawmill Sdn. Bhd.	SGS-MTCS/COC-0040	PEFC/34-31-029
19	Kilang Papan Seong Eng Sdn. Bhd.	SGS-MTCS/COC-0049	PEFC/34-31-035
20	Asrama Raya Sdn. Bhd.	SGS-MTCS/COC-0035	PEFC/34-31-036
21	Samling Plywood (Baramas) Sdn. Bhd.	FCOC 008	PEFC/34-31-038
22	Kim Ban Huat Sdn. Bhd.	SGS-MTCS/COC-0020	PEFC/34-31-039
23	Eco Lumber Sdn. Bhd.	SGS-MTCS/COC-0028	PEFC/34-31-041
24	Maju Weko Timber Industries Sdn. Bhd.	FCOC 010	PEFC/34-31-044
25	Wood Village Industries Sdn. Bhd.	SGS-MTCS/COC-0041	PEFC/34-31-045
26	Asia Plywood Company Sdn. Bhd.	FCOC 014	PEFC/34-31-050
27	Mentakab Veneer & Plywood Sdn. Bhd.	SGS-MTCS/COC-0058	PEFC/34-31-051
28	TSL Timber Sdn. Bhd.	SGS-MTCS/COC-0062	PEFC/34-31-054

## APPENDIX III

No.	Company	Certificate Number	PEFC Logo Usage Licence No.
29	Golden Latitude Sdn. Bhd.	FCOC 011	PEFC/34-31-057
30	Indah Wood Products Sdn. Bhd.	SGS-MTCS/COC-0071	PEFC/34-31-060
31	Ah Hai Industries Sdn. Bhd.	FCOC 042	PEFC/34-31-063
32	Bortim Sdn. Bhd.	SGS-MTCS/COC-0060	PEFC/34-31-065
33	Keow Seng Sawmill Sdn. Bhd.	SGS-MTCS/COC-0076	PEFC/34-31-068
34	Timbertech Wood Industries Sdn. Bhd.	SGS-MTCS/COC-0083	PEFC/34-31-069
35	Dyera - Tim Sdn. Bhd.	FCOC 028	PEFC/34-31-074
36	Kilang Papan Low Fat Sdn. Bhd.	FCOC 022	PEFC/34-31-078
37	Low Fatt Wood Industries Sdn. Bhd.	FCOC 023	PEFC/34-31-079
38	Vin-Forest Industries Sdn. Bhd.	FCOC 017	PEFC/34-31-083
39	UM Wood Industries Sdn. Bhd.	SGS-MTCS/COC-0099	PEFC/34-31-086
40	Tandem Holdings Sdn. Bhd.	FCOC 006	PEFC/34-31-088
41	Sanyan Wood Industries Sdn. Bhd.	FCOC 034	PEFC/34-31-090
42	Shin Yang Plywood (Bintulu) Sdn. Bhd.	FCOC 029	PEFC/34-31-091
43	Legend Wood Sdn. Bhd.	SGS-MTCS/COC-0045	PEFC/34-31-092
44	Daiken Sarawak Sdn. Bhd.	FCOC 038	PEFC/34-31-093
45	Kim Teck Lee Timber and Flooring Sdn. Bhd.	FCOC 019	PEFC/34-31-097
46	Hang Tuah Furniture Sdn. Bhd.	SGS-MTCS/COC-0063	PEFC/34-31-098
47	Strategi Mutiara Manufacturing Berhad	SGS-MTCS/COC-0074	PEFC/34-31-099
48	Mahakota Sdn. Bhd.	FCOC 035	PEFC/34-31-100
49	SNL Woods Sdn. Bhd.	T933288	PEFC/34-31-101
50	ME Industries Sdn. Bhd.	FCOC 044	PEFC/34-31-102
51	Supreme Tropical Furniture Sdn. Bhd.	SGS-MTCS/COC-0113	PEFC/34-31-103
52	Perkayuan C. H. Sdn. Bhd.	FCOC 045	PEFC/34-31-104
53	Mieco Manufacturing Sdn. Bhd.	SGS-MTCS/COC-0042	PEFC/34-32-001
54	Roundtree Timber Sdn. Bhd.	FCOC 046	PEFC/34-32-002
55	SIRIM QAS International Sdn. Bhd.	Not Applicable	PEFC/34-44-01
56	SGS (Malaysia) Sdn. Bhd.	Not Applicable	PEFC/34-44-02
57	Moody International Certification (Malaysia) Sdn. Bhd.	Not Applicable	PEFC/34-44-03



**MALAYSIAN TIMBER CERTIFICATION COUNCIL**

C-08-05, Block C, Megan Avenue II,  
No. 12, Jalan Yap Kwan Seng,  
50450 Kuala Lumpur, Malaysia.

Tel : 603-2161 2298  
Fax : 603-2161 2293

E-mail : [info@mtcc.com.my](mailto:info@mtcc.com.my)  
Website : [www.mtcc.com.my](http://www.mtcc.com.my)